


Product datasheet

Anti-CTF/NFIA antibody ab104967

画像数 1

製品の概要

製品名	Anti-CTF/NFIA antibody
製品の詳細	Rabbit polyclonal to CTF/NFIA
由来種	Rabbit
アプリケーション	適用あり: WB
種交差性	交差種: Human 交差が予測される動物種: Mouse, Rat, Rabbit, Horse, Chicken, Guinea pig, Cow, Cat, Dog, Zebrafish 
免疫原	Synthetic peptide corresponding to a region within internal sequence amino acids 348-397 (QHHRPVITGP RASPHATPST LHFPTSPIIQ QPGPYFSHPA IRYHPQETLK) of Human NFIA (NP_005586). Run BLAST with ExPASy Run BLAST with NCBI
ポジティブ・コントロール	Jukat cell lysate

製品の特性

製品の状態	Liquid
保存方法	Shipped at 4°C. Upon delivery aliquot and store at -20°C. Avoid repeated freeze / thaw cycles.
バッファー	Preservative: 0.09% Sodium azide Constituents: 2% Sucrose, PBS
精製度	Immunogen affinity purified
ポリ/モノ	ポリクローナル
アイソタイプ	IgG

アプリケーション

Our [Abpromise guarantee](#) covers the use of **ab104967** in the following tested applications.

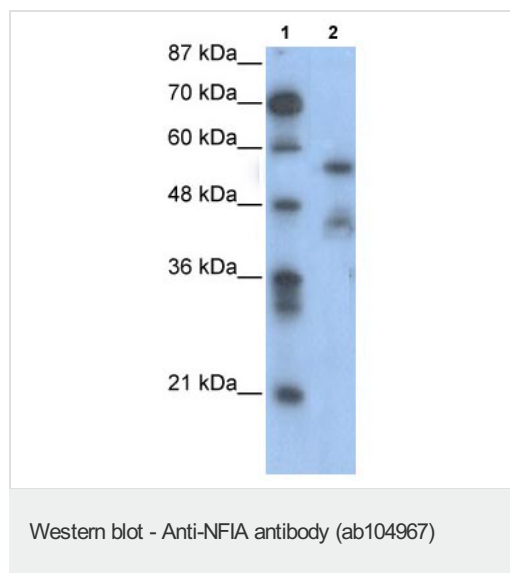
The application notes include recommended starting dilutions; optimal dilutions/concentrations should be determined by the end user.

アプリケーション	Abreviews	特記事項
WB		Use a concentration of 2 µg/ml. Predicted molecular weight: 56 kDa. Good results were obtained when blocked with 5% non-fat dry milk in 0.05% PBS-T.

ターゲット情報

機能	Recognizes and binds the palindromic sequence 5'-TTGGCNNNNNGCCAA-3' present in viral and cellular promoters and in the origin of replication of adenovirus type 2. These proteins are individually capable of activating transcription and replication.
配列類似性	Belongs to the CTF/NF-I family. Contains 1 CTF/NF-I DNA-binding domain.
細胞内局在	Nucleus.

画像



All lanes : Anti-CTF/NFIA antibody (ab104967) at 2 µg/ml

Lane 1 : Molecular weight markers

Lane 2 : Jurkat cell lysate at 10 µg

Predicted band size: 56 kDa

Gel concentration: 12%

Please note: All products are "FOR RESEARCH USE ONLY AND ARE NOT INTENDED FOR DIAGNOSTIC OR THERAPEUTIC USE"

Our Abpromise to you: Quality guaranteed and expert technical support

- Replacement or refund for products not performing as stated on the datasheet
- Valid for 12 months from date of delivery
- Response to your inquiry within 24 hours
- We provide support in Chinese, English, French, German, Japanese and Spanish
- Extensive multi-media technical resources to help you
- We investigate all quality concerns to ensure our products perform to the highest standards

If the product does not perform as described on this datasheet, we will offer a refund or replacement. For full details of the Abpromise, please visit <https://www.abcam.co.jp/abpromise> or contact our technical team.

Terms and conditions

- Guarantee only valid for products bought direct from Abcam or one of our authorized distributors