


## Product datasheet

# Anti-NEK4 antibody ab95176

画像数 3

### 製品の概要

製品名	Anti-NEK4 antibody
製品の詳細	Rabbit polyclonal to NEK4
由来種	Rabbit
アプリケーション	適用あり: WB, IP, IHC-P
種交差性	交差種: Human 交差が予測される動物種: Rhesus monkey, Gorilla, Orangutan 
免疫原	Recombinant fragment, corresponding to a region within amino acids 475-525 of human NEK4 (NP_003148.2)
ポジティブ・コントロール	HeLa cell lysate

### 製品の特性

製品の状態	Liquid
保存方法	Shipped at 4°C. Upon delivery aliquot and store at -20°C. Avoid freeze / thaw cycles.
バッファー	Preservative: 0.09% Sodium Azide Constituents: 0.1% BSA, Tris buffered saline
精製度	Immunogen affinity purified
特記事項(精製)	ab95176 was affinity purified using an epitope specific to NEK4 immobilized on solid support. Antibody concentration was determined by extinction coefficient: absorbance at 280 nm of 1.4 equals 1.0 mg of IgG.
ポリ/モノ	ポリクローナル
アイソタイプ	IgG

### アプリケーション

Our [Abpromise guarantee](#) covers the use of **ab95176** in the following tested applications.

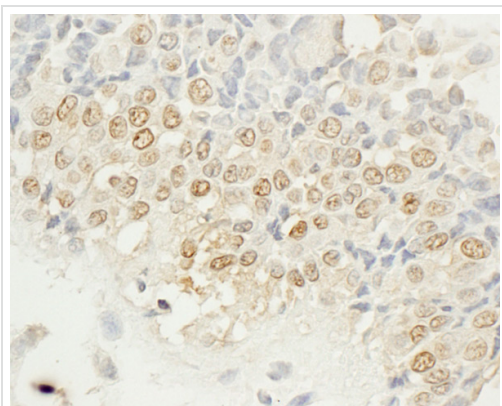
The application notes include recommended starting dilutions; optimal dilutions/concentrations should be determined by the end user.

アプリケーション	Abreviews	特記事項
WB		1/2000 - 1/10000. Predicted molecular weight: 95 kDa.
IP		Use at 2-5 µg/mg of lysate.
IHC-P		1/100 - 1/500. Perform heat mediated antigen retrieval with citrate buffer pH 6 before commencing with IHC staining protocol.

## ターゲット情報

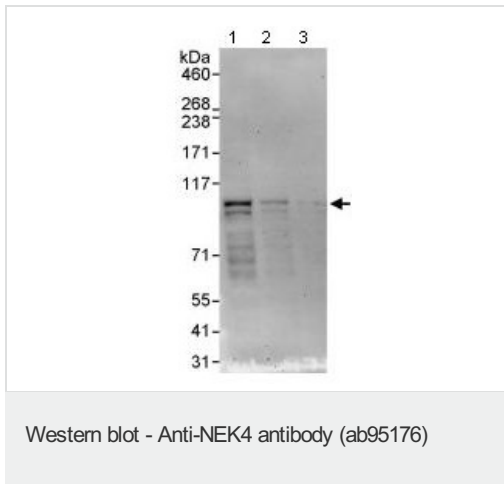
関連性	NEK4 (NIMA related kinase 4) is a serine/threonine protein kinase related to the aspergillus NIMA (never in mitosis gene a) kinase. NEK4 is proposed to play a role in cell division. Highest expression in adult heart, followed by pancreas, skeletal muscle, brain, liver, kidney, lung and placenta. Present in most primary carcinomas. There are two named isoforms produced by alternative splicing.
細胞内局在	Nuclear

## 画像



Immunohistochemistry (Formalin/PFA-fixed paraffin-embedded sections) analysis of human breast carcinoma tissue labelling NEK4 with ab95176 at 1/200 (1 µg/ml).  
Detection: DAB.

Immunohistochemistry (Formalin/PFA-fixed paraffin-embedded sections) - Anti-NEK4 antibody (ab95176)



**All lanes :** Anti-NEK4 antibody (ab95176) at 0.04 µg/ml

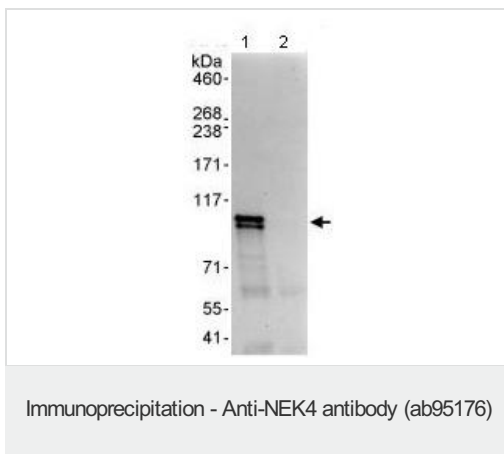
**Lane 1 :** HeLa cell lysate at 50 µg/ml

**Lane 2 :** HeLa cell lysate at 15 µg/ml

**Lane 3 :** HeLa cell lysate at 5 µg/ml

**Predicted band size:** 95 kDa

Detection: Chemiluminescence with exposure times of 3 minutes.



Immunoprecipitation of NEK4 from HeLa cell lysate (1mg) using ab95176 at 3µg/mg lysate , followed by Western blotting of 20% of the immunoprecipitate: (1) ab95176 at 1 µg/ml, (2) control IgG

Detection: Chemiluminescence with exposure times of 30 seconds.

**All lanes :** Anti-NEK4 antibody (ab95176) at 0.04 µg/ml

**Lane 1 :** IP: Anti-NEK4

**Lane 2 :** IP: ab95176

**Lane 3 :** IP: control IgG

**Please note:** All products are "FOR RESEARCH USE ONLY AND ARE NOT INTENDED FOR DIAGNOSTIC OR THERAPEUTIC USE"

### Our Abpromise to you: Quality guaranteed and expert technical support

- Replacement or refund for products not performing as stated on the datasheet
- Valid for 12 months from date of delivery
- Response to your inquiry within 24 hours
- We provide support in Chinese, English, French, German, Japanese and Spanish
- Extensive multi-media technical resources to help you
- We investigate all quality concerns to ensure our products perform to the highest standards

If the product does not perform as described on this datasheet, we will offer a refund or replacement. For full details of the Abpromise, please visit <https://www.abcam.co.jp/abpromise> or contact our technical team.

## Terms and conditions

---

- Guarantee only valid for products bought direct from Abcam or one of our authorized distributors