

Product datasheet

Anti-NDUFB6 antibody [21C11BC11] ab110244

20 References [画像数 2](#)

製品の概要

製品名	Anti-NDUFB6 antibody [21C11BC11]
製品の詳細	Mouse monoclonal [21C11BC11] to NDUFB6
由来種	Mouse
アプリケーション	適用あり: Flow Cyt, WB
種交差性	交差種: Mouse, Rat, Cow, Human
免疫原	NDUFB6 from cow
ポジティブ・コントロール	Isolated mitochondria from Human heart, bovine heart, rat heart and mouse heart.
特記事項	<p>This antibody clone is manufactured by Abcam.</p> <p>Product was previously marketed under the MitoSciences sub-brand.</p> <p>If you require this antibody in a particular buffer formulation or a particular conjugate for your experiments, please contact orders@abcam.com or you can find further information here.</p>

製品の特性

製品の状態	Liquid
保存方法	Shipped at 4°C. Store at +4°C. Do Not Freeze.
バッファー	Preservative: 0.02% Sodium azide Constituent: HEPES buffered saline
特記事項(精製)	Near homogeneity as judged by SDS-PAGE. The antibody was produced in vitro using hybridomas grown in serum-free medium, and then purified by biochemical fractionation.
ポリ/モノ	モノクローナル
クローン名	21C11BC11
アイソタイプ	IgG2b
軽鎖の種類	kappa

アプリケーション

Our [Abpromise guarantee](#) covers the use of **ab110244** in the following tested applications.

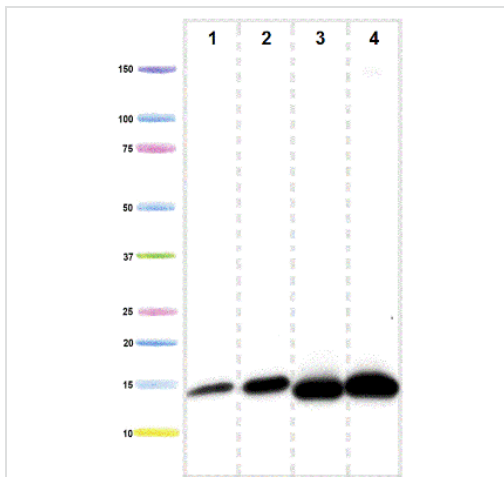
The application notes include recommended starting dilutions; optimal dilutions/concentrations should be determined by the end user.

アプリケーション	Abreviews	特記事項
Flow Cyt		Use 1µg for 10 ⁶ cells. ab170192 - Mouse monoclonal IgG2b, is suitable for use as an isotype control with this antibody.
WB		Use a concentration of 0.5 µg/ml. Predicted molecular weight: 15 kDa.

ターゲット情報

機能	Accessory subunit of the mitochondrial membrane respiratory chain NADH dehydrogenase (Complex I), that is believed not to be involved in catalysis. Complex I functions in the transfer of electrons from NADH to the respiratory chain. The immediate electron acceptor for the enzyme is believed to be ubiquinone.
配列類似性	Belongs to the complex I NDUF6 subunit family.
細胞内局在	Mitochondrion inner membrane.

画像



Western blot - Anti-NDUF6 antibody [21C11BC11] (ab110244)

All lanes : Anti-NDUF6 antibody [21C11BC11] (ab110244) at 0.5 µg/ml

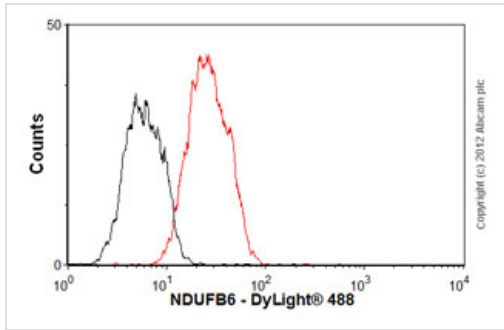
Lane 1 : isolated mitochondria from Human heart at 5 µg

Lane 2 : isolated mitochondria from cow heart at 1 µg

Lane 3 : isolated mitochondria from rat heart at 10 µg

Lane 4 : isolated mitochondria from mouse heart at 10 µg

Predicted band size: 15 kDa



Flow Cytometry - Anti-NDUFB6 antibody
[21C11BC11] (ab110244)

Overlay histogram showing HepG2 cells stained with ab110244 (red line). The cells were fixed with 80% methanol (5 min) and then permeabilized with 0.1% PBS-Tween for 20 min. The cells were then incubated in 1x PBS / 10% normal goat serum / 0.3M glycine to block non-specific protein-protein interactions. The cells were then incubated with the antibody (ab110244, 1 µg/1x10⁶ cells) for 30 min at 22°C. The secondary antibody used was DyLight® 488 goat anti-mouse IgG (H+L) (ab96879) at 1/500 dilution for 30 min at 22°C. Isotype control antibody (black line) was mouse IgG2b [PLPV219] (ab91366, 2 µg/1x10⁶ cells) used under the same conditions. Acquisition of >5,000 events was performed.

Please note: All products are "FOR RESEARCH USE ONLY AND ARE NOT INTENDED FOR DIAGNOSTIC OR THERAPEUTIC USE"

Our Abpromise to you: Quality guaranteed and expert technical support

- Replacement or refund for products not performing as stated on the datasheet
- Valid for 12 months from date of delivery
- Response to your inquiry within 24 hours
- We provide support in Chinese, English, French, German, Japanese and Spanish
- Extensive multi-media technical resources to help you
- We investigate all quality concerns to ensure our products perform to the highest standards

If the product does not perform as described on this datasheet, we will offer a refund or replacement. For full details of the Abpromise, please visit <https://www.abcam.co.jp/abpromise> or contact our technical team.

Terms and conditions

- Guarantee only valid for products bought direct from Abcam or one of our authorized distributors