

Product datasheet

Anti-Macrophage Inflammatory Protein 1 beta antibody ab25129

2 References [画像数 2](#)

製品の概要

製品名	Anti-Macrophage Inflammatory Protein 1 beta antibody
製品の詳細	Rabbit polyclonal to Macrophage Inflammatory Protein 1 beta
由来種	Rabbit
アプリケーション	適用あり: IP, ICC/IF, Neutralising, WB
種交差性	交差種: Mouse, Rat
免疫原	Synthetic peptide: MKLCVSAFSLLLLVA AFCDSVLSAPIGSDPPTSCCF SYTSRKIHRNFVMD YYETSSLCSQPAVVFLTKK , corresponding to N terminal amino acids 1 - 69 of Rat Macrophage Inflammatory Protein 1 beta Run BLAST with Run BLAST with
ポジティブ・コントロール	ICC/IF: Raw264.7 cells.

製品の特性

製品の状態	Liquid
保存方法	Shipped at 4°C. Store at +4°C short term (1-2 weeks). Upon delivery aliquot. Store at -20°C or -80°C. Avoid freeze / thaw cycle.
バッファー	Preservative: 0.1% Sodium Azide Constituents: PBS
精製度	Protein A purified
ポリモノ	ポリクローナル
アイソタイプ	IgG

アプリケーション

Our [Abpromise guarantee](#) covers the use of **ab25129** in the following tested applications.

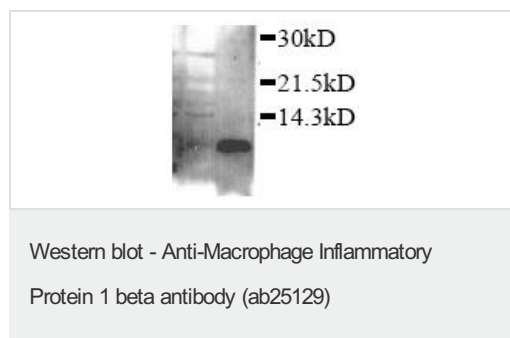
The application notes include recommended starting dilutions; optimal dilutions/concentrations should be determined by the end user.

アプリケーション	Abreviews	特記事項
IP		1/500.
ICC/IF		Use a concentration of 5 µg/ml.
Neutralising		Use at an assay dependent concentration.
WB		1/2000. Predicted molecular weight: 10 kDa.

ターゲット情報

機能	Monokine with inflammatory and chemokinetic properties. Binds to CCR5. One of the major HIV-suppressive factors produced by CD8+ T-cells. Recombinant MIP-1-beta induces a dose-dependent inhibition of different strains of HIV-1, HIV-2, and simian immunodeficiency virus (SIV). The processed form MIP-1-beta(3-69) retains the abilities to induce down-modulation of surface expression of the chemokine receptor CCR5 and to inhibit the CCR5-mediated entry of HIV-1 in T-cells. MIP-1-beta(3-69) is also a ligand for CCR1 and CCR2 isoform B.
配列類似性	Belongs to the intercrine beta (chemokine CC) family.
翻訳後修飾	N-terminal processed form MIP-1-beta(3-69) is produced by proteolytic cleavage after secretion from peripheral blood lymphocytes.
細胞内局在	Secreted.

画像



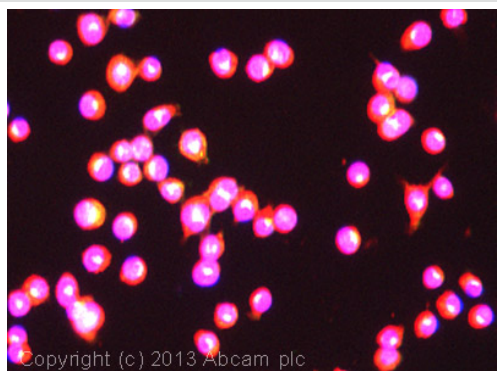
All lanes : Anti-Macrophage Inflammatory Protein 1 beta antibody (ab25129) at 1/2000 dilution

Lane 1 : lysate

Lane 2 : supernatant

Predicted band size: 10 kDa

ab25129 staining by Western Blot in RAW264.7 cells treated with LPS for 15 hours.



Immunocytochemistry/ Immunofluorescence - Anti-Macrophage Inflammatory Protein 1 beta antibody (ab25129)

ICC/IF image of ab25129 stained Raw264.7 cells. The cells were 100% Methanol fixed (5 min) and then incubated in 1%BSA / 10% normal Goat serum / 0.3M glycine in 0.1% PBS-Tween for 1h to permeabilise the cells and block non-specific protein-protein interactions. The cells were then incubated with the antibody (ab25129, 5µg/ml) overnight at +4°C. The secondary antibody (green) was ab96899, DyLight® 488 Goat anti-Rabbit IgG (H+L) used at a 1/250 dilution for 1h. Alexa Fluor® 594 WGA was used to label plasma membranes (red) at a 1/200 dilution for 1h. DAPI was used to stain the cell nuclei (blue) at a concentration of 1.43µM.

Please note: All products are "FOR RESEARCH USE ONLY AND ARE NOT INTENDED FOR DIAGNOSTIC OR THERAPEUTIC USE"

Our Abpromise to you: Quality guaranteed and expert technical support

- Replacement or refund for products not performing as stated on the datasheet
- Valid for 12 months from date of delivery
- Response to your inquiry within 24 hours
- We provide support in Chinese, English, French, German, Japanese and Spanish
- Extensive multi-media technical resources to help you
- We investigate all quality concerns to ensure our products perform to the highest standards

If the product does not perform as described on this datasheet, we will offer a refund or replacement. For full details of the Abpromise, please visit <https://www.abcam.co.jp/abpromise> or contact our technical team.

Terms and conditions

- Guarantee only valid for products bought direct from Abcam or one of our authorized distributors