

Product datasheet

Anti-MID2 antibody ab14749

画像数 2

製品の概要

製品名	Anti-MID2 antibody
製品の詳細	Goat polyclonal to MID2
由来種	Goat
アプリケーション	適用あり: IHC-P, ELISA, WB
種交差性	交差種: Mouse, Human 交差が予測される動物種: Monkey
免疫原	Synthetic peptide: QESPYVSGMKTCH , corresponding to amino acids 703-715 of Human MID2. Run BLAST with Run BLAST with

製品の特性

製品の状態	Liquid
保存方法	Shipped at 4°C. Upon delivery aliquot and store at -20°C or -80°C. Avoid repeated freeze / thaw cycles.
バッファー	Preservative: 0.02% Sodium azide Constituents: Tris buffered saline, 0.5% BSA
精製度	Immunogen affinity purified
特記事項(精製)	Purified from goat serum by ammonium sulphate precipitation followed by antigen affinity chromatography using the immunizing peptide.
ポリ/モノ	ポリクローナル
アイソタイプ	IgG

アプリケーション

Our [Abpromise guarantee](#) covers the use of **ab14749** in the following tested applications.

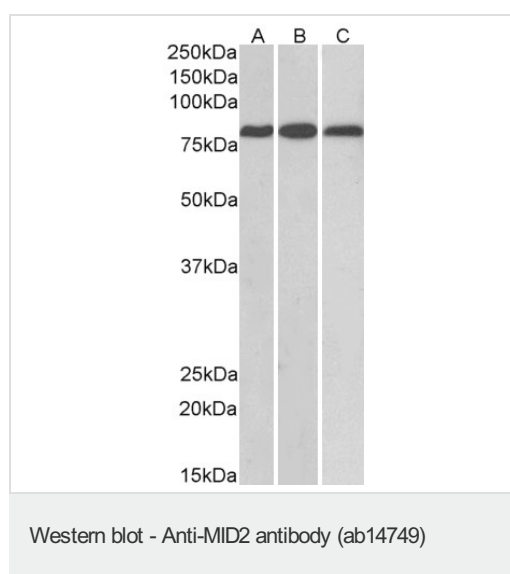
The application notes include recommended starting dilutions; optimal dilutions/concentrations should be determined by the end user.

アプリケーション	Abreviews	特記事項
IHC-P		Use a concentration of 5 - 10 µg/ml.
ELISA		Use at an assay dependent concentration.
WB		Use a concentration of 0.1 - 0.3 µg/ml. Predicted molecular weight: 81 kDa. Can be blocked with Human MID2 peptide (ab23250) . Approx 80-85kDa band observed in Mouse and Rat Heart, and Rat Kidney lysates (calculated MW of 77.8kDa according to Mouse NP_035975.1 and 83.1kDa according to Rat NP_001178818.1).

ターゲット情報

組織特異性	Low level in fetal kidney and lung, and in adult prostate, ovary and small intestine.
パスウェイ	Protein modification; protein ubiquitination.
配列類似性	Belongs to the TRIM/RBCC family. Contains 2 B box-type zinc fingers. Contains 1 B30.2/SPRY domain. Contains 1 COS domain. Contains 1 fibronectin type-III domain. Contains 1 RING-type zinc finger.
ドメイン	The tripartite motif (RBCC; RING- and B box-type zinc fingers and coiled coil domains) mediates dimerization. Associates with microtubules in a manner that is dependent on the C-terminal B30.2 domain.
翻訳後修飾	Phosphorylated on serine and threonine residues.
細胞内局在	Cytoplasm. Cytoplasm > cytoskeleton. Microtubule-associated.

画像



All lanes : Anti-MID2 antibody (ab14749) at 0.1 µg/ml

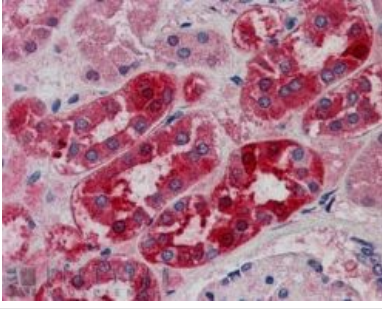
Lane 1 : Mouse heart lysate

Lane 2 : Rat heart lysate

Lane 3 : Rat kidney lysate

Lysates/proteins at 35 µg per lane.

Predicted band size: 81 kDa



ab14749 at 5ug/ml staining MID2 in human kidney tissue section by Immunohistochemistry (Formalin/PFA fixed paraffin-embedded sections). Tissue underwent antigen retrieval in steam with citrate buffer (pH 6.0). The AP-staining procedure was used for detection.

Immunohistochemistry (Formalin/PFA-fixed paraffin-embedded sections) - Anti-MID2 antibody (ab14749)

Please note: All products are "FOR RESEARCH USE ONLY AND ARE NOT INTENDED FOR DIAGNOSTIC OR THERAPEUTIC USE"

Our Abpromise to you: Quality guaranteed and expert technical support

- Replacement or refund for products not performing as stated on the datasheet
- Valid for 12 months from date of delivery
- Response to your inquiry within 24 hours
- We provide support in Chinese, English, French, German, Japanese and Spanish
- Extensive multi-media technical resources to help you
- We investigate all quality concerns to ensure our products perform to the highest standards

If the product does not perform as described on this datasheet, we will offer a refund or replacement. For full details of the Abpromise, please visit <https://www.abcam.co.jp/abpromise> or contact our technical team.

Terms and conditions

- Guarantee only valid for products bought direct from Abcam or one of our authorized distributors