


Product datasheet

Anti-MCP1 antibody ab73680

★★★★☆ 1 Abreviews 3 References 画像数 3

製品の概要

製品名	Anti-MCP1 antibody
製品の詳細	Rabbit polyclonal to MCP1
由来種	Rabbit
アプリケーション	適用あり: WB, IHC-P
種交差性	交差種: Human 交差が予測される動物種: Chimpanzee, Rhesus monkey, Orangutan 
免疫原	Synthetic peptide conjugated to KLH derived from within residues 50 to the C-terminus of Human MCP1. Immunogen の所有権に関して (Peptide available as ab73679 .)
ポジティブ・コントロール	This antibody gave a positive signal in the following Human Whole Cell Lysates: HCT 116, HeLa

製品の特性

製品の状態	Liquid
保存方法	Shipped at 4°C. Store at +4°C short term (1-2 weeks). Upon delivery aliquot. Store at -20°C or -80°C. Avoid freeze / thaw cycle.
バッファー	Preservative: 0.02% Sodium Azide Constituents: 1% BSA, PBS, pH 7.4
精製度	Immunogen affinity purified
ポリ/モノ	ポリクローナル
アイソタイプ	IgG

アプリケーション

Our [Abpromise guarantee](#) covers the use of **ab73680** in the following tested applications.

The application notes include recommended starting dilutions; optimal dilutions/concentrations should be determined by the end user.

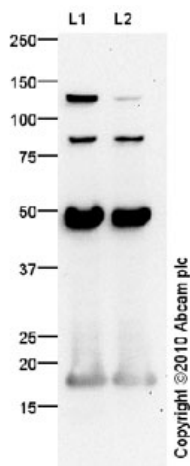
アプリケーション	Abreviews	特記事項
WB		Use a concentration of 1 µg/ml. Detects a band of approximately 17 kDa (predicted molecular weight: 11 kDa).

アプリケーション	Abreviews	特記事項
IHC-P	★★★★☆	Use at an assay dependent concentration.

ターゲット情報

機能	Chemotactic factor that attracts monocytes and basophils but not neutrophils or eosinophils. Augments monocyte anti-tumor activity. Has been implicated in the pathogenesis of diseases characterized by monocytic infiltrates, like psoriasis, rheumatoid arthritis or atherosclerosis. May be involved in the recruitment of monocytes into the arterial wall during the disease process of atherosclerosis.
配列類似性	Belongs to the intercrine beta (chemokine CC) family.
翻訳後修飾	Processing at the N-terminus can regulate receptor and target cell selectivity. Deletion of the N-terminal residue converts it from an activator of basophil to an eosinophil chemoattractant.
細胞内局在	Secreted.

画像



Western blot - Anti-MCP1 antibody (ab73680)

All lanes : Anti-MCP1 antibody (ab73680) at 1 µg/ml

Lane 1 : HeLa (Human epithelial carcinoma cell line) Whole Cell Lysate

Lane 2 : HCT 116 (Human Colorectal Carcinoma) Whole Cell Lysate

Lysates/proteins at 10 µg per lane.

Secondary

All lanes : Goat Anti-Rabbit IgG H&L (HRP) (ab97051) at 1/10000 dilution

Developed using the ECL technique.

Performed under reducing conditions.

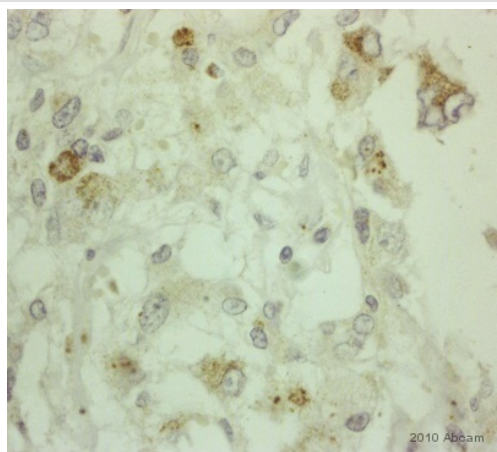
Predicted band size: 11 kDa

Observed band size: 17 kDa

Additional bands at: 125 kDa, 50 kDa

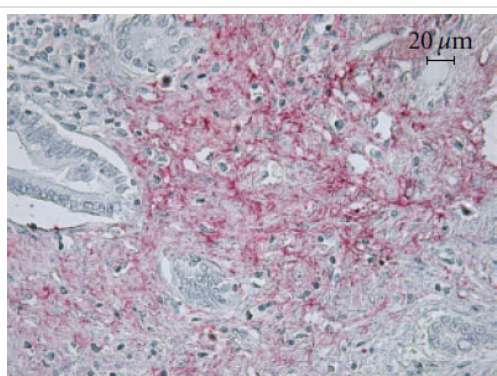
(possible glycosylated form), 80 kDa. We are unsure as to the identity of these extra bands.

The expression profile observed is consistent with what has been described in the literature (e.g. PMID 12957789). We believe the 50kDa band is a glycosylated form of Human MCP1.



ab73680, at a 1/250 dilution, staining human MCP1 in adrenal gland tissue by Immunohistochemistry, Formalin fixed Paraffin embedded tissue.

Immunohistochemistry (Formalin/PFA-fixed paraffin-embedded sections) - Anti-MCP1 antibody (ab73680)



Immunohistochemical analysis of pancreatic ductal adenocarcinoma tissue, staining MCP1 with ab73680.

Antigen retrieval was performed by heat mediation in citrate buffer (pH 6.0). Tissue was blocked with 1% BSA for 10 min. The samples incubated overnight with primary antibody (1/40). Staining was detected using DAB. Sections were counterstained with hematoxylin.

Immunohistochemistry (Formalin/PFA-fixed paraffin-embedded sections) - Anti-MCP1 antibody (ab73680)

Image from Tjomsland V et al., Clin Dev Immunol. 2011;2011:212810. Epub 2011 Dec 6. Fig 3.; doi:10.1155/2011/212810; Clinical and Developmental Immunology, Volume 2011 (2011), Article ID 212810

Please note: All products are "FOR RESEARCH USE ONLY AND ARE NOT INTENDED FOR DIAGNOSTIC OR THERAPEUTIC USE"

Our Abpromise to you: Quality guaranteed and expert technical support

- Replacement or refund for products not performing as stated on the datasheet
- Valid for 12 months from date of delivery
- Response to your inquiry within 24 hours
- We provide support in Chinese, English, French, German, Japanese and Spanish
- Extensive multi-media technical resources to help you
- We investigate all quality concerns to ensure our products perform to the highest standards

If the product does not perform as described on this datasheet, we will offer a refund or replacement. For full details of the Abpromise, please visit <https://www.abcam.co.jp/abpromise> or contact our technical team.

Terms and conditions

- Guarantee only valid for products bought direct from Abcam or one of our authorized distributors