


Product datasheet

Anti-MCHR antibody ab115474

画像数 1

製品の概要

製品名	Anti-MCHR antibody
製品の詳細	Rabbit polyclonal to MCHR
由来種	Rabbit
アプリケーション	適用あり: IHC-P
種交差性	交差種: Human 交差が予測される動物種: Mouse, Rat 
免疫原	Synthetic peptide conjugated to KLH, from the C terminal region of Human MCHR.
ポジティブ・コントロール	Human brain (substantia nigra) tissue.

製品の特性

製品の状態	Liquid
保存方法	Shipped at 4°C. Store at -80°C.
バッファー	Preservative: 0.1% Sodium azide Constituent: 99% PBS
精製度	Protein A purified
ポリ/モノ	ポリクローナル
アイソタイプ	IgG

アプリケーション

Our [Abpromise guarantee](#) covers the use of **ab115474** in the following tested applications.

The application notes include recommended starting dilutions; optimal dilutions/concentrations should be determined by the end user.

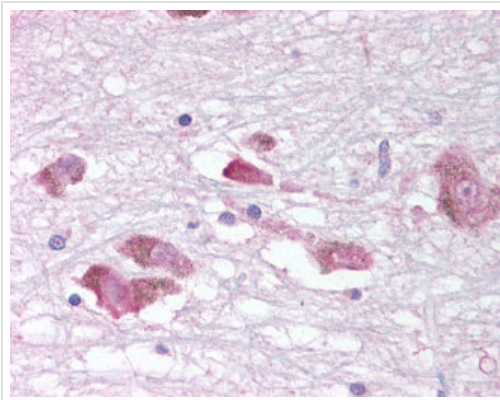
アプリケーション	Abreviews	特記事項
IHC-P		Use a concentration of 10 - 18 µg/ml. Perform heat mediated antigen retrieval with citrate buffer pH 6 before commencing with IHC staining protocol.

ターゲット情報

関連性 MCHR, a member of the G protein coupled receptor family 1, is an integral plasma membrane protein which binds melanin concentrating hormone. MCHR can inhibit cAMP accumulation and stimulate intracellular calcium flux, and is probably involved in the neuronal regulation of food consumption. Although structurally similar to somatostatin receptors, MCHR does not seem to bind somatostatin.

細胞内局在 Cell Membrane; multi-pass membrane protein

画像



ab115474 at 10-18ug/ml staining MCHR in Formalin-fixed, Paraffin-embedded Human brain (substantia nigra) tissue by Immunohistochemistry, followed by biotinylated secondary antibody, alkaline phosphatase-streptavidin and chromogen

Immunohistochemistry (Formalin/PFA-fixed paraffin-embedded sections) - Anti-MCHR antibody (ab115474)

Please note: All products are "FOR RESEARCH USE ONLY AND ARE NOT INTENDED FOR DIAGNOSTIC OR THERAPEUTIC USE"

Our Abpromise to you: Quality guaranteed and expert technical support

- Replacement or refund for products not performing as stated on the datasheet
- Valid for 12 months from date of delivery
- Response to your inquiry within 24 hours
- We provide support in Chinese, English, French, German, Japanese and Spanish
- Extensive multi-media technical resources to help you
- We investigate all quality concerns to ensure our products perform to the highest standards

If the product does not perform as described on this datasheet, we will offer a refund or replacement. For full details of the Abpromise, please visit <https://www.abcam.co.jp/abpromise> or contact our technical team.

Terms and conditions

- Guarantee only valid for products bought direct from Abcam or one of our authorized distributors