

## Product datasheet

# Anti-MARCKS antibody [EP1446Y] ab52616

リコンビナント RabMAb®

10 References 画像数 5

### 製品の概要

<b>製品名</b>	Anti-MARCKS antibody [EP1446Y]
<b>製品の詳細</b>	Rabbit monoclonal [EP1446Y] to MARCKS
<b>由来種</b>	Rabbit
<b>アプリケーション</b>	<b>適用あり:</b> ICC/IF, WB, Flow Cyt, IHC-P <b>適用なし:</b> IP
<b>種交差性</b>	<b>交差種:</b> Human
<b>免疫原</b>	Synthetic peptide within Human MARCKS aa 200-300. The exact sequence is proprietary.
<b>ポジティブ・コントロール</b>	Fetal brain lysate, human brain tissue. This antibody gave a positive result when used in the following formaldehyde fixed cell lines: HeLa.
<b>特記事項</b>	<p>Mouse, Rat: We have preliminary internal testing data to indicate this antibody may not react with these species. Please contact us for more information.</p> <p>Our RabMAb® technology is a patented hybridoma-based technology for making rabbit monoclonal antibodies. For details on our patents, please refer to <a href="#">RabMAb® patents</a></p> <p>This product is a recombinant rabbit monoclonal antibody.</p>

### 製品の特性

<b>製品の状態</b>	Liquid
<b>保存方法</b>	Shipped at 4°C. Upon delivery aliquot and store at -20°C. Avoid freeze / thaw cycles.
<b>バッファー</b>	pH: 7.20 Preservative: 0.05% Sodium azide Constituents: 0.1% BSA, 40% Glycerol, 9.85% Tris glycine, 50% Tissue culture supernatant
<b>精製度</b>	Tissue culture supernatant
<b>ポリ/モノ</b>	モノクローナル
<b>クローン名</b>	EP1446Y
<b>アイソタイプ</b>	IgG

### アプリケーション

Our [Abpromise guarantee](#) covers the use of **ab52616** in the following tested applications.

The application notes include recommended starting dilutions; optimal dilutions/concentrations should be determined by the end user.

アプリケーション	Abreviews	特記事項
ICC/IF		1/100 - 1/250.
WB		1/10000. Predicted molecular weight: 32 kDa.
Flow Cyt		1/10. <a href="#">ab172730</a> - Rabbit monoclonal IgG, is suitable for use as an isotype control with this antibody.
IHC-P		Use at an assay dependent concentration.

**追加情報** Is unsuitable for IP.

### ターゲット情報

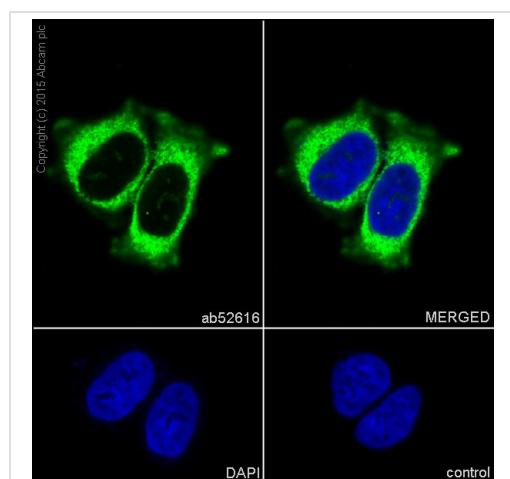
**機能** MARCKS is the most prominent cellular substrate for protein kinase C. This protein binds calmodulin, actin, and synapsin. MARCKS is a filamentous (F) actin cross-linking protein.

**配列類似性** Belongs to the MARCKS family.

**翻訳後修飾** Phosphorylation by PKC displaces MARCKS from the membrane. It also inhibits the F-actin cross-linking activity.

**細胞内局在** Cytoplasm > cytoskeleton. Membrane.

### 画像

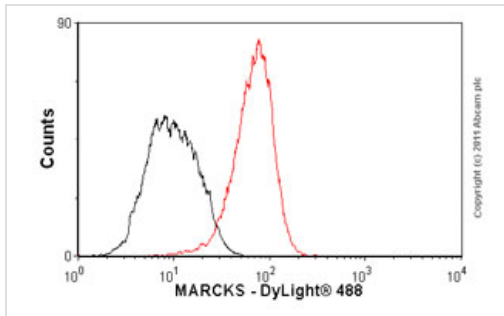


ab52616 staining MARCKS in HeLa (human cervix adenocarcinoma) cells by ICC/IF

(Immunocytochemistry/immunofluorescence). Cells were fixed with 100% methanol and incubated with primary antibody at a dilution of 1/500. A goat anti rabbit IgG (Alexa Fluor® 488) ([ab150077](#)) was used as the secondary antibody at a dilution of 1/1000. DAPI was used as a nuclear counterstain.

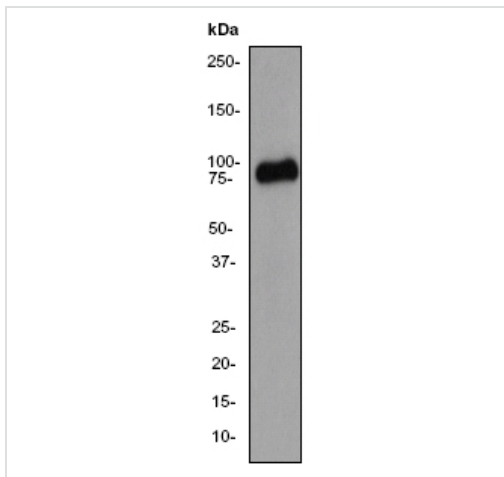
Control: PBS only.

Immunocytochemistry/ Immunofluorescence - Anti-MARCKS antibody [EP1446Y] (ab52616)



Flow Cytometry - Anti-MARCKS antibody  
[EP1446Y] (ab52616)

Overlay histogram showing HeLa cells stained with ab52616 (red line). The cells were fixed with 4% paraformaldehyde (10 min) and then permeabilized with 0.1% PBS-Tween for 20 min. The cells were then incubated in 1x PBS / 10% normal goat serum / 0.3M glycine to block non-specific protein-protein interactions followed by the antibody (ab52616, 1/50 dilution) for 30 min at 22°C. The secondary antibody used was DyLight® 488 goat anti-rabbit IgG (H+L) (ab96899) at 1/500 dilution for 30 min at 22°C. Isotype control antibody (black line) was rabbit IgG (monoclonal) (1 µg/1x10<sup>6</sup> cells) used under the same conditions. Acquisition of >5,000 events was performed. This antibody gave a positive signal in HeLa cells fixed with 80% methanol (5 min)/permeabilized with 0.1% PBS-Tween for 20 min used under the same conditions.



Western blot - Anti-MARCKS antibody [EP1446Y]  
(ab52616)

Anti-MARCKS antibody [EP1446Y] (ab52616) at 1/10000 dilution + Human fetal brain lysate at 10 µg

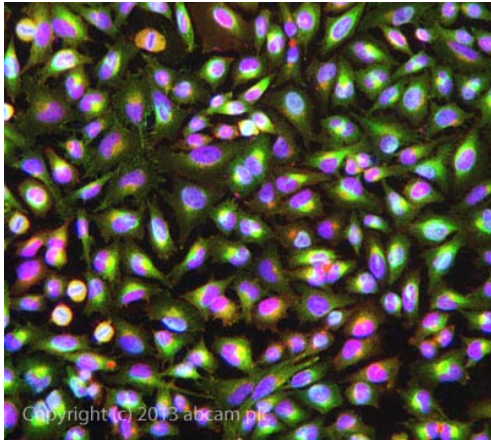
### Secondary

Goat anti-rabbit HRP antibody at 1/2000 dilution

**Predicted band size:** 32 kDa

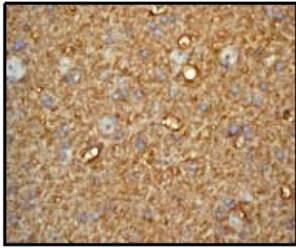
**Observed band size:** 87 kDa

[why is the actual band size different from the predicted?](#)



Immunocytochemistry/ Immunofluorescence - Anti-MARCKS antibody [EP1446Y] (ab52616)

ICC/IF image of ab52616 stained HeLa cells. The cells were 4% formaldehyde fixed (10 min) and then incubated in 1%BSA / 10% normal goat serum / 0.3M glycine in 0.1% PBS-Tween for 1h to permeabilise the cells and block non-specific protein-protein interactions. The cells were then incubated with the antibody ab52616 at 1/200 dilution overnight at +4°C. The secondary antibody (green) was DyLight® 488 goat anti- rabbit (ab96899) IgG (H+L) used at a 1/250 dilution for 1h. Alexa Fluor® 594 WGA was used to label plasma membranes (red) at a 1/200 dilution for 1h. DAPI was used to stain the cell nuclei (blue) at a concentration of 1.43µM.



Immunohistochemistry (Formalin/PFA-fixed paraffin-embedded sections) - Anti-MARCKS antibody [EP1446Y] (ab52616)

Ab52616 at 1/100 dilution staining human brain tissue; paraffin embedded.

**Please note:** All products are "FOR RESEARCH USE ONLY AND ARE NOT INTENDED FOR DIAGNOSTIC OR THERAPEUTIC USE"

### Our Abpromise to you: Quality guaranteed and expert technical support

- Replacement or refund for products not performing as stated on the datasheet
- Valid for 12 months from date of delivery
- Response to your inquiry within 24 hours
- We provide support in Chinese, English, French, German, Japanese and Spanish
- Extensive multi-media technical resources to help you
- We investigate all quality concerns to ensure our products perform to the highest standards

If the product does not perform as described on this datasheet, we will offer a refund or replacement. For full details of the Abpromise, please visit <https://www.abcam.co.jp/abpromise> or contact our technical team.

### Terms and conditions

- Guarantee only valid for products bought direct from Abcam or one of our authorized distributors