

Product datasheet

Anti-MALT1 antibody [EPR604] ab109724

リコンビナント **RabMAb**

画像数 1

製品の概要

製品名	Anti-MALT1 antibody [EPR604]
製品の詳細	Rabbit monoclonal [EPR604] to MALT1
由来種	Rabbit
アプリケーション	適用あり: WB, ICC 適用なし: Flow Cyt, IHC-P or IP
種交差性	交差種: Human
免疫原	Synthetic peptide within Human MALT1 aa 800-900. The exact sequence is proprietary.
ポジティブ・コントロール	Jurkat, K562, bone marrow, and PBMC lysates
特記事項	Mouse, Rat: We have preliminary internal testing data to indicate this antibody may not react with these species. Please contact us for more information.

Our RabMAb[®] technology is a patented hybridoma-based technology for making rabbit monoclonal antibodies. For details on our patents, please refer to [RabMAb[®] patents](#)

This product is a recombinant rabbit monoclonal antibody.

製品の特性

製品の状態	Liquid
保存方法	Shipped at 4°C. Upon delivery aliquot and store at -20°C. Avoid freeze / thaw cycles.
バッファー	pH: 7.20 Preservative: 0.05% Sodium azide Constituents: 0.1% BSA, 40% Glycerol, 9.85% Tris glycine, 50% Tissue culture supernatant
精製度	Tissue culture supernatant
ポリ/モノ	モノクローナル
クローン名	EPR604
アイソタイプ	IgG

アプリケーション

Our [Abpromise guarantee](#) covers the use of **ab109724** in the following tested applications.

The application notes include recommended starting dilutions; optimal dilutions/concentrations should be determined by the end user.

アプリケーション	Abreviews	特記事項
WB		1/1000 - 1/10000. Predicted molecular weight: 92 kDa.
ICC		1/250 - 1/500.

追加情報 Is unsuitable for Flow Cyt, IHC-P or IP.

ターゲット情報

機能 Enhances BCL10-induced activation of NF-kappa-B. Involved in nuclear export of BCL10. Binds to TRAF6, inducing TRAF6 oligomerization and activation of its ligase activity. Has ubiquitin ligase activity. MALT1-dependent BCL10 cleavage plays an important role in T-cell antigen receptor-induced integrin adhesion.

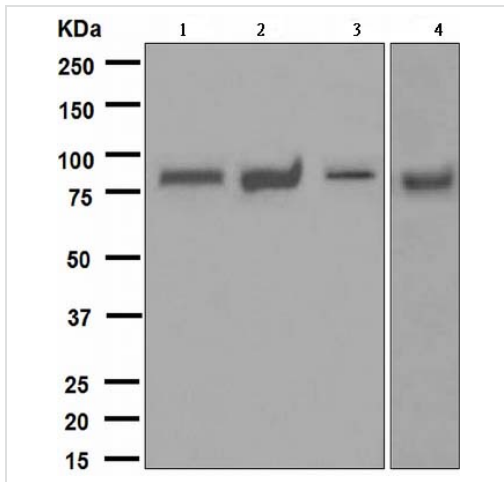
組織特異性 Highly expressed in peripheral blood mononuclear cells. Detected at lower levels in bone marrow, thymus and lymph node, and at very low levels in colon and lung.

関連疾患 Note=A chromosomal aberration involving MALT1 is recurrent in low-grade mucosa-associated lymphoid tissue (MALT lymphoma). Translocation t(11;18)(q21;q21) with BIRC2. This translocation is found in approximately 50% of cytogenetically abnormal low-grade MALT lymphoma.

配列類似性 Belongs to the peptidase C14B family.
Contains 1 death domain.
Contains 2 Ig-like C2-type (immunoglobulin-like) domains.

細胞内局在 Cytoplasm > perinuclear region. Nucleus. Shuttles between the nucleus and cytoplasm. Found in perinuclear structures together with BCL10.

画像



Western blot - Anti-MALT1 antibody [EPR604]
(ab109724)

All lanes : Anti-MALT1 antibody [EPR604]
(ab109724) at 1/1000 dilution

Lane 1 : Jurkat lysate

Lane 2 : K562 lysate

Lane 3 : Bone marrow lysate

Lane 4 : PBMC lysates

Lysates/proteins at 10 µg per lane.

Secondary

All lanes : Standard HRP labelled goat anti-rabbit at 1/2000 dilution

Predicted band size: 92 kDa

Please note: All products are "FOR RESEARCH USE ONLY AND ARE NOT INTENDED FOR DIAGNOSTIC OR THERAPEUTIC USE"

Our Abpromise to you: Quality guaranteed and expert technical support

- Replacement or refund for products not performing as stated on the datasheet
- Valid for 12 months from date of delivery
- Response to your inquiry within 24 hours
- We provide support in Chinese, English, French, German, Japanese and Spanish
- Extensive multi-media technical resources to help you
- We investigate all quality concerns to ensure our products perform to the highest standards

If the product does not perform as described on this datasheet, we will offer a refund or replacement. For full details of the Abpromise, please visit <https://www.abcam.co.jp/abpromise> or contact our technical team.

Terms and conditions

- Guarantee only valid for products bought direct from Abcam or one of our authorized distributors