


Product datasheet

Anti-Laminin beta 1 antibody ab69633

1 References [画像数 3](#)

製品の概要

製品名	Anti-Laminin beta 1 antibody
製品の詳細	Rabbit polyclonal to Laminin beta 1
由来種	Rabbit
アプリケーション	適用あり: WB, ELISA, IHC-P, ICC/IF
種交差性	交差種: Human 交差が予測される動物種: Mouse 
免疫原	Synthesized peptide derived from the C-terminus of human Laminin beta 1.
ポジティブ・コントロール	Hela cells, human liver carcinoma tissue and extracts from HepG2

製品の特性

製品の状態	Liquid
保存方法	Shipped at 4°C. Upon delivery aliquot and store at -20°C. Avoid freeze / thaw cycles.
バッファー	Preservative: 0.02% Sodium Azide Constituents: 50% Glycerol, PBS (without Mg <sup>2+</sup> and Ca <sup>2+</sup> ), 150mM Sodium chloride, pH 7.4
精製度	Immunogen affinity purified
ポリ/モノ	ポリクローナル
アイソタイプ	IgG

アプリケーション

Our [Abpromise guarantee](#) covers the use of **ab69633** in the following tested applications.

The application notes include recommended starting dilutions; optimal dilutions/concentrations should be determined by the end user.

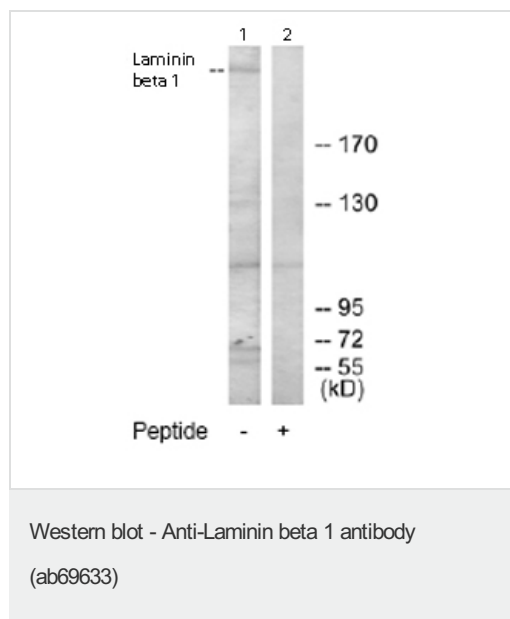
アプリケーション	Abreviews	特記事項
WB		1/500 - 1/1000. Detects a band of approximately 60, 67, 110, 130, >170 kDa (predicted molecular weight: 198 kDa).
ELISA		1/10000.

アプリケーション	Abreviews	特記事項
IHC-P		1/50 - 1/100.
ICC/IF		1/500 - 1/1000.

## ターゲット情報

<b>機能</b>	Binding to cells via a high affinity receptor, laminin is thought to mediate the attachment, migration and organization of cells into tissues during embryonic development by interacting with other extracellular matrix components.
<b>配列類似性</b>	Contains 13 laminin EGF-like domains. Contains 1 laminin IV type B domain. Contains 1 laminin N-terminal domain.
<b>ドメイン</b>	The alpha-helical domains I and II are thought to interact with other laminin chains to form a coiled coil structure. Domains VI and IV are globular.
<b>細胞内局在</b>	Secreted > extracellular space > extracellular matrix > basement membrane. Major component.

## 画像



**All lanes :** Anti-Laminin beta 1 antibody (ab69633) at 1/500 dilution

**Lane 1 :** Extracts from HepG2 cells

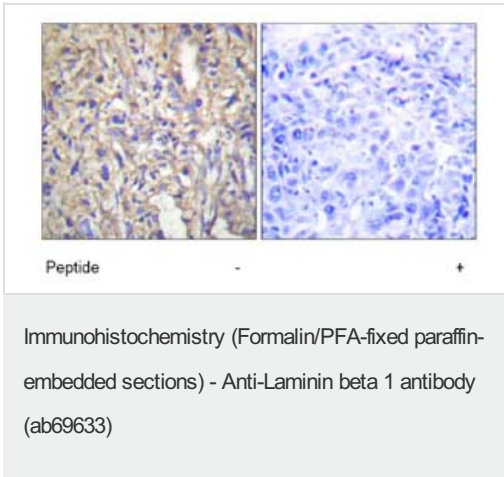
**Lane 2 :** Extracts from HepG2 cells with immunising peptide at 5 µg

Lysates/proteins at 5 µg per lane.

**Predicted band size:** 198 kDa

**Observed band size:** >170 kDa

**Additional bands at:** 110 kDa, 130 kDa, 60 kDa, 67 kDa. We are unsure as to the identity of these extra bands.



Immunohistochemistry analysis of paraffin-embedded human liver carcinoma tissue using ab69633 at 1:50 dilution.  
 Left image un-treated.  
 Right image treated with immunizing peptide.



Immunofluorescence analysis of HeLa cells using ab69633 at a 1:500 dilution.  
 Left image un-treated.  
 Right image treated with immunizing peptide.

**Please note:** All products are "FOR RESEARCH USE ONLY AND ARE NOT INTENDED FOR DIAGNOSTIC OR THERAPEUTIC USE"

**Our Abpromise to you: Quality guaranteed and expert technical support**

- Replacement or refund for products not performing as stated on the datasheet
- Valid for 12 months from date of delivery
- Response to your inquiry within 24 hours
- We provide support in Chinese, English, French, German, Japanese and Spanish
- Extensive multi-media technical resources to help you
- We investigate all quality concerns to ensure our products perform to the highest standards

If the product does not perform as described on this datasheet, we will offer a refund or replacement. For full details of the Abpromise, please visit <https://www.abcam.co.jp/abpromise> or contact our technical team.

**Terms and conditions**

- Guarantee only valid for products bought direct from Abcam or one of our authorized distributors