

Product datasheet

Anti-Laminin beta 1 antibody [EPR3190(2)] ab109293

リコンビナント RabMAb®

画像数 2

製品の概要

製品名	Anti-Laminin beta 1 antibody [EPR3190(2)]
製品の詳細	Rabbit monoclonal [EPR3190(2)] to Laminin beta 1
由来種	Rabbit
アプリケーション	適用あり: WB, Flow Cyt 適用なし: ICC,IHC-P or IP
種交差性	交差種: Mouse, Rat, Human
免疫原	Synthetic peptide within Human Laminin beta 1 aa 1700-1800. The exact sequence is proprietary.
ポジティブ・コントロール	Human fetal kidney and A431 lysates, A431 cells
特記事項	

Our RabMAb® technology is a patented hybridoma-based technology for making rabbit monoclonal antibodies. For details on our patents, please refer to [RabMAb® patents](#)

This product is a recombinant rabbit monoclonal antibody.

製品の特性

製品の状態	Liquid
保存方法	Shipped at 4°C. Store at -20°C. Stable for 12 months at -20°C.
バッファー	pH: 7.20 Preservative: 0.01% Sodium azide Constituents: 9% PBS, 40% Glycerol, 0.05% BSA, 50% Tissue culture supernatant
精製度	Tissue culture supernatant
ポリ/モノ	モノクローナル
クローン名	EPR3190(2)
アイソタイプ	IgG

アプリケーション

Our [Abpromise guarantee](#) covers the use of **ab109293** in the following tested applications.

The application notes include recommended starting dilutions; optimal dilutions/concentrations should be determined by the end user.

アプリケーション	Abreviews	特記事項
WB		1/1000 - 1/10000. Detects a band of approximately 220 kDa (predicted molecular weight: 198 kDa).
Flow Cyt		1/100 - 1/500. ab172730 - Rabbit monoclonal IgG, is suitable for use as an isotype control with this antibody.

追加情報 Is unsuitable for ICC, IHC-P or IP.

ターゲット情報

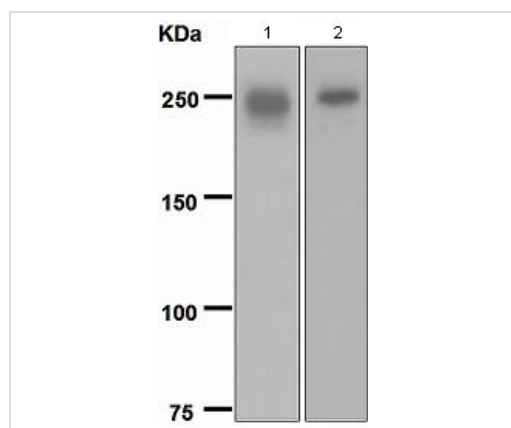
機能 Binding to cells via a high affinity receptor, laminin is thought to mediate the attachment, migration and organization of cells into tissues during embryonic development by interacting with other extracellular matrix components.

配列類似性 Contains 13 laminin EGF-like domains.
Contains 1 laminin IV type B domain.
Contains 1 laminin N-terminal domain.

ドメイン The alpha-helical domains I and II are thought to interact with other laminin chains to form a coiled coil structure.
Domains VI and IV are globular.

細胞内局在 Secreted > extracellular space > extracellular matrix > basement membrane. Major component.

画像



All lanes : Anti-Laminin beta 1 antibody [EPR3190(2)] (ab109293) at 1/1000 dilution

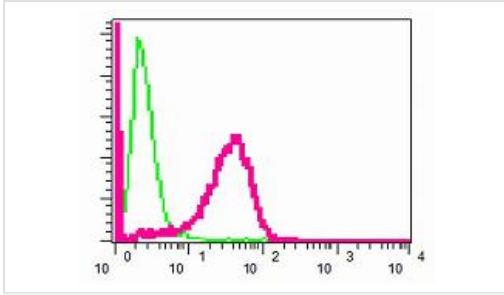
Lane 1 : Human fetal kidney lysate

Lane 2 : A431 lysate

Lysates/proteins at 10 µg per lane.

Predicted band size: 198 kDa

Western blot - Anti-Laminin beta 1 antibody [EPR3190(2)] (ab109293)



Flow cytometric analysis of permeabilized A431 cells using ab109293 (red) at a dilution of 1/100 or a rabbit IgG (negative) (green).

Flow Cytometry - Anti-Laminin beta 1 antibody
[EPR3190(2)] (ab109293)

Please note: All products are "FOR RESEARCH USE ONLY AND ARE NOT INTENDED FOR DIAGNOSTIC OR THERAPEUTIC USE"

Our Abpromise to you: Quality guaranteed and expert technical support

- Replacement or refund for products not performing as stated on the datasheet
- Valid for 12 months from date of delivery
- Response to your inquiry within 24 hours
- We provide support in Chinese, English, French, German, Japanese and Spanish
- Extensive multi-media technical resources to help you
- We investigate all quality concerns to ensure our products perform to the highest standards

If the product does not perform as described on this datasheet, we will offer a refund or replacement. For full details of the Abpromise, please visit <https://www.abcam.co.jp/abpromise> or contact our technical team.

Terms and conditions

- Guarantee only valid for products bought direct from Abcam or one of our authorized distributors