


Product datasheet

Anti-LSM8 antibody ab104676

画像数 1

製品の概要

製品名	Anti-LSM8 antibody
製品の詳細	Rabbit polyclonal to LSM8
由来種	Rabbit
アプリケーション	適用あり: WB
種交差性	交差種: Human 交差が予測される動物種: Mouse, Rat, Rabbit, Horse, Chicken, Guinea pig, Cow, Cat, Dog, Zebrafish 
免疫原	Synthetic peptide corresponding to a region within the N terminal amino acids 1-50 (MTSALENYN RTVAVITSDG RMVGTGKGF DQTINLILDE SHERVFSSSQ) of Human LSM8 (NP_057284) Run BLAST with ExPASy Run BLAST with NCBI
ポジティブ・コントロール	OVCAR-3 cell lysate.

製品の特性

製品の状態	Liquid
保存方法	Shipped at 4°C. Upon delivery aliquot and store at -20°C. Avoid repeated freeze / thaw cycles.
バッファー	Preservative: 0.09% Sodium azide Constituents: 2% Sucrose, PBS
精製度	Immunogen affinity purified
ポリモノ	ポリクローナル
アイソタイプ	IgG

アプリケーション

Our [Abpromise guarantee](#) covers the use of **ab104676** in the following tested applications.

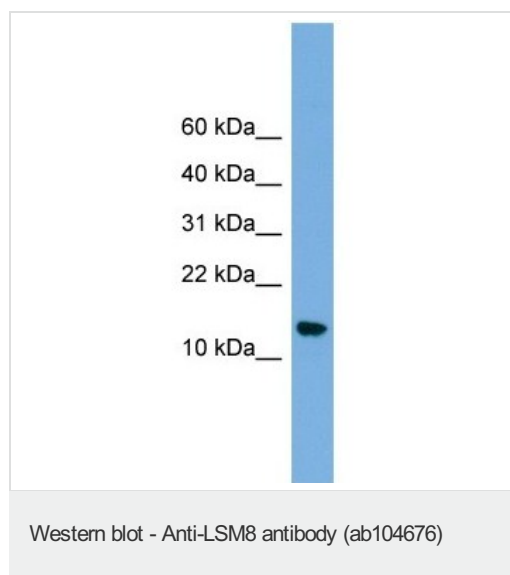
The application notes include recommended starting dilutions; optimal dilutions/concentrations should be determined by the end user.

アプリケーション	Abreviews	特記事項
WB		Use a concentration of 1 µg/ml. Predicted molecular weight: 10 kDa. Good results were obtained when blocked with 5% non-fat dry milk in 0.05% PBS-T.

ターゲット情報

関連性	LSM8 is a member of the LSm family and forms heteroheptameric complex (with Lsm2p, Lsm3p, Lsm4p, Lsm5p, Lsm6p, and Lsm7p) that is part of spliceosomal U6 snRNP. It binds specifically to the 3'-terminal U-tract of U6 snRNA.
細胞内局在	Nuclear

画像



Anti-LSM8 antibody (ab104676) at 1 µg/ml +
OVCAR-3 cell lysate at 10 µg

Predicted band size: 10 kDa

Gel concentration: 10-20%

Please note: All products are "FOR RESEARCH USE ONLY AND ARE NOT INTENDED FOR DIAGNOSTIC OR THERAPEUTIC USE"

Our Abpromise to you: Quality guaranteed and expert technical support

- Replacement or refund for products not performing as stated on the datasheet
- Valid for 12 months from date of delivery
- Response to your inquiry within 24 hours
- We provide support in Chinese, English, French, German, Japanese and Spanish
- Extensive multi-media technical resources to help you
- We investigate all quality concerns to ensure our products perform to the highest standards

If the product does not perform as described on this datasheet, we will offer a refund or replacement. For full details of the Abpromise, please visit <https://www.abcam.co.jp/abpromise> or contact our technical team.

Terms and conditions

- Guarantee only valid for products bought direct from Abcam or one of our authorized distributors