

## Product datasheet

# Anti-LDHA antibody ab92903

★★★★☆ 1 Abreviews [画像数 2](#)

### 製品の概要

製品名	Anti-LDHA antibody
製品の詳細	Mouse polyclonal to LDHA
由来種	Mouse
アプリケーション	適用あり: WB
種交差性	交差種: Human
免疫原	Full length Human LDHA (NP_005557.1)
ポジティブ・コントロール	Human liver tissue lysate, LDHA transfected 293T cell lysate

### 製品の特性

製品の状態	Liquid
保存方法	Shipped at 4°C. Upon delivery aliquot and store at -20°C or -80°C. Avoid repeated freeze / thaw cycles.
バッファー	Preservative: None Constituents: 1X PBS, pH 7.2
精製度	Protein A purified
ポリ/モノ	ポリクローナル
アイソタイプ	IgG

### アプリケーション

Our [Abpromise guarantee](#) covers the use of **ab92903** in the following tested applications.

The application notes include recommended starting dilutions; optimal dilutions/concentrations should be determined by the end user.

アプリケーション	Abreviews	特記事項
WB	★★★★☆	

### 追加情報

WB: 1/500 - 1/1000. Predicted molecular weight: 37 kDa.

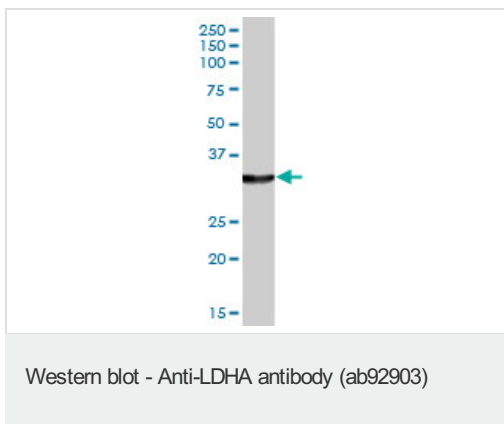
Not yet tested in other applications.

Optimal dilutions/concentrations should be determined by the end user.

## ターゲット情報

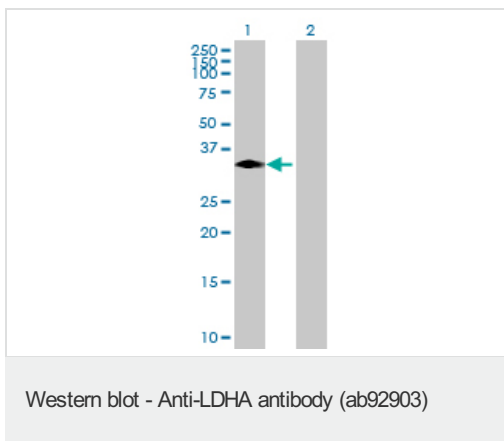
パスウェイ	Fermentation; pyruvate fermentation to lactate; (S)-lactate from pyruvate: step 1/1.
関連疾患	Defects in LDHA are the cause of glycogen storage disease type 11 (GSD11) [MIM:612933]. A metabolic disorder that results in exertional myoglobinuria, pain, cramps and easy fatigue.
配列類似性	Belongs to the LDH/MDH superfamily. LDH family.
翻訳後修飾	ISGylated.
細胞内局在	Cytoplasm.

## 画像



Anti-LDHA antibody (ab92903) at 1/500 dilution + Human liver tissue lysate at 50 µg

**Predicted band size:** 37 kDa



**All lanes :** Anti-LDHA antibody (ab92903) at 1/500 dilution

**Lane 1 :** LDHA transfected 293T cell lysate

**Lane 2 :** Untransfected 293T cell lysate

Lysates/proteins at 50 µg per lane.

**Predicted band size:** 37 kDa

**Please note:** All products are "FOR RESEARCH USE ONLY AND ARE NOT INTENDED FOR DIAGNOSTIC OR THERAPEUTIC USE"

## Our Abpromise to you: Quality guaranteed and expert technical support

- Replacement or refund for products not performing as stated on the datasheet
- Valid for 12 months from date of delivery
- Response to your inquiry within 24 hours
- We provide support in Chinese, English, French, German, Japanese and Spanish

- Extensive multi-media technical resources to help you
- We investigate all quality concerns to ensure our products perform to the highest standards

If the product does not perform as described on this datasheet, we will offer a refund or replacement. For full details of the Abpromise, please visit <https://www.abcam.co.jp/abpromise> or contact our technical team.

### **Terms and conditions**

---

- Guarantee only valid for products bought direct from Abcam or one of our authorized distributors