

## Product datasheet

# Anti-Kir6.2 antibody ab95317

1 References [画像数 1](#)

### 製品の概要

製品名	Anti-Kir6.2 antibody
製品の詳細	Rabbit polyclonal to Kir6.2
由来種	Rabbit
アプリケーション	<b>適用あり:</b> WB
種交差性	<b>交差種:</b> Mouse, Human
免疫原	Synthetic peptide conjugated to KLH, selected from the N terminal region of Human Kir6.2.
ポジティブ・コントロール	Mouse stomach tissue lysate

### 製品の特性

製品の状態	Liquid
保存方法	Shipped at 4°C. Store at 4°C (up to 6 months). Store at -20°C long term.
バッファー	Preservative: 0.09% Sodium azide Constituent: PBS
精製度	Immunogen affinity purified
特記事項(精製)	ab95317 is purified through a protein A column, followed by peptide affinity purification.
ポリ/モノ	ポリクローナル
アイソタイプ	IgG

### アプリケーション

Our [Abpromise guarantee](#) covers the use of **ab95317** in the following tested applications.

The application notes include recommended starting dilutions; optimal dilutions/concentrations should be determined by the end user.

アプリケーション	Abreviews	特記事項
WB		1/100 - 1/500. Predicted molecular weight: 44 kDa.

### ターゲット情報

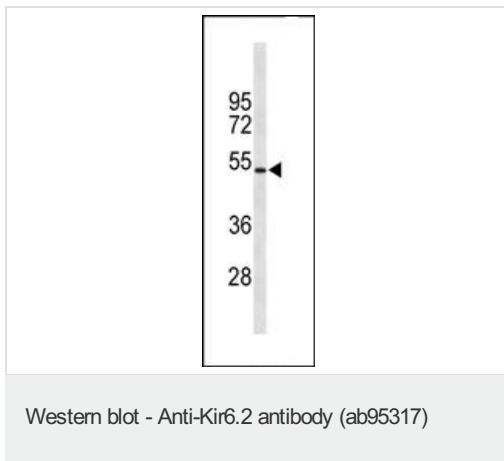
## 関連性

ATP-sensitive potassium (K(ATP)) channels are found in endocrine cells, neurons and both smooth and striated muscle, where they play an important role in controlling insulin secretion and vascular tone, and protect neurons under metabolic stress. Kir6.2 is a member of the inward rectifier potassium channel family, which is characterised by a greater tendency to allow potassium flow into the cell rather than out of it. It associates with the sulphonylurea receptor SUR1/ABCC8 to form a subfamily of K(ATP) channels that, when mutated or misregulated, are associated with forms of hyperinsulinemic hypoglycemia, neonatal diabetes, or pre-disposition to type 2 diabetes mellitus.

## 細胞内局在

Cell Membrane; Multi-pass membrane protein

## 画像



Anti-Kir6.2 antibody (ab95317) at 1/100 dilution (in TTBS/1% NFDm for 1 hr. at room temperature) + mouse stomach tissue lysate at 35 µg

### Secondary

Enzyme-linked secondary antibody (typically horseradish peroxidase or alkaline phosphatase) in TTBS/1% NFDm for 30 min. at room temperature.

**Predicted band size:** 44 kDa

**Please note:** All products are "FOR RESEARCH USE ONLY AND ARE NOT INTENDED FOR DIAGNOSTIC OR THERAPEUTIC USE"

## Our Abpromise to you: Quality guaranteed and expert technical support

- Replacement or refund for products not performing as stated on the datasheet
- Valid for 12 months from date of delivery
- Response to your inquiry within 24 hours
- We provide support in Chinese, English, French, German, Japanese and Spanish
- Extensive multi-media technical resources to help you
- We investigate all quality concerns to ensure our products perform to the highest standards

If the product does not perform as described on this datasheet, we will offer a refund or replacement. For full details of the Abpromise, please visit <https://www.abcam.co.jp/abpromise> or contact our technical team.

## Terms and conditions

- Guarantee only valid for products bought direct from Abcam or one of our authorized distributors