

## Product datasheet

# Anti-KLHL38 antibody ab121843

### 画像数 1

#### 製品の概要

製品名	Anti-KLHL38 antibody
製品の詳細	Rabbit polyclonal to KLHL38
由来種	Rabbit
アプリケーション	適用あり: IHC-P
種交差性	交差種: Human
免疫原	antigen sequence: VMGGYTRRI LAYDPQSNKF VKCADMKDRR MHHGATVMGN KLYVTGGRRLL TTDCNIEDSA SFDCYDPETD TWTSQGQLPH KLFDHA, corresponding to amino acids 482-567 of Human KLHL38. <a href="#">Run BLAST with ExPASy</a> <a href="#">Run BLAST with NCBI</a>
ポジティブ・コントロール	Human salivary gland tissue.

#### 製品の特性

製品の状態	Liquid
保存方法	Shipped at 4°C. Upon delivery aliquot and store at -20°C. Avoid freeze / thaw cycles.
バッファー	pH: 7.20 Preservative: 0.02% Sodium azide Constituents: 59% PBS, 40% Glycerol
精製度	Immunogen affinity purified
ポリ/モノ	ポリクローナル
アイソタイプ	IgG

#### アプリケーション

Our [Abpromise guarantee](#) covers the use of **ab121843** in the following tested applications.

The application notes include recommended starting dilutions; optimal dilutions/concentrations should be determined by the end user.

アプリケーション	Abreviews	特記事項
----------	-----------	------

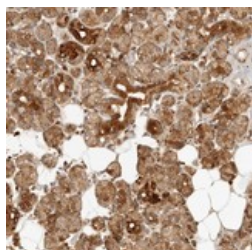
アプリケーション	Abreviews	特記事項
IHC-P		1/10 - 1/20. Perform heat mediated antigen retrieval with citrate buffer pH 6 before commencing with IHC staining protocol.

## ターゲット情報

### 配列類似性

Contains 1 BACK (BTB/Kelch associated) domain.  
 Contains 1 BTB (POZ) domain.  
 Contains 6 Kelch repeats.

## 画像



ab121843 at 1/10 dilution staining KLHL38 in Paraffin-embedded Human Salivary gland tissue by Immunohistochemistry. Note: strong cytoplasmic positivity in glandular cells.

Immunohistochemistry (Formalin/PFA-fixed paraffin-embedded sections) - Anti-KLHL38 antibody (ab121843)

**Please note:** All products are "FOR RESEARCH USE ONLY AND ARE NOT INTENDED FOR DIAGNOSTIC OR THERAPEUTIC USE"

## Our Abpromise to you: Quality guaranteed and expert technical support

- Replacement or refund for products not performing as stated on the datasheet
- Valid for 12 months from date of delivery
- Response to your inquiry within 24 hours
- We provide support in Chinese, English, French, German, Japanese and Spanish
- Extensive multi-media technical resources to help you
- We investigate all quality concerns to ensure our products perform to the highest standards

If the product does not perform as described on this datasheet, we will offer a refund or replacement. For full details of the Abpromise, please visit <https://www.abcam.co.jp/abpromise> or contact our technical team.

## Terms and conditions

- Guarantee only valid for products bought direct from Abcam or one of our authorized distributors