


Product datasheet

Anti-KIAA1688 antibody ab93780

画像数 2

製品の概要

製品名	Anti-KIAA1688 antibody
製品の詳細	Rabbit polyclonal to KIAA1688
由来種	Rabbit
アプリケーション	適用あり: WB, IP
種交差性	交差種: Human 交差が予測される動物種: Chimpanzee, Rhesus monkey, Gorilla, Tilapia 
免疫原	Synthetic peptide from a region within amino acids 50-100 of Human KIAA1688 (EAW82062.1)
ポジティブ・コントロール	HeLa cell lysate 293 T cell lysate

製品の特性

製品の状態	Liquid
保存方法	Shipped at 4°C. Upon delivery aliquot and store at -20°C. Avoid freeze / thaw cycles.
バッファー	Preservative: 0.09% Sodium Azide Constituents: Tris citrate/phosphate, pH 7 to 8
精製度	Immunogen affinity purified
ポリ/モノ	ポリクローナル
アイソタイプ	IgG

アプリケーション

Our [Abpromise guarantee](#) covers the use of **ab93780** in the following tested applications.

The application notes include recommended starting dilutions; optimal dilutions/concentrations should be determined by the end user.

アプリケーション	Abreviews	特記事項
----------	-----------	------

WB

IP

追加情報

IP: Use at 5-15µg/mg of lysate.

WB: 1/2000 - 1/10000. Predicted molecular weight: 121 kDa.

Not yet tested in other applications.

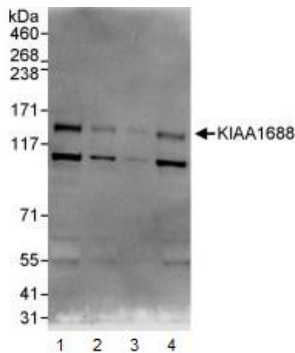
Optimal dilutions/concentrations should be determined by the end user.

ターゲット情報

関連性 KIAA1688 was identified as a hypothetical protein predicted from the in silico analysis of long cDNAs isolated in the Kazusa cDNA sequencing project. The function of KIAA1688 has not been characterized.

細胞内局在 Nuclear

画像



Western blot - Anti-KIAA1688 antibody (ab93780)

All lanes : Anti-KIAA1688 antibody (ab93780) at 0.1 µg/ml

Lane 1 : HeLa cell lysate at 50 µg

Lane 2 : HeLa cell lysate at 15 µg

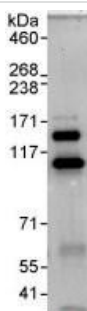
Lane 3 : HeLa cell lysate at 5 µg

Lane 4 : 293T cell lysate at 50 µg

Developed using the ECL technique.

Predicted band size: 121 kDa

Exposure time: 3 minutes



Immunoprecipitation - Anti-KIAA1688 antibody (ab93780)

Immunoprecipitation : 1 mg of HeLa cell lysate immunoprecipitated with ab93780 at 10 µg/mg lysate; 20% of immunoprecipitate loaded in lane

Western Blot : KIAA1688 antibody (ab93780) at 1 µg/ml

Developed using the ECL technique

Exposure time : 3 minutes

Please note: All products are "FOR RESEARCH USE ONLY AND ARE NOT INTENDED FOR DIAGNOSTIC OR THERAPEUTIC USE"

Our Abpromise to you: Quality guaranteed and expert technical support

- Replacement or refund for products not performing as stated on the datasheet
- Valid for 12 months from date of delivery
- Response to your inquiry within 24 hours

- We provide support in Chinese, English, French, German, Japanese and Spanish
- Extensive multi-media technical resources to help you
- We investigate all quality concerns to ensure our products perform to the highest standards

If the product does not perform as described on this datasheet, we will offer a refund or replacement. For full details of the Abpromise, please visit <https://www.abcam.co.jp/abpromise> or contact our technical team.

Terms and conditions

- Guarantee only valid for products bought direct from Abcam or one of our authorized distributors