

Product datasheet

Anti-KBTBD13 antibody ab110507

画像数 1

製品の概要

製品名	Anti-KBTBD13 antibody
製品の詳細	Rabbit polyclonal to KBTBD13
由来種	Rabbit
アプリケーション	適用あり: WB
種交差性	交差種: Human
免疫原	Synthetic peptide conjugated to KLH, corresponding to a region within C terminal amino acids 416-446 of Human KBTBD13 (NP_001094832.1).
ポジティブ・コントロール	MCF7 cell line lysates.

製品の特性

製品の状態	Liquid
保存方法	Shipped at 4°C. Store at 4°C (up to 6 months). Store at -20°C long term.
バッファー	Preservative: 0.09% Sodium azide Constituent: PBS
精製度	Immunogen affinity purified
特記事項(精製)	ab110507 is purified through a protein A column, followed by peptide affinity purification.
ポリ/モノ	ポリクローナル
アイソタイプ	IgG

アプリケーション

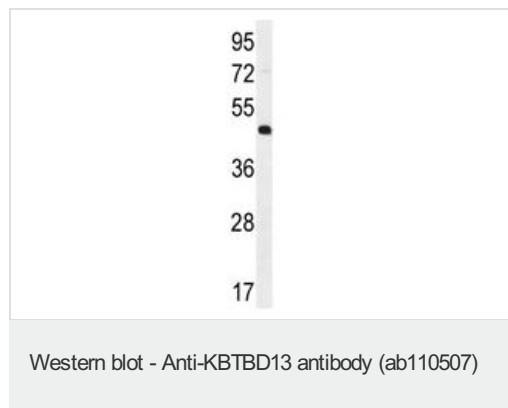
Our [Abpromise guarantee](#) covers the use of **ab110507** in the following tested applications.

The application notes include recommended starting dilutions; optimal dilutions/concentrations should be determined by the end user.

アプリケーション	Abreviews	特記事項
WB		1/100 - 1/500. Predicted molecular weight: 49 kDa.

組織特異性	Expressed in skeletal muscle.
関連疾患	Defects in KBTBD13 are the cause of nemaline myopathy type 6 (NEM6) [MIM:609273]. A form of nemaline myopathy characterized by childhood onset of slowly progressive proximal muscle weakness, exercise intolerance, and slow movements with stiff muscles. Patients are unable to run or correct themselves from falling over.
配列類似性	Contains 1 BTB (POZ) domain. Contains 5 Kelch repeats.
細胞内局在	Cytoplasm.

画像



Anti-KBTBD13 antibody (ab110507) at 1/100 dilution + MCF7 cell line lysate at 35 µg

Predicted band size: 49 kDa

Please note: All products are "FOR RESEARCH USE ONLY AND ARE NOT INTENDED FOR DIAGNOSTIC OR THERAPEUTIC USE"

Our Abpromise to you: Quality guaranteed and expert technical support

- Replacement or refund for products not performing as stated on the datasheet
- Valid for 12 months from date of delivery
- Response to your inquiry within 24 hours
- We provide support in Chinese, English, French, German, Japanese and Spanish
- Extensive multi-media technical resources to help you
- We investigate all quality concerns to ensure our products perform to the highest standards

If the product does not perform as described on this datasheet, we will offer a refund or replacement. For full details of the Abpromise, please visit <https://www.abcam.co.jp/abpromise> or contact our technical team.

Terms and conditions

- Guarantee only valid for products bought direct from Abcam or one of our authorized distributors