


Product datasheet

Anti-KAT8 / MYST1 / MOF antibody ab95145

画像数 1

製品の概要

製品名	Anti-KAT8 / MYST1 / MOF antibody
製品の詳細	Rabbit polyclonal to KAT8 / MYST1 / MOF
由来種	Rabbit
アプリケーション	適用あり: IHC-P
種交差性	交差種: Human 交差が予測される動物種: Cow, Chimpanzee, Rhesus monkey, Gorilla, Orangutan, Bat, Elephant 
免疫原	Synthetic peptide, corresponding to a region within amino acids 1-50 of Human KAT8/ MYST1/ MOF (BAB13924.1).
ポジティブ・コントロール	Human breast Carcinoma

製品の特性

製品の状態	Liquid
保存方法	Shipped at 4°C. Upon delivery aliquot and store at -20°C. Avoid freeze / thaw cycles.
バッファー	Preservative: 0.09% Sodium Azide Constituents: 0.1% BSA, Tris buffered saline
精製度	Immunogen affinity purified
ポリ/モノ	ポリクローナル
アイソタイプ	IgG

アプリケーション

Our [Abpromise guarantee](#) covers the use of **ab95145** in the following tested applications.

The application notes include recommended starting dilutions; optimal dilutions/concentrations should be determined by the end user.

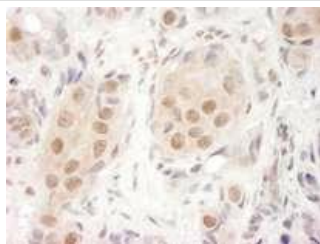
アプリケーション	Abreviews	特記事項

アプリ ケーショ ン	Abreviews	特記事項
IHC-P	1/100 - 1/500. Antigen retrieval is not essential but may optimise staining. Epitope exposure is recommended. Epitope exposure with tris-EDTA pH9.0 buffer will enhance staining.	

## ターゲット情報

機能	Histone acetyltransferase which may be involved in transcriptional activation. May influence the function of ATM.
配列類似性	Belongs to the MYST (SAS/MOZ) family. Contains 1 C2HC-type zinc finger. Contains 1 chromo domain.
細胞内局在	Nucleus.

## 画像



ab95145, at 1/250 dilution, staining KAT8 / MYST1 / MOF in formalin-fixed, paraffin-embedded Human breast carcinoma by Immunohistochemistry using DAB detection. Epitope retrieval was performed.

Immunohistochemistry (Formalin/PFA-fixed paraffin-embedded sections) - Anti-KAT8 / MYST1 / MOF antibody (ab95145)

**Please note:** All products are "FOR RESEARCH USE ONLY AND ARE NOT INTENDED FOR DIAGNOSTIC OR THERAPEUTIC USE"

## Our Abpromise to you: Quality guaranteed and expert technical support

- Replacement or refund for products not performing as stated on the datasheet
- Valid for 12 months from date of delivery
- Response to your inquiry within 24 hours
- We provide support in Chinese, English, French, German, Japanese and Spanish
- Extensive multi-media technical resources to help you
- We investigate all quality concerns to ensure our products perform to the highest standards

If the product does not perform as described on this datasheet, we will offer a refund or replacement. For full details of the Abpromise, please visit <https://www.abcam.co.jp/abpromise> or contact our technical team.

## Terms and conditions

---

- Guarantee only valid for products bought direct from Abcam or one of our authorized distributors