

Product datasheet

Anti-Iba1 antibody ab105464

★★★★☆ 4 Abreviews 1 References 画像数 2

製品の概要

製品名	Anti-Iba1 antibody
製品の詳細	Rabbit polyclonal to Iba1
由来種	Rabbit
特異性	For WB we recommend blocking in 3% milk. Blocking with BSA gives high background.
アプリケーション	適用あり: WB, IHC-P
種交差性	交差種: Mouse, Human 交差が予測される動物種: Horse, Dog, Pig, Macaque monkey, Gorilla ▲
免疫原	Synthetic peptide corresponding to Mouse Iba1 aa 1-100 conjugated to Keyhole Limpet Haemocyanin (KLH). (Peptide available as ab125894)
ポジティブ・コントロール	Human hippocampus formalin fixed paraffin embedded tissue section; Human and mouse spleen tissue lysate; U937, MOLT4, THP1, Raw 264.7, NR8383 whole cell lysates

製品の特性

製品の状態	Liquid
保存方法	Shipped at 4°C. Store at +4°C short term (1-2 weeks). Upon delivery aliquot. Store at -20°C or -80°C. Avoid freeze / thaw cycle.
バッファー	pH: 7.40 Preservative: 0.02% Sodium azide Constituent: PBS Note: Batches of this product that have a concentration < 1mg/ml may have BSA added as a stabilising agent. If you would like information about the formulation of a specific lot, please contact our scientific support team who will be happy to help.
精製度	Immunogen affinity purified
ポリモノ	ポリクローナル
アイソタイプ	IgG

アプリケーション

Our [Abpromise guarantee](#) covers the use of **ab105464** in the following tested applications.

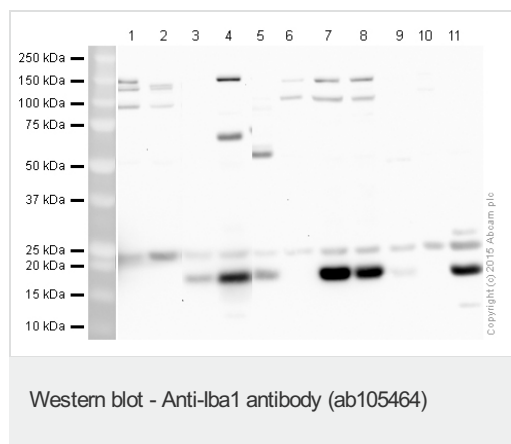
The application notes include recommended starting dilutions; optimal dilutions/concentrations should be determined by the end user.

アプリケーション	Abreviews	特記事項
WB		Use a concentration of 5 µg/ml. Detects a band of approximately 17 kDa (predicted molecular weight: 16 kDa). For WB we recommend blocking in 3% milk. Blocking with BSA gives high background.
IHC-P	★★★★☆	Use a concentration of 1 µg/ml. Perform heat mediated antigen retrieval with citrate buffer pH 6 before commencing with IHC staining protocol.

ターゲット情報

機能	Actin-binding protein that enhances membrane ruffling and RAC activation. Enhances the actin-bundling activity of LCP1. Binds calcium. Plays a role in RAC signaling and in phagocytosis. May play a role in macrophage activation and function. Promotes the proliferation of vascular smooth muscle cells and of T-lymphocytes. Enhances lymphocyte migration. Plays a role in vascular inflammation.
組織特異性	Detected in T-lymphocytes and peripheral blood mononuclear cells.
配列類似性	Contains 2 EF-hand domains.
翻訳後修飾	Phosphorylated on serine residues.
細胞内局在	Cytoplasm > cytoskeleton. Cell projection > ruffle membrane. Associated with the actin cytoskeleton at membrane ruffles and at sites of phagocytosis.

画像



All lanes : Anti-Iba1 antibody (ab105464) at 5 µg/ml

Lane 1 : HEK293 whole cell lysate at 20 µg

Lane 2 : A431 whole cell lysate at 20 µg

Lane 3 : Human spleen tissue lysate at 30 µg

Lane 4 : Mouse spleen tissue lysate at 30 µg

Lane 5 : U937 whole cell lysate at 30 µg

Lane 6 : MOLT4 whole cell lysate at 30 µg

Lane 7 : THP1 whole cell lysate at 30 µg

Lane 8 : THP1 whole cell lysate, PMA treated at 30 µg

Lane 9 : Raw 264.7 whole cell lysate at 30 µg

Lane 10 : C6 whole cell lysate at 30 µg

Lane 11 : NR8383 whole cell lysate at 30 µg

Developed using the ECL technique.

Performed under reducing conditions.

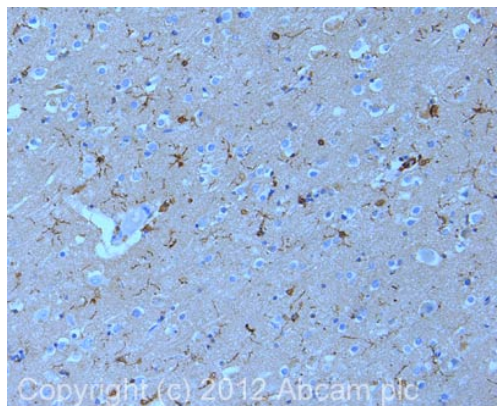
Predicted band size: 16 kDa

Observed band size: 17 kDa

Exposure time: 3 minutes

All lanes blocked using 3% milk. For ab105464 in WB we recommend blocking in milk. Blocking with BSA gives high background.

This blot was produced using a 4-12% Bis-Tris gel under the MOPS buffer system. The gel was run at 200V for 60 minutes before being transferred onto a nitrocellulose membrane at 30V for 70 minutes. The membrane was then blocked for an hour before being incubated with [ab108539](#) (anti-lba1 antibody; 1/1000) for 18 hours at 4°C. Antibody binding was detected using HRP-labelled anti-Rabbit IgG for 1 hour at room temperature and visualised using ECL development solution [ab133406](#).



Immunohistochemistry (Formalin/PFA-fixed paraffin-embedded sections) - Anti-Iba1 antibody (ab105464)

IHC image of ab105464 staining in human hippocampus formalin fixed paraffin embedded tissue section, performed on a Leica Bond™ system using the standard protocol F. The section was pre-treated using heat mediated antigen retrieval with EDTA (pH9, epitope retrieval solution 2) for 20 mins. The section was then incubated with ab105464, 1µg/ml, for 15 mins at room temperature and detected using an HRP conjugated compact polymer system. DAB was used as the chromogen. The section was then counterstained with haematoxylin and mounted with DPX.

For other IHC staining systems (automated and non-automated) customers should optimize variable parameters such as antigen retrieval conditions, primary antibody concentration and antibody incubation times

Please note: All products are "FOR RESEARCH USE ONLY AND ARE NOT INTENDED FOR DIAGNOSTIC OR THERAPEUTIC USE"

Our Abpromise to you: Quality guaranteed and expert technical support

- Replacement or refund for products not performing as stated on the datasheet
- Valid for 12 months from date of delivery
- Response to your inquiry within 24 hours
- We provide support in Chinese, English, French, German, Japanese and Spanish
- Extensive multi-media technical resources to help you
- We investigate all quality concerns to ensure our products perform to the highest standards

If the product does not perform as described on this datasheet, we will offer a refund or replacement. For full details of the Abpromise, please visit <https://www.abcam.co.jp/abpromise> or contact our technical team.

Terms and conditions

- Guarantee only valid for products bought direct from Abcam or one of our authorized distributors