

Product datasheet

Anti-IL-6R antibody [B-R6] (FITC) ab27321

画像数 1

製品の概要

製品名	Anti-IL-6R antibody [B-R6] (FITC)
製品の詳細	Mouse monoclonal [B-R6] to IL-6R (FITC)
由来種	Mouse
標識	FITC. Ex: 493nm, Em: 528nm
特異性	This antibody recognises the Interleukin 6 Receptor alpha subunit (IL6 Ra, IL6R).
アプリケーション	適用あり: Flow Cyt, IHC-Fr, WB
種交差性	交差種: Human
免疫原	Recombinant full length protein corresponding to Human IL-6R.
ポジティブ・コントロール	Cells from U266 cell line.

製品の特性

製品の状態	Liquid
保存方法	Shipped at 4°C. Store at +4°C.
バッファー	Preservative: 0.1% Sodium azide Constituents: PBS, 5% BSA
精製度	Ion Exchange Chromatography
ポリ/モノ	モノクローナル
クローン名	B-R6
ミエローマ	x63-Ag8.653
アイソタイプ	IgG1

アプリケーション

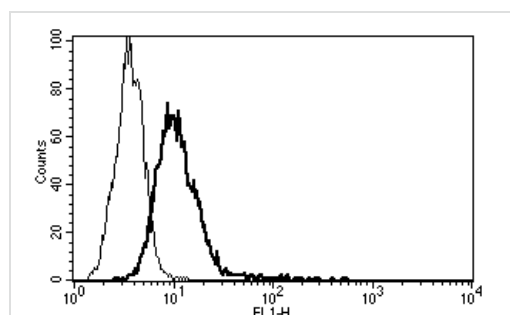
Our [Abpromise guarantee](#) covers the use of **ab27321** in the following tested applications.

The application notes include recommended starting dilutions; optimal dilutions/concentrations should be determined by the end user.

アプリケーション	Abreviews	特記事項
Flow Cyt		

アプリケーション	Abreviews	特記事項
IHC-Fr		
WB		
追加情報	<p>Flow Cyt: Use Neat: 10μl for 10⁶ cells or 100μl whole blood. IHC-Fr: Use at an assay dependent dilution (PMID 19658188). WB: Use at an assay dependent dilution (PMID 19658188).</p> <p>Not yet tested in other applications. Optimal dilutions/concentrations should be determined by the end user.</p>	
ターゲット情報		
機能	<p>Part of the receptor for interleukin 6. Binds to IL6 with low affinity, but does not transduce a signal. Signal activation necessitate an association with IL6ST. Activation may lead to the regulation of the immune response, acute-phase reactions and hematopoiesis.</p> <p>Low concentration of a soluble form of IL6 receptor acts as an agonist of IL6 activity.</p>	
組織特異性	<p>Isoform 2 is expressed in peripheral blood mononuclear cells and weakly found in urine and serum.</p>	
配列類似性	<p>Belongs to the type I cytokine receptor family. Type 3 subfamily. Contains 1 fibronectin type-III domain. Contains 1 Ig-like C2-type (immunoglobulin-like) domain.</p>	
ドメイン	<p>The two fibronectin type-III-like domains, contained in the N-terminal part, form together a cytokine-binding domain. The WSXWS motif appears to be necessary for proper protein folding and thereby efficient intracellular transport and cell-surface receptor binding.</p>	
翻訳後修飾	<p>A short soluble form may also be released from the membrane by proteolysis.</p>	
細胞内局在	<p>Secreted and Basolateral cell membrane.</p>	

画像



ab27321 at 10 μ l/10⁶ cells staining IL6R in U266 cell line by Flow Cytometry.

Flow Cytometry - Anti-IL-6R antibody [B-R6] (FITC)
(ab27321)

Our Abpromise to you: Quality guaranteed and expert technical support

- Replacement or refund for products not performing as stated on the datasheet
- Valid for 12 months from date of delivery
- Response to your inquiry within 24 hours

- We provide support in Chinese, English, French, German, Japanese and Spanish
- Extensive multi-media technical resources to help you
- We investigate all quality concerns to ensure our products perform to the highest standards

If the product does not perform as described on this datasheet, we will offer a refund or replacement. For full details of the Abpromise, please visit <https://www.abcam.co.jp/abpromise> or contact our technical team.

Terms and conditions

- Guarantee only valid for products bought direct from Abcam or one of our authorized distributors