

Product datasheet

Human SHP1 peptide ab42772

画像数 1

製品の概要

製品名 Human SHP1 peptide

製品の詳細

由来 Synthetic  
 アミノ酸配列  
 生物種 Human  
 修飾 phospho S591

特性

Our [Abpromise guarantee](#) covers the use of **ab42772** in the following tested applications.

The application notes include recommended starting dilutions; optimal dilutions/concentrations should be determined by the end user.

生理活性 The ab42772 peptide blocks antibodies that recognise amino acids around phosphorylated serine 591 of human SHP1. This sequence is highly conserved in rat and mouse SHP1.

アプリケーション Blocking - Blocking peptide for Anti-SHP1 (phospho S591) antibody ([ab41436](#))  
 ELISA

製品の状態 Liquid

備考 Tyrosine and serine phosphorylation regulate SHP1 activity. Serine phosphorylation at Ser-591 is mediated by PKC-alpha and leads to inhibition of phosphatase activity.  
 The ab42772 peptide blocks antibodies that recognise amino acids around phosphorylated serine 591 of human SHP1. This sequence is highly conserved in rat and mouse SHP1.

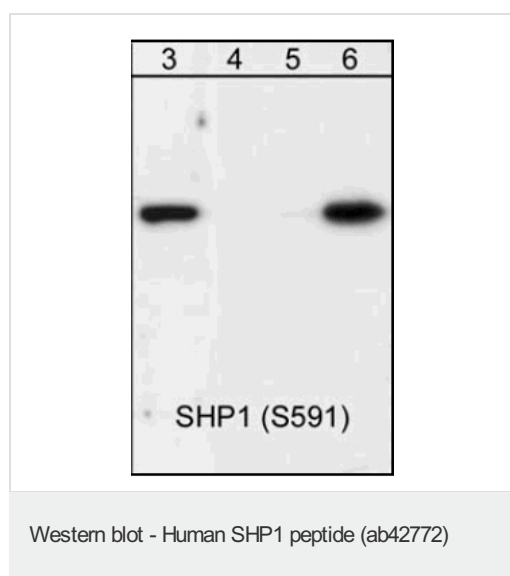
前処理および保存

保存方法および安定性 Shipped at 4°C. Upon delivery aliquot and store at -20°C. Avoid freeze / thaw cycles.  
 Preservative: 0.05% Sodium azide  
 Constituent: PBS

関連情報

<b>機能</b>	Plays a key role in hematopoiesis. This PTPase activity may directly link growth factor receptors and other signaling proteins through protein-tyrosine phosphorylation. The SH2 regions may interact with other cellular components to modulate its own phosphatase activity against interacting substrates. Together with MTUS1, induces UBE2V2 expression upon angiotensin II stimulation.
<b>組織特異性</b>	Isoform 1 is expressed in hematopoietic cells. Isoform 2 is expressed in non-hematopoietic cells.
<b>配列類似性</b>	Belongs to the protein-tyrosine phosphatase family. Non-receptor class 2 subfamily. Contains 2 SH2 domains. Contains 1 tyrosine-protein phosphatase domain.
<b>翻訳後修飾</b>	Phosphorylated on serine and tyrosine residues.
<b>細胞内局在</b>	Cytoplasm. Nucleus. In neurons, translocates into the nucleus after treatment with angiotensin II.

## 画像



**All lanes :** Anti-SHP1 (phospho S591) antibody ([ab41436](#))

**Lane 3 :** human Jurkat cells treated with pervanadate (1 mM) for 30 min

**Lane 4 :** human Jurkat cells treated with pervanadate (1 mM ( for 30 min) and exposed to lambda phosphatase

**Lane 5 :** human Jurkat cells treated with pervanadate (1 mM) for 30 min with phospho-SHP1 (Ser-591) peptide

**Lane 6 :** human Jurkat cells treated with pervanadate (1 mM) for 30 min with non-specific phospho-serine peptide

**Please note:** All products are "FOR RESEARCH USE ONLY AND ARE NOT INTENDED FOR DIAGNOSTIC OR THERAPEUTIC USE"

## Our Abpromise to you: Quality guaranteed and expert technical support

- Replacement or refund for products not performing as stated on the datasheet
- Valid for 12 months from date of delivery
- Response to your inquiry within 24 hours
- We provide support in Chinese, English, French, German, Japanese and Spanish
- Extensive multi-media technical resources to help you
- We investigate all quality concerns to ensure our products perform to the highest standards

If the product does not perform as described on this datasheet, we will offer a refund or replacement. For full details of the Abpromise, please visit <https://www.abcam.co.jp/abpromise> or contact our technical team.

## Terms and conditions

---

- Guarantee only valid for products bought direct from Abcam or one of our authorized distributors