

Product datasheet

Anti-Hsp70 antibody ab69413

画像数 1

製品の概要

| | |
|--------------|--|
| 製品名 | Anti-Hsp70 antibody |
| 製品の詳細 | Rabbit polyclonal to Hsp70 |
| 由来種 | Rabbit |
| アプリケーション | 適用あり: WB, IP |
| 種交差性 | 交差種: Mouse, Rat, Sheep, Hamster, Cow, Dog, Human, Pig, Monkey |
| 免疫原 | Synthetic peptide (Human) |
| ポジティブ・コントロール | Heat shocked HeLa or Vero cell lysate. |

製品の特性

| | |
|--------|---|
| 製品の状態 | Liquid |
| 保存方法 | Shipped at 4°C. Upon delivery aliquot and store at -20°C. Avoid freeze / thaw cycles. |
| バッファー | Preservative: 0.09% Sodium Azide Constituents: 50% Glycerol, PBS, pH 7.2 |
| 精製度 | Protein A purified |
| ポリ/モノ | ポリクローナル |
| アイソタイプ | IgG |

アプリケーション

Our [Abpromise guarantee](#) covers the use of **ab69413** in the following tested applications.

The application notes include recommended starting dilutions; optimal dilutions/concentrations should be determined by the end user.

| アプリケーション | Abreviews | 特記事項 |
|----------|-----------|--|
| WB | | 1/1000. Detects a band of approximately 70 kDa (predicted molecular weight: 70 kDa). |
| IP | | 1/100. |

ターゲット情報

機能

In cooperation with other chaperones, Hsp70s stabilize preexistent proteins against aggregation and mediate the folding of newly translated polypeptides in the cytosol as well as within organelles. These chaperones participate in all these processes through their ability to recognize nonnative conformations of other proteins. They bind extended peptide segments with a net hydrophobic character exposed by polypeptides during translation and membrane translocation, or following stress-induced damage. In case of rotavirus A infection, serves as a post-attachment receptor for the virus to facilitate entry into the cell.

組織特異性

HSPA1B is testis-specific.

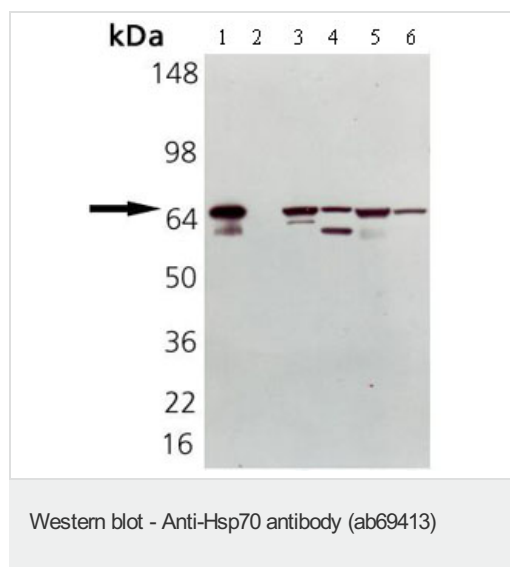
配列類似性

Belongs to the heat shock protein 70 family.

細胞内局在

Cytoplasm. Localized in cytoplasmic mRNP granules containing untranslated mRNAs.

画像



All lanes : Anti-Hsp70 antibody (ab69413) at 1/1000 dilution

Lane 1 : Hsp70 recombinant human protein

Lane 2 : Hsc70 recombinant bovine protein

Lane 3 : Cell lysates prepared from heat shock treated HeLa cells

Lane 4 : Cell lysates prepared from heat shock treated PC-12 cells

Lane 5 : Cell lysates prepared from heat shock treated Vero cells

Lane 6 : Cell lysates prepared from heat shock treated CHO-K1 cells

Predicted band size: 70 kDa

Please note: All products are "FOR RESEARCH USE ONLY AND ARE NOT INTENDED FOR DIAGNOSTIC OR THERAPEUTIC USE"

Our Abpromise to you: Quality guaranteed and expert technical support

- Replacement or refund for products not performing as stated on the datasheet
- Valid for 12 months from date of delivery
- Response to your inquiry within 24 hours
- We provide support in Chinese, English, French, German, Japanese and Spanish
- Extensive multi-media technical resources to help you
- We investigate all quality concerns to ensure our products perform to the highest standards

If the product does not perform as described on this datasheet, we will offer a refund or replacement. For full details of the Abpromise, please visit <https://www.abcam.co.jp/abpromise> or contact our technical team.

Terms and conditions

- Guarantee only valid for products bought direct from Abcam or one of our authorized distributors