

Product datasheet

Anti-Hsp60 antibody [LK-2] ab59458

★★★★★ 1 Abreviews 1 References 画像数 4

製品の概要

製品名	Anti-Hsp60 antibody [LK-2]
製品の詳細	Mouse monoclonal [LK-2] to Hsp60
由来種	Mouse
アプリケーション	適用あり: IHC-Fr, IHC-P, WB, Flow Cyt
種交差性	交差種: Mouse, Rat, Rabbit, Chicken, Guinea pig, Hamster, Cow, Human, Pig, Saccharomyces cerevisiae, Monkey, Escherichia coli
免疫原	Human Hsp60 produced through recombinant DNA methods in <i>E.coli</i>
ポジティブ・コントロール	HeLa cell lysate

製品の特性

製品の状態	Liquid
保存方法	Shipped at 4°C. Store at -20°C. Stable for 12 months at -20°C.
バッファー	Preservative: None Constituents: 50% Glycerol, PBS, 0.1mM PMSF
ポリ/モノ	モノクローナル
クローン名	LK-2
アイソタイプ	IgG1

アプリケーション

Our [Abpromise guarantee](#) covers the use of **ab59458** in the following tested applications.

The application notes include recommended starting dilutions; optimal dilutions/concentrations should be determined by the end user.

アプリケーション	Abreviews	特記事項
IHC-Fr		Use at an assay dependent concentration.
IHC-P		Use at an assay dependent concentration.
WB	★★★★★	Use a concentration of 0.25 µg/ml. Predicted molecular weight: 60 kDa.

アプリケーション	Abreviews	特記事項
----------	-----------	------

Flow Cyt

Use at an assay dependent concentration.

[ab170190](#) - Mouse monoclonal IgG1, is suitable for use as an isotype control with this antibody.

ターゲット情報

機能

Implicated in mitochondrial protein import and macromolecular assembly. May facilitate the correct folding of imported proteins. May also prevent misfolding and promote the refolding and proper assembly of unfolded polypeptides generated under stress conditions in the mitochondrial matrix.

関連疾患

Defects in HSPD1 are a cause of spastic paraplegia autosomal dominant type 13 (SPG13) [MIM:605280]. Spastic paraplegia is a degenerative spinal cord disorder characterized by a slow, gradual, progressive weakness and spasticity of the lower limbs.

Defects in HSPD1 are the cause of leukodystrophy hypomyelinating type 4 (HLD4) [MIM:612233]; also called mitochondrial HSP60 chaperonopathy or MitCHAP-60 disease. HLD4 is a severe autosomal recessive hypomyelinating leukodystrophy. Clinically characterized by infantile-onset rotary nystagmus, progressive spastic paraplegia, neurologic regression, motor impairment, profound mental retardation. Death usually occurs within the first two decades of life.

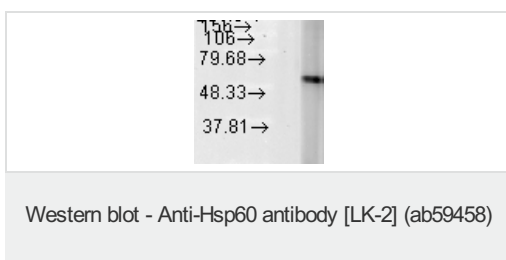
配列類似性

Belongs to the chaperonin (HSP60) family.

細胞内局在

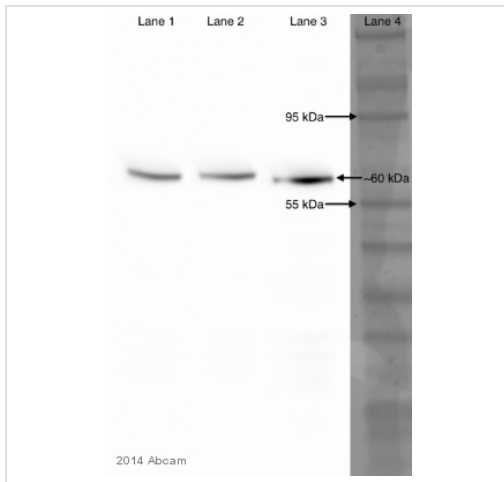
Mitochondrion matrix.

画像



Anti-Hsp60 antibody [LK-2] (ab59458) at 1/1000 dilution + HeLa cell lysate

Predicted band size: 60 kDa



Western blot - Anti-Hsp60 antibody [LK-2] (ab59458)

This image is courtesy of an anonymous Abreview

Lanes 1-3 : Anti-Hsp60 antibody [LK-2] (ab59458) at 1/4000 dilution

Lanes 1-3 : Saccharomyces cerevisiae whole cell lysate at 6900000 cells

Lane 4 : Ladder

Secondary

Lanes 1-2 : HRP-conjugated goat anti-mouse IgG monoclonal at 1/5000 dilution

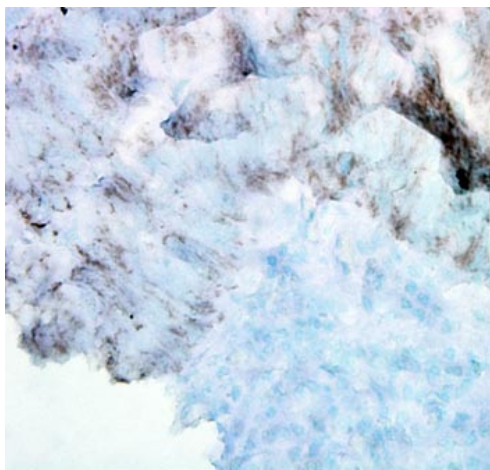
Lane 3 : HRP-conjugated goat anti-mouse IgG monoclonal at 1/2000 dilution

Performed under reducing conditions.

Predicted band size: 60 kDa

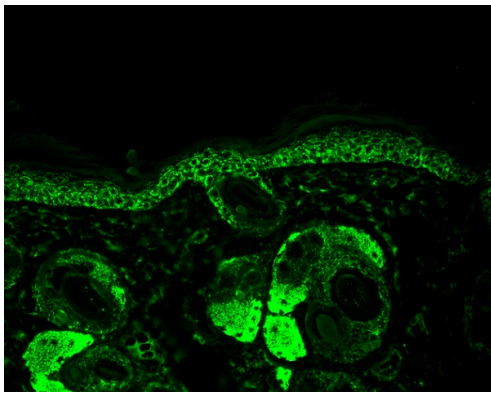
Observed band size: 60 kDa

Exposure time: 25 seconds



Immunohistochemistry (Formalin/PFA-fixed paraffin-embedded sections) - Anti-Hsp60 antibody [LK-2] (ab59458)

ab59464 at 100,000 dilution staining Hsp60 alpha in human colon tissue section by Immunohistochemistry (Bouin's fixed paraffin embedded tissue sections). Tissue underwent heat mediated antigen retrieval in microwave with 2, 5 minutes incubation intervals in citrate buffer. An antibody amplifier™ system was used for staining. A HRP-conjugated anti mouse secondary was used at 1/10 dilution.



Paraffin-embedded mouse back skin tissue stained for Hsp60 using ab59458 at 1/100 dilution in immunohistochemical analysis. DAB staining.

Immunohistochemistry (Formalin/PFA-fixed paraffin-embedded sections) - Anti-Hsp60 antibody [LK-2] (ab59458)

Please note: All products are "FOR RESEARCH USE ONLY AND ARE NOT INTENDED FOR DIAGNOSTIC OR THERAPEUTIC USE"

Our Abpromise to you: Quality guaranteed and expert technical support

- Replacement or refund for products not performing as stated on the datasheet
- Valid for 12 months from date of delivery
- Response to your inquiry within 24 hours
- We provide support in Chinese, English, French, German, Japanese and Spanish
- Extensive multi-media technical resources to help you
- We investigate all quality concerns to ensure our products perform to the highest standards

If the product does not perform as described on this datasheet, we will offer a refund or replacement. For full details of the Abpromise, please visit <https://www.abcam.co.jp/abpromise> or contact our technical team.

Terms and conditions

- Guarantee only valid for products bought direct from Abcam or one of our authorized distributors