

## Product datasheet

# Anti-Hemogen antibody ab108430

### 画像数 1

#### 製品の概要

製品名	Anti-Hemogen antibody
製品の詳細	Rabbit polyclonal to Hemogen
由来種	Rabbit
アプリケーション	適用あり: WB
種交差性	交差種: Human 交差が予測される動物種: Cat
免疫原	Synthetic peptide corresponding to a region within N terminal amino acids 1-50 (MDLGKDQSHL KHHQTPDPHQ EENHSPEVIG TWSLRNRELL RKRKAEVHEK) of Human Hemogen (NM_197978). <a href="#">Run BLAST with ExPASy</a> <a href="#">Run BLAST with NCBI</a>
ポジティブ・コントロール	HT1080 cell lysate.

#### 製品の特性

製品の状態	Liquid
保存方法	Shipped at 4°C. Upon delivery aliquot and store at -20°C. Avoid repeated freeze / thaw cycles.
バッファー	Preservative: 0.09% Sodium azide Constituents: 2% Sucrose, PBS
精製度	Immunogen affinity purified
ポリ/モノ	ポリクローナル
アイソタイプ	IgG

#### アプリケーション

Our [Abpromise guarantee](#) covers the use of **ab108430** in the following tested applications.

The application notes include recommended starting dilutions; optimal dilutions/concentrations should be determined by the end user.

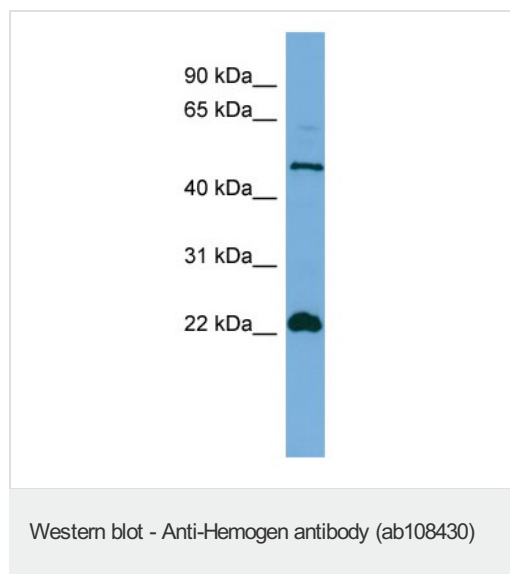
アプリケーション	Abreviews	特記事項
----------	-----------	------

アプリケーション	Abreviews	特記事項
WB		Use a concentration of 1 µg/ml. Predicted molecular weight: 55 kDa. Good results were obtained when blocked with 5% non-fat dry milk in 0.05% PBS-T.

## ターゲット情報

機能	Regulates the proliferation and differentiation of hematopoietic cells. Overexpression block the TPA-induced megakaryocytic differentiation in the K562 cell model. May also prevent cell apoptosis through the activation of the nuclear factor-kappa B (NF-kB).
組織特異性	Expressed in hematopoietic precursor cells (at protein level). Detected in CD34+ and K562 leukemia cell line (at protein level). Expressed in bone marrow, testis, thymus. Also expressed in thymus and thyroid tumors, non-Hodgkin lymphoma, various leukemia cell lines, peripheral blood mononuclear cells (PBMCs) and bone marrow mononuclear cells (BMMCs) of patients with leukemia.
発生段階	Expressed in fetal liver, kidney and brain.
細胞内局在	Nucleus.

## 画像



Anti-Hemogen antibody (ab108430) at 1 µg/ml + HT10180 cell lysate at 10 µg

**Predicted band size:** 55 kDa

Gel concentration: 12%.

**Please note:** All products are "FOR RESEARCH USE ONLY AND ARE NOT INTENDED FOR DIAGNOSTIC OR THERAPEUTIC USE"

## Our Abpromise to you: Quality guaranteed and expert technical support

- Replacement or refund for products not performing as stated on the datasheet
- Valid for 12 months from date of delivery
- Response to your inquiry within 24 hours
- We provide support in Chinese, English, French, German, Japanese and Spanish

- Extensive multi-media technical resources to help you
- We investigate all quality concerns to ensure our products perform to the highest standards

If the product does not perform as described on this datasheet, we will offer a refund or replacement. For full details of the Abpromise, please visit <https://www.abcam.co.jp/abpromise> or contact our technical team.

### **Terms and conditions**

---

- Guarantee only valid for products bought direct from Abcam or one of our authorized distributors