

Product datasheet

Anti-Galectin 1 antibody ab38328

KO 評価済

★★★★★ 1 Abreviews 2 References 画像数 2

製品の概要

製品名	Anti-Galectin 1 antibody
製品の詳細	Rabbit polyclonal to Galectin 1
由来種	Rabbit
アプリケーション	適用あり: WB
種交差性	交差種: Human, Chinese hamster 交差が予測される動物種: Mouse, Rat, Sheep, Cow, Dog, Pig, Orangutan
免疫原	Synthetic peptide conjugated to KLH derived from within residues 50 to the C-terminus of Human Galectin 1. Immunogen の所有権に関して (Peptide available as ab38327 .)
ポジティブ・コントロール	Recombinant human Galectin 1 protein (ab50237) can be used as a positive control in WB. ab38328 gave a positive signal in the following Human Lysates: Heart, Skeletal Muscle, Kidney (Data not shown), Thymus (Data not shown), HeLa, A431, HL60 (Data not shown), Ramos (Data not shown) and THP1 (Data not shown).

製品の特性

製品の状態	Liquid
保存方法	Shipped at 4°C. Store at +4°C short term (1-2 weeks). Upon delivery aliquot. Store at -20°C or -80°C. Avoid freeze / thaw cycle.
バッファー	Preservative: 0.02% Sodium Azide Constituents: 1% BSA, PBS, pH 7.4
精製度	Immunogen affinity purified
ポリ/モノ	ポリクローナル
アイソタイプ	IgG

アプリケーション

Our [Abpromise guarantee](#) covers the use of **ab38328** in the following tested applications.

The application notes include recommended starting dilutions; optimal dilutions/concentrations should be determined by the end user.

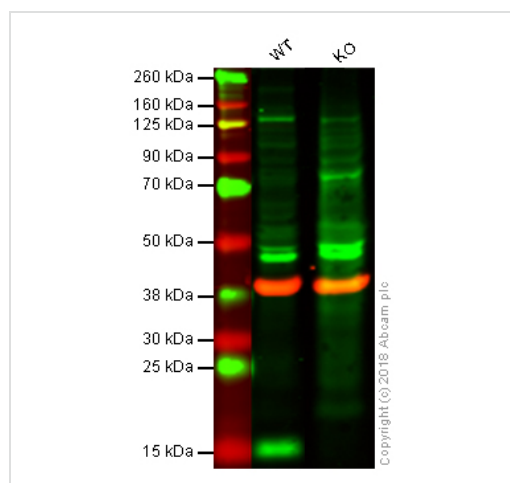
アプリ ケーション	Abreviews	特記事項
--------------	-----------	------

WB ★★★★★ Use a concentration of 1 µg/ml. Detects a band of approximately 14 kDa (predicted molecular weight: 14 kDa). Can be blocked with [Human Galectin 1 peptide \(ab38327\)](#).

ターゲット情報

機能	May regulate apoptosis, cell proliferation and cell differentiation. Binds beta-galactoside and a wide array of complex carbohydrates. Inhibits CD45 protein phosphatase activity and therefore the dephosphorylation of Lyn kinase.
組織特異性	Expressed in placenta, maternal decidua and fetal membranes. Within placenta, expressed in trophoblasts, stromal cells, villous endothelium, syncytiotrophoblast apical membrane and villous stroma. Within fetal membranes, expressed in amnion, chorioamniotic mesenchyma and chorion (at protein level). Expressed in cardiac, smooth, and skeletal muscle, neurons, thymus, kidney and hematopoietic cells.
配列類似性	Contains 1 galectin domain.
細胞内局在	Secreted > extracellular space > extracellular matrix.

画像



Western blot - Anti-Galectin 1 antibody (ab38328)

All lanes : Anti-Galectin 1 antibody (ab38328) at 1 µg

Lane 1 : Wild-type HAP1 whole cell lysate

Lane 2 : LGALS1 (Galectin 1) knockout HAP1 whole cell lysate

Lysates/proteins at 20 µg per lane.

Predicted band size: 14 kDa

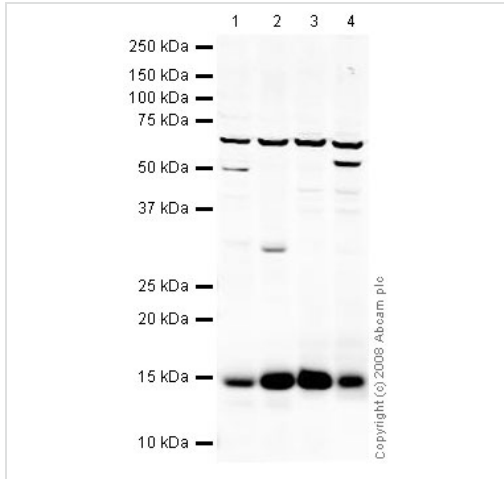
Observed band size: 15 kDa

[why is the actual band size different from the predicted?](#)

Lanes 1 - 2: Merged signal (red and green). Green - ab38328 observed at 15 kDa. Red - loading control, [ab9484](#), observed at 37 kDa.

ab38328 was shown to recognize Galectin 1 in wild-type HAP1 cells as signal was lost at the expected MW in LGALS1 (Galectin 1) knockout cells. Additional cross-reactive bands were observed in the wild-type and knockout cells. Wild-type and LGALS1 (Galectin 1) knockout samples were subjected to SDS-PAGE. Ab38328 and [ab9484](#) (Mouse anti GAPDH loading control) were incubated

overnight at 4°C at 1 µg/ml and 1/20000 dilution respectively. Blots were developed with Goat anti-Rabbit IgG H&L (IRDye® 800CW) preabsorbed [ab216773](#) and Goat anti-Mouse IgG H&L (IRDye® 680RD) preabsorbed [ab216776](#) secondary antibodies at 1/20000 dilution for 1 hour at room temperature before imaging.



Western blot - Anti-Galectin 1 antibody (ab38328)

All lanes : Anti-Galectin 1 antibody (ab38328) at 1 µg/ml

Lane 1 : Human heart tissue lysate - total protein ([ab29431](#))

Lane 2 : Human skeletal muscle tissue lysate - total protein ([ab29330](#))

Lane 3 : HeLa (Human epithelial carcinoma cell line) Whole Cell Lysate

Lane 4 : A431 (Human epithelial carcinoma cell line) Whole Cell Lysate

Lysates/proteins at 10 µg per lane.

Secondary

All lanes : IRDye 680 Conjugated Goat Anti-Rabbit IgG (H+L) at 1/10000 dilution

Performed under reducing conditions.

Predicted band size: 14 kDa

Observed band size: 14 kDa

Additional bands at: 34 kDa, 50 kDa, 70 kDa. We are unsure as to the identity of these extra bands.

Please note: All products are "FOR RESEARCH USE ONLY AND ARE NOT INTENDED FOR DIAGNOSTIC OR THERAPEUTIC USE"

Our Abpromise to you: Quality guaranteed and expert technical support

- Replacement or refund for products not performing as stated on the datasheet
- Valid for 12 months from date of delivery
- Response to your inquiry within 24 hours
- We provide support in Chinese, English, French, German, Japanese and Spanish
- Extensive multi-media technical resources to help you
- We investigate all quality concerns to ensure our products perform to the highest standards

If the product does not perform as described on this datasheet, we will offer a refund or replacement. For full details of the Abpromise, please visit <https://www.abcam.co.jp/abpromise> or contact our technical team.

Terms and conditions

- Guarantee only valid for products bought direct from Abcam or one of our authorized distributors