


Product datasheet

Anti-GW182 antibody ab114857

画像数 1

製品の概要

製品名	Anti-GW182 antibody
製品の詳細	Rabbit polyclonal to GW182
由来種	Rabbit
アプリケーション	適用あり: IP 適用なし: WB
種交差性	交差種: Human 交差が予測される動物種: Mouse, Rat, Rabbit, Horse, Chicken, Cow, Dog, Turkey, Chimpanzee, Rhesus monkey, Gorilla, Orangutan 
免疫原	Synthetic peptide, corresponding to a region within amino acids 1225-1275 of Human GW182 (NP_055309.2).
ポジティブ・コントロール	HeLa whole cell lysate

製品の特性

製品の状態	Liquid
保存方法	Shipped at 4°C. Upon delivery aliquot and store at -20°C. Avoid freeze / thaw cycles.
バッファー	Preservative: 0.09% Sodium azide Constituent: 99% Tris citrate/phosphate Note: pH 7 to 8
精製度	Immunogen affinity purified
ポリ/モノ	ポリクローナル
アイソタイプ	IgG

アプリケーション

Our [Abpromise guarantee](#) covers the use of **ab114857** in the following tested applications.

The application notes include recommended starting dilutions; optimal dilutions/concentrations should be determined by the end user.

アプリケーション	Abreviews	特記事項
IP		Use at 10 µg/mg of lysate.

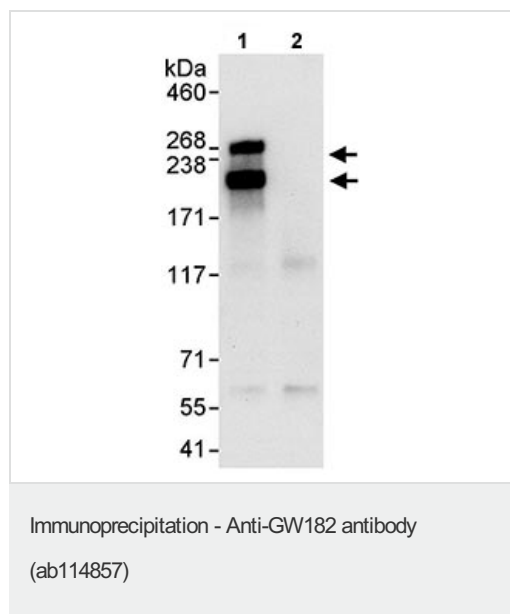
## 追加情報

Is unsuitable for WB.

## ターゲット情報

機能	Plays a role in RNA-mediated gene silencing by both micro-RNAs (miRNAs) and short interfering RNAs (siRNAs). Required for miRNA-dependent repression of translation and for siRNA-dependent endonucleolytic cleavage of complementary mRNAs by argonaute family proteins.
組織特異性	Ubiquitous.
配列類似性	Belongs to the GW182 family. Contains 1 RRM (RNA recognition motif) domain.
細胞内局在	Cytoplasm > P-body. Mammalian P-bodies are also known as GW bodies.

## 画像



Detection of GW182 in Immunoprecipitates of HeLa whole cell lysate (1 mg for IP, 20% of IP loaded) using ab114857 at 10 µg/mg lysate for IP (Lane 1). For WB detection an anti-GW182 antibody which recognizes a upstream epitope was used at 0.4 µg/ml. Lane 2 represents control IgG IP. Detection: Chemiluminescence with an exposure time of 30 seconds.

**Please note:** All products are "FOR RESEARCH USE ONLY AND ARE NOT INTENDED FOR DIAGNOSTIC OR THERAPEUTIC USE"

## Our Abpromise to you: Quality guaranteed and expert technical support

- Replacement or refund for products not performing as stated on the datasheet
- Valid for 12 months from date of delivery
- Response to your inquiry within 24 hours
- We provide support in Chinese, English, French, German, Japanese and Spanish
- Extensive multi-media technical resources to help you
- We investigate all quality concerns to ensure our products perform to the highest standards

If the product does not perform as described on this datasheet, we will offer a refund or replacement. For full details of the Abpromise, please visit <https://www.abcam.co.jp/abpromise> or contact our technical team.

## Terms and conditions

---

- Guarantee only valid for products bought direct from Abcam or one of our authorized distributors