


Product datasheet

Anti-GREB1 antibody ab84025

★★★★☆ 2 Abreviews [画像数 1](#)

製品の概要

製品名	Anti-GREB1 antibody
製品の詳細	Rabbit polyclonal to GREB1
由来種	Rabbit
アプリケーション	適用あり: WB
種交差性	交差種: Mouse, Human 交差が予測される動物種: Rat, Rabbit, Horse, Chicken, Guinea pig, Cow, Cat, Dog, Zebrafish 
免疫原	Synthetic peptide within residues: DNGHNALLGF SGNCVCGGKK GFCYFTEFSN HINLKLTTQP KKQKHLKYLL , corresponding to internal sequence amino acids 144-193 of Human GREB1(NP_683701) Run BLAST with ExPASy Run BLAST with NCBI
ポジティブ・コントロール	MCF7 cell lysate.

製品の特性

製品の状態	Liquid
保存方法	Shipped at 4°C. Upon delivery aliquot and store at -20°C. Avoid repeated freeze / thaw cycles.
バッファー	Preservative: 0.09% Sodium azide Constituents: 2% Sucrose, PBS
精製度	Immunogen affinity purified
特記事項(精製)	ab84025 is purified by a peptide affinity chromatography method.
ポリ/モノ	ポリクローナル
アイソタイプ	IgG

アプリケーション

Our [Abpromise guarantee](#) covers the use of **ab84025** in the following tested applications.

The application notes include recommended starting dilutions; optimal dilutions/concentrations should be determined by the end user.

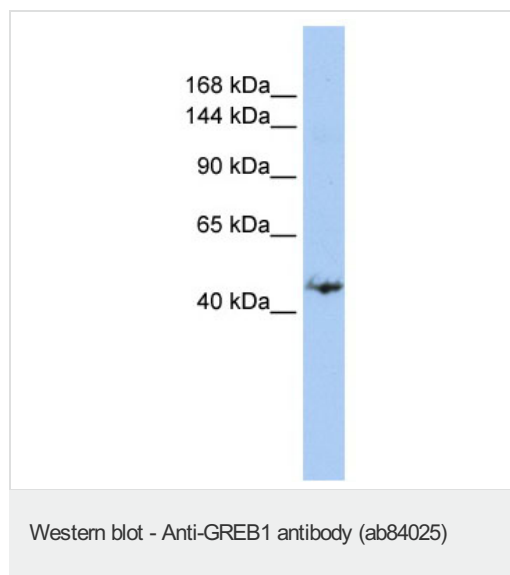
アプリ ケーション	Abreviews	特記事項
--------------	-----------	------

WB Use a concentration of 1 µg/ml. Detects a band of approximately 43 kDa (predicted molecular weight: 43 kDa). Good results were obtained when blocked with 5% non-fat dry milk in 0.05% PBS-T.

ターゲット情報

機能	Unknown. Primary target for estrogen receptor regulation. Acts as a regulator of hormone-dependent cancer growth in breast and prostate cancers.
組織特異性	Expressed in proliferating prostatic tissue and prostate cancer.
配列類似性	Belongs to the GREB1 family.
細胞内局在	Membrane.

画像



Anti-GREB1 antibody (ab84025) at 1 µg/ml +
MCF7 cell lysate at 10 µg

Secondary

HRP conjugated anti-Rabbit IgG at 1/50000
dilution

Predicted band size: 43 kDa

Observed band size: 43 kDa

Please note: All products are "FOR RESEARCH USE ONLY AND ARE NOT INTENDED FOR DIAGNOSTIC OR THERAPEUTIC USE"

Our Abpromise to you: Quality guaranteed and expert technical support

- Replacement or refund for products not performing as stated on the datasheet
- Valid for 12 months from date of delivery
- Response to your inquiry within 24 hours
- We provide support in Chinese, English, French, German, Japanese and Spanish
- Extensive multi-media technical resources to help you
- We investigate all quality concerns to ensure our products perform to the highest standards

If the product does not perform as described on this datasheet, we will offer a refund or replacement. For full details of the Abpromise,

please visit <https://www.abcam.co.jp/abpromise> or contact our technical team.

Terms and conditions

- Guarantee only valid for products bought direct from Abcam or one of our authorized distributors