

Product datasheet

Anti-GABA Transporter 1 / GAT 1 antibody ab426

★★★★★ 3 Abreviews 15 References 画像数 2

製品の概要

製品名	Anti-GABA Transporter 1 / GAT 1 antibody
製品の詳細	Rabbit polyclonal to GABA Transporter 1 / GAT 1
由来種	Rabbit
特異性	Reacts specifically with a 72 kDa protein.
アプリケーション	適用あり: IHC-P, IHC-Fr, WB, IHC-FoFr
種交差性	交差種: Mouse, Rat, Chicken 交差が予測される動物種: Human ▲
免疫原	Synthetic peptide corresponding to Rat GABA Transporter 1/ GAT 1 (C terminal). 20 amino acids. Database link: P23978
ポジティブ・コントロール	IHC-Fr: Mouse retinal tissue. WB: Rat hippocampus, spinal cord and brain tissue lysate.

製品の特性

製品の状態	Liquid
保存方法	Shipped at 4°C. Store at +4°C short term (1-2 weeks). Upon delivery aliquot. Store at -20°C or -80°C. Avoid freeze / thaw cycle.
バッファー	Constituent: Whole serum
精製度	Whole antiserum
ポリモノ	ポリクローナル
アイソタイプ	IgG

アプリケーション

Our [Abpromise guarantee](#) covers the use of **ab426** in the following tested applications.

The application notes include recommended starting dilutions; optimal dilutions/concentrations should be determined by the end user.

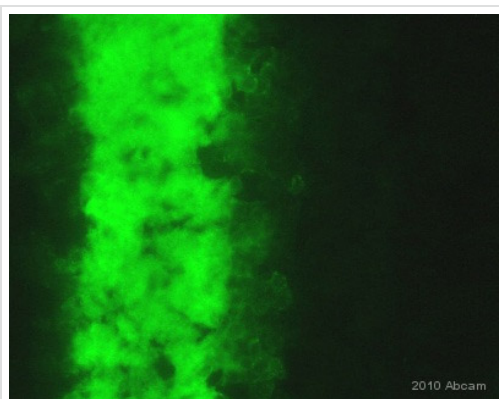
アプリケーション	Abreviews	特記事項
IHC-P		1/50 - 1/500.

アプリケーション	Abreviews	特記事項
IHC-Fr	★★★★★	1/50 - 1/500.
WB	★★★★☆	1/500. Detects a band of approximately 74 kDa (predicted molecular weight: 67 kDa).
IHC-FoFr		Use at an assay dependent concentration.

ターゲット情報

機能	Terminates the action of GABA by its high affinity sodium-dependent reuptake into presynaptic terminals.
配列類似性	Belongs to the sodium:neurotransmitter symporter (SNF) (TC 2.A.22) family. SLC6A1 subfamily.
ドメイン	The PDZ domain-binding motif is involved in the interaction with MPP5.
細胞内局在	Cell membrane. Membrane. Localized at the plasma membrane and in a subset of intracellular vesicles. Localized at the presynaptic terminals of interneurons.

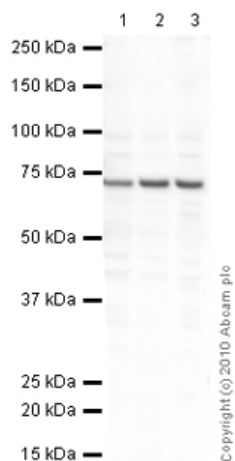
画像



Immunohistochemistry (Frozen sections) - Anti-GABA Transporter 1 / GAT 1 antibody (ab426)

This image is courtesy of an Abreview submitted by Kevin Jin

ab426 staining the GABA transporter 1 in Mouse retinal tissue sections by Immunohistochemistry (IHC-Fr - frozen sections). Tissue was fixed with paraformaldehyde, and blocked with 5% serum for 1 hour at 20°C. Samples were incubated with primary antibody (1/2000 in PBST) for 12 hours at 4°C. An Alexa Fluor®488-conjugated Donkey anti-rabbit polyclonal (1/1000) was used as the secondary antibody.



Western blot - Anti-GABA Transporter 1 / GAT 1 antibody (ab426)

All lanes : Anti-GABA Transporter 1 / GAT 1 antibody (ab426) at 1 µg/ml

Lane 1 : Rat Hippocampus Tissue Lysate

Lane 2 : Spinal Cord (Rat) Tissue Lysate

Lane 3 : Brain (Rat) Tissue Lysate

Lysates/proteins at 10 µg per lane.

Secondary

All lanes : Goat polyclonal Secondary Antibody to Rabbit IgG - H&L (HRP), pre-adsorbed at 1/3000 dilution

Developed using the ECL technique.

Performed under reducing conditions.

Predicted band size: 67 kDa

Observed band size: 74 kDa

Exposure time: 30 seconds

GABA Transporter 1/ GAT 1 contains a number of potential glycosylation sites (SwissProt) which may explain its migration at a higher molecular weight than predicted.

Please note: All products are "FOR RESEARCH USE ONLY AND ARE NOT INTENDED FOR DIAGNOSTIC OR THERAPEUTIC USE"

Our Abpromise to you: Quality guaranteed and expert technical support

- Replacement or refund for products not performing as stated on the datasheet
- Valid for 12 months from date of delivery
- Response to your inquiry within 24 hours
- We provide support in Chinese, English, French, German, Japanese and Spanish
- Extensive multi-media technical resources to help you
- We investigate all quality concerns to ensure our products perform to the highest standards

If the product does not perform as described on this datasheet, we will offer a refund or replacement. For full details of the Abpromise, please visit <https://www.abcam.co.jp/abpromise> or contact our technical team.

Terms and conditions

- Guarantee only valid for products bought direct from Abcam or one of our authorized distributors