

Product datasheet

Anti-Flotillin 1 antibody ab41927

KO 評価済

★★★★☆ 10 Abreviews 21 References 画像数 7

製品の概要

製品名	Anti-Flotillin 1 antibody
製品の詳細	Rabbit polyclonal to Flotillin 1
由来種	Rabbit
特異性	This target has been reported to show both cytoplasmic and nuclear localisation (PMID: 15713644).
アプリケーション	適用あり: IHC-P, ICC/IF, WB, IP
種交差性	交差種: Mouse, Rat, Dog, Human 交差が予測される動物種: a wide range of other species
免疫原	Synthetic peptide conjugated to KLH derived from within residues 1 - 100 of Human Flotillin 1. Immunogen の所有権に関して (Peptide available as ab41926 .)
ポジティブ・コントロール	ab41927 gave a positive result in Human Lung tissue lysate, Human Brain tissue lysate and HeLa whole cell lysate.

製品の特性

製品の状態	Liquid
保存方法	Shipped at 4°C. Store at +4°C short term (1-2 weeks). Upon delivery aliquot. Store at -20°C or -80°C. Avoid freeze / thaw cycle.
バッファー	Preservative: 0.02% Sodium Azide Constituents: 1% BSA, PBS, pH 7.4
精製度	Immunogen affinity purified
ポリ/モノ	ポリクローナル
アイソタイプ	IgG

アプリケーション

Our [Abpromise guarantee](#) covers the use of **ab41927** in the following tested applications.

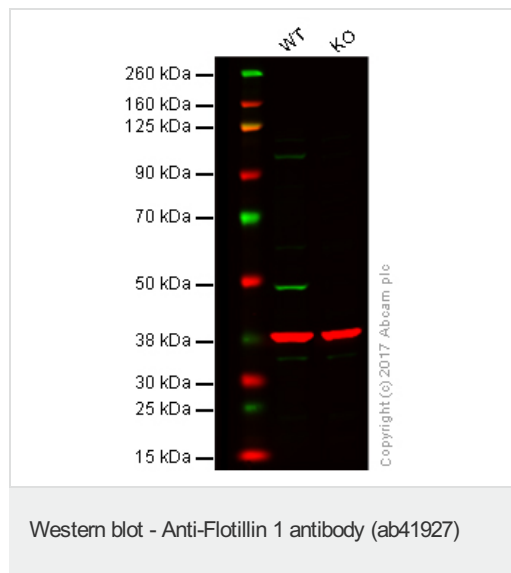
The application notes include recommended starting dilutions; optimal dilutions/concentrations should be determined by the end user.

アプリ ケーション	Abreviews	特記事項
IHC-P	★★★★★	1/100. Perform heat mediated antigen retrieval before commencing with IHC staining protocol.
ICC/IF	★★★★☆	1/200. Fix cells with methanol
WB	★★★★☆	Use a concentration of 1 µg/ml. Detects a band of approximately 47 kDa (predicted molecular weight: 47 kDa). Can be blocked with Human Flotillin 1 peptide (ab41926) .
IP	★★★★☆	Use at an assay dependent concentration.

ターゲット情報

機能	May act as a scaffolding protein within caveolar membranes, functionally participating in formation of caveolae or caveolae-like vesicles.
配列類似性	Belongs to the band 7/mec-2 family. Flotillin subfamily.
細胞内局在	Cell membrane. Membrane > caveola. Melanosome. Endosome. Membrane-associated protein of caveolae. Identified by mass spectrometry in melanosome fractions from stage I to stage IV.

画像

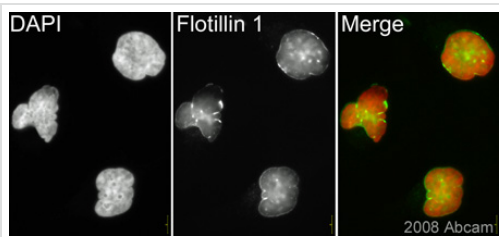


Lane 1: Wild-type HAP1 whole cell lysate (20 µg)

Lane 2: Flotillin 1 knockout HAP1 whole cell lysate (20 µg)

Lanes 1 - 4: Merged signal (red and green). Green - ab41927 observed at 47 kDa. Red - loading control, [ab9484](#), observed at 37 kDa.

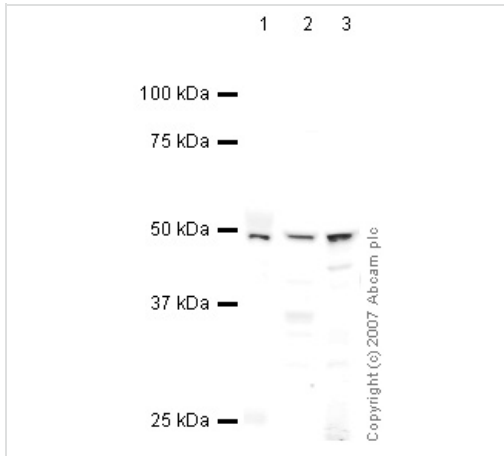
ab41927 was shown to specifically react with Flotillin 1 in wild-type HAP1 cells as signal was lost in Flotillin 1 knockout cells. Wild-type and Flotillin 1 knockout samples were subjected to SDS-PAGE. ab41927 and [ab9484](#) (Mouse anti-GAPDH loading control) were incubated overnight at 4°C at 1 µg/ml and 1/20000 dilution respectively. Blots were developed with Goat anti-Rabbit IgG H&L (IRDye® 800CW) preabsorbed [ab216773](#) and Goat anti-Mouse IgG H&L (IRDye® 680RD) preabsorbed [ab216776](#) secondary antibodies at 1/20000 dilution for 1 hour at room temperature before imaging.



Immunocytochemistry/ Immunofluorescence - Anti-Flotillin 1 antibody (ab41927)

This image is part of an abreview submitted by Dr. Kirk McManus

ab41927 (1/200) staining Flotillin 1 in HeLa cells (green). Cells were fixed with Methanol and counterstained with DAPI in order to highlight the nucleus (red). Please refer to abreview for further experimental details.



Western blot - Anti-Flotillin 1 antibody (ab41927)

All lanes : Anti-Flotillin 1 antibody (ab41927) at 1 µg/ml

Lane 1 : Lung (Human) Tissue Lysate

Lane 2 : HeLa (Human epithelial carcinoma cell line) Whole Cell Lysate

Lane 3 : Human brain tissue lysate - total protein ([ab29466](#))

Lysates/proteins at 10 µg per lane.

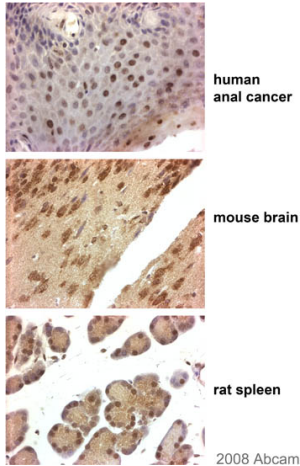
Secondary

All lanes : IRDye 680 Conjugated Goat Anti-Rabbit IgG (H+L) at 1/10000 dilution

Performed under reducing conditions.

Predicted band size: 47 kDa

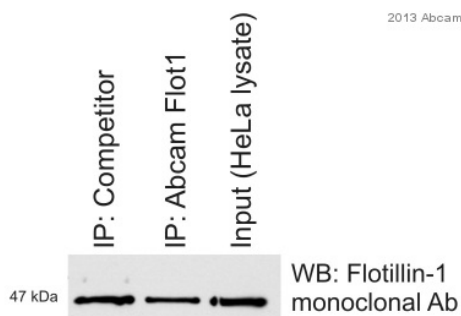
Observed band size: 47 kDa



Immunohistochemistry (Formalin/PFA-fixed paraffin-embedded sections) - Anti-Flotillin 1 antibody (ab41927)

This image is courtesy of an Abreview submitted by Antibody Solutions Ltd.

ab41927 (1/100) staining Flotillin 1 in paraffin embedded - Human (anal cancer), Mouse (brain) and Rat (spleen) tissues. Tissue sections underwent paraformaldehyde fixation, heat mediated antigen retrieval using Citrate Buffer pH 6.0 and were blocked using sequential peroxidase and protein block (prediluted). Please refer to abreview for further experimental details.



Immunoprecipitation - Anti-Flotillin 1 antibody (ab41927)

This image is courtesy of an Abreview submitted by Prof Ritva Tikkanen

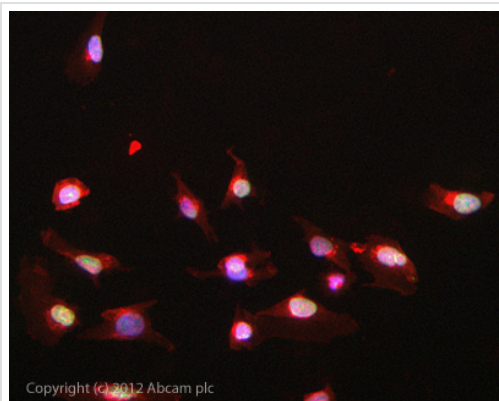
Flotillin 1 immunoprecipitation from Human HeLa whole cell lysate using ab41927. 750 μ g of cell lysate was incubated with primary antibody (1/500) and matrix (Protein A) and incubated for 16 hours at 4°C.

Lane 1 : anti-Flotillin 2 IP (using non-Abcam antibody)

Lane 2 : anti-Flotillin 2 IP (using ab41927)

Lane 3 : Input (HeLa cell lysate)

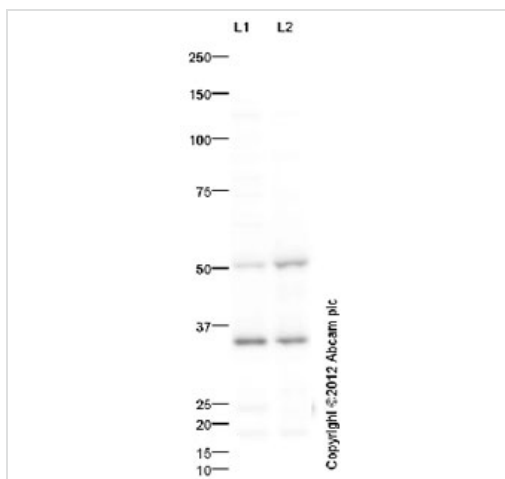
Western blot detection : mouse anti-Flotillin 1 antibody + HRP donkey anti-mouse polyclonal secondary antibody



Copyright © 2012 Abcam plc

Immunocytochemistry/ Immunofluorescence - Anti-Flotillin 1 antibody (ab41927)

ICC/IF image of ab41927 stained HeLa cells. The cells were 4% formaldehyde fixed (10 min) and then incubated in 1%BSA / 10% normal goat serum / 0.3M glycine in 0.1% PBS-Tween for 1h to permeabilise the cells and block non-specific protein-protein interactions. The cells were then incubated with the antibody ab41927 at 1µg/ml overnight at +4°C. The secondary antibody (green) was DyLight® 488 goat anti- rabbit ([ab96899](#)) IgG (H+L) used at a 1/1000 dilution for 1h. Alexa Fluor® 594 WGA was used to label plasma membranes (red) at a 1/200 dilution for 1h. DAPI was used to stain the cell nuclei (blue) at a concentration of 1.43µM.



Western blot - Anti-Flotillin 1 antibody (ab41927)

All lanes : Anti-Flotillin 1 antibody (ab41927) at 1 µg/ml

Lane 1 : HeLa (Human epithelial carcinoma cell line) Whole Cell Lysate

Lane 2 : Human brain tissue lysate - total protein ([ab29466](#))

Lysates/proteins at 10 µg per lane.

Secondary

All lanes : Goat polyclonal to Rabbit IgG - H&L - Pre-Adsorbed (HRP) ([ab65484](#)) at 1/3000 dilution

Developed using the ECL technique.

Performed under reducing conditions.

Predicted band size: 47 kDa

Observed band size: 50 kDa

[why is the actual band size different from the predicted?](#)

Additional bands at: 35 kDa. We are unsure as to the identity of these extra bands.

Exposure time: 4 minutes

Please note: All products are "FOR RESEARCH USE ONLY AND ARE NOT INTENDED FOR DIAGNOSTIC OR THERAPEUTIC USE"

Our Abpromise to you: Quality guaranteed and expert technical support

- Replacement or refund for products not performing as stated on the datasheet
- Valid for 12 months from date of delivery
- Response to your inquiry within 24 hours

- We provide support in Chinese, English, French, German, Japanese and Spanish
- Extensive multi-media technical resources to help you
- We investigate all quality concerns to ensure our products perform to the highest standards

If the product does not perform as described on this datasheet, we will offer a refund or replacement. For full details of the Abpromise, please visit <https://www.abcam.co.jp/abpromise> or contact our technical team.

Terms and conditions

- Guarantee only valid for products bought direct from Abcam or one of our authorized distributors