


Product datasheet

Anti-FIGNL1 antibody ab70841

画像数 2

製品の概要

製品名	Anti-FIGNL1 antibody
製品の詳細	Rabbit polyclonal to FIGNL1
由来種	Rabbit
アプリケーション	適用あり: WB, IP
種交差性	交差種: Mouse, Human 交差が予測される動物種: Rabbit, Chimpanzee, Rhesus monkey, Gorilla, Orangutan, Elephant 
免疫原	Synthetic peptide, corresponding to a region between amino acids 1-50 of Human FIGNL1 (NP_071399.2)
ポジティブ・コントロール	Whole cell lysate from HeLa, 293T and mouse NIH3T3 cells

製品の特性

製品の状態	Liquid
保存方法	Shipped at 4°C. Upon delivery aliquot and store at -20°C. Avoid freeze / thaw cycles.
バッファー	Preservative: 0.09% Sodium azide Constituents: 1.815% Tris, 1.764% Sodium citrate, 0.021% PBS
精製度	Immunogen affinity purified
ポリ/モノ	ポリクローナル
アイソタイプ	IgG

アプリケーション

Our [Abpromise guarantee](#) covers the use of **ab70841** in the following tested applications.

The application notes include recommended starting dilutions; optimal dilutions/concentrations should be determined by the end user.

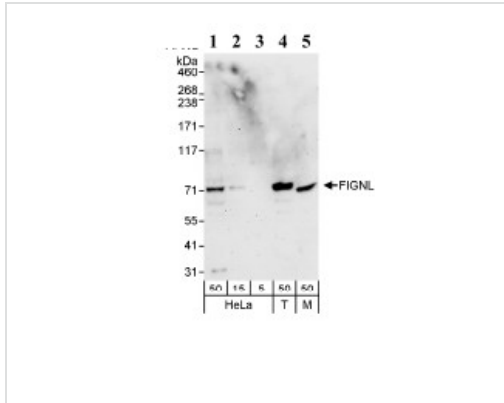
アプリケーション	Abreviews	特記事項
WB		1/1000 - 1/5000. Detects a band of approximately 71 kDa (predicted molecular weight: 74 kDa).
IP		Use at 2-5 µg/mg of lysate.

## ターゲット情報

### 関連性

May regulate osteoblast proliferation and differentiation.

### 画像



Western blot - Anti-FIGNL1 antibody (ab70841)

**All lanes :** Anti-FIGNL1 antibody (ab70841)  
at 1  $\mu$ g/ml

**Lane 1 :** Whole cell lysate from HeLa cells at  
50  $\mu$ g

**Lane 2 :** Whole cell lysate from HeLa cells at  
15  $\mu$ g

**Lane 3 :** Whole cell lysate from HeLa cells at  
5  $\mu$ g

**Lane 4 :** Whole cell lysate from 293T cells at  
50  $\mu$ g

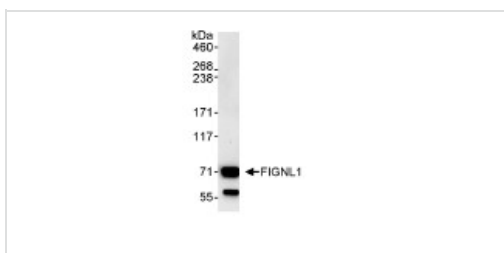
**Lane 5 :** Whole cell lysate from NIH3T3 cells  
at 50  $\mu$ g

Developed using the ECL technique.

**Predicted band size:** 74 kDa

**Observed band size:** 71 kDa

**Exposure time:** 3 minutes



Immunoprecipitation - Anti-FIGNL1 antibody  
(ab70841)

Detection of Human FIGNL1 by  
Immunoprecipitation in Whole cell lysate from  
HeLa (1 mg for IP, 20% of IP loaded), using  
ab70841 for IP at 3  $\mu$ g/mg lysate. Subsequent  
WB detection was performed using 1  $\mu$ g/mg  
ab70841 and chemiluminescence with an  
exposure time of 30 seconds.

**Please note:** All products are "FOR RESEARCH USE ONLY AND ARE NOT INTENDED FOR DIAGNOSTIC OR THERAPEUTIC USE"

**Our Abpromise to you: Quality guaranteed and expert technical support**

- Replacement or refund for products not performing as stated on the datasheet
- Valid for 12 months from date of delivery
- Response to your inquiry within 24 hours
  
- We provide support in Chinese, English, French, German, Japanese and Spanish
- Extensive multi-media technical resources to help you
- We investigate all quality concerns to ensure our products perform to the highest standards

If the product does not perform as described on this datasheet, we will offer a refund or replacement. For full details of the Abpromise, please visit <https://www.abcam.co.jp/abpromise> or contact our technical team.

### **Terms and conditions**

---

- Guarantee only valid for products bought direct from Abcam or one of our authorized distributors