

Product datasheet

Anti-FCRL3 antibody ab121471

画像数 1

製品の概要

製品名	Anti-FCRL3 antibody
製品の詳細	Rabbit polyclonal to FCRL3
由来種	Rabbit
アプリケーション	適用あり: IHC-P
種交差性	交差種: Human
免疫原	antigen, corresponding to amino acids 602-725 of Human FCRL3.
ポジティブ・コントロール	Human cerebral cortex tissue.

製品の特性

製品の状態	Liquid
保存方法	Shipped at 4°C. Upon delivery aliquot and store at -20°C. Avoid repeated freeze / thaw cycles.
バッファー	pH: 7.20 Preservative: 0.02% Sodium azide Constituents: 59% PBS, 40% Glycerol
精製度	Immunogen affinity purified
ポリ/モノ	ポリクローナル
アイソタイプ	IgG

アプリケーション

Our [Abpromise guarantee](#) covers the use of **ab121471** in the following tested applications.

The application notes include recommended starting dilutions; optimal dilutions/concentrations should be determined by the end user.

アプリケーション	Abreviews	特記事項
IHC-P		1/20 - 1/50. Perform heat mediated antigen retrieval with citrate buffer pH 6 before commencing with IHC staining protocol.

ターゲット情報

組織特異性

Primarily expressed in secondary lymphoid tissues by mature subsets of B cells. Detected in spleen, lymph node, peripheral blood lymphocytes, thymus, bone marrow, kidney, salivary gland, adrenal gland and uterus. Expressed a low levels in naive, germinal center and memory B cells but also expressed in NK cells (at protein level).

関連疾患

Genetic variation in FCRL3 may be a cause of susceptibility to rheumatoid arthritis (RA) [MIM:180300]. It is a systemic inflammatory disease with autoimmune features and a complex genetic component. It primarily affects the joints and is characterized by inflammatory changes in the synovial membranes and articular structures, widespread fibrinoid degeneration of the collagen fibers in mesenchymal tissues, and by atrophy and rarefaction of bony structures. Genetic variation in FCRL3 may influence susceptibility to Graves disease, an autoimmune disorder associated with overactivity of the thyroid gland and hyperthyroidism.

配列類似性

Contains 6 Ig-like C2-type (immunoglobulin-like) domains.

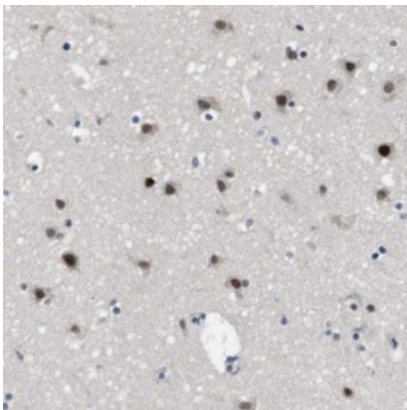
翻訳後修飾

Phosphorylated on cytoplasmic tyrosines; required for interaction with protein tyrosine phosphatases and protein tyrosine kinases.

細胞内局在

Cell membrane.

画像



ab121471, at 1/20 dilution, staining FCRL3 in paraffin-embedded Human cerebral cortex tissue, by Immunohistochemistry.

Immunohistochemistry (Formalin/PFA-fixed paraffin-embedded sections) - Anti-FCRL3 antibody (ab121471)

Please note: All products are "FOR RESEARCH USE ONLY AND ARE NOT INTENDED FOR DIAGNOSTIC OR THERAPEUTIC USE"

Our Abpromise to you: Quality guaranteed and expert technical support

- Replacement or refund for products not performing as stated on the datasheet
- Valid for 12 months from date of delivery
- Response to your inquiry within 24 hours
- We provide support in Chinese, English, French, German, Japanese and Spanish
- Extensive multi-media technical resources to help you
- We investigate all quality concerns to ensure our products perform to the highest standards

If the product does not perform as described on this datasheet, we will offer a refund or replacement. For full details of the Abpromise, please visit <https://www.abcam.co.jp/abpromise> or contact our technical team.

Terms and conditions

- Guarantee only valid for products bought direct from Abcam or one of our authorized distributors