

Product datasheet

Anti-Estrogen Receptor beta antibody [14C8] ab288

★★★★☆ 7 Abreviews 60 References 画像数 3

製品の概要

製品名	Anti-Estrogen Receptor beta antibody [14C8]
製品の詳細	Mouse monoclonal [14C8] to Estrogen Receptor beta
由来種	Mouse
特異性	14C8 is specific for human ER-beta. The antibody has been tested in WB against recombinant protein. It has not yet been tested in our laboratory using any cell lysates and several publications suggest it can give weak bands in breast tumour extracts lysate. Strong Erb staining in epithelial cell nuclei. Occasional weak to moderate staining is seen in surrounding stromal and endothelial cell nuclei. Sporadic light cytoplasmic staining is sometimes observed. We have also successfully detected ERb in colon and ovarian tumors using the same antibody.
アプリケーション	適用あり: WB, Flow Cyt, IHC-P, ICC/IF, ChIP, IHC-Fr
種交差性	交差種: Mouse, Human, Monkey, Baboon
免疫原	Recombinant 6-His fusion protein encoding amino acids 1-153 of human ER-beta expressed in <i>E. coli</i> .
ポジティブ・コントロール	WB: Recombinant fusion protein. IHC-P: endocervical epithelium, Lobular breast carcinoma.

製品の特性

製品の状態	Liquid
保存方法	Shipped at 4°C. Upon delivery aliquot and store at -20°C or -80°C. Avoid repeated freeze / thaw cycles.
バッファー	pH: 7.40 Constituent: 0.0268% PBS
精製度	Immunogen affinity purified
ポリ/モノ	モノクローナル
クローン名	14C8
ミエローマ	NS1
アイソタイプ	IgG2b
軽鎖の種類	kappa

アプリケーション

Our [Abpromise guarantee](#) covers the use of **ab288** in the following tested applications.

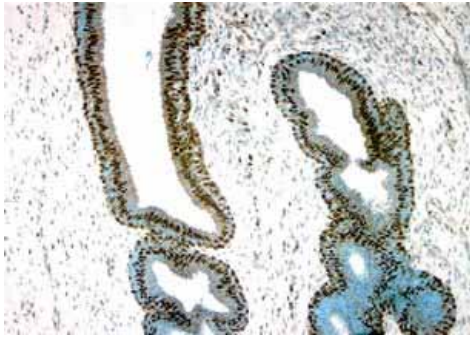
The application notes include recommended starting dilutions; optimal dilutions/concentrations should be determined by the end user.

アプリケーション	Abreviews	特記事項
WB	★★★★☆	Use a concentration of 1 - 5 µg/ml. Predicted molecular weight: 59 kDa.
Flow Cyt		1/25. ab170192 - Mouse monoclonal IgG2b, is suitable for use as an isotype control with this antibody.
IHC-P	★★★★☆	Use a concentration of 5 µg/ml.
ICC/IF		Use at an assay dependent concentration.
ChIP		Use at an assay dependent concentration.
IHC-Fr	★★★★☆	Use at an assay dependent concentration.

ターゲット情報

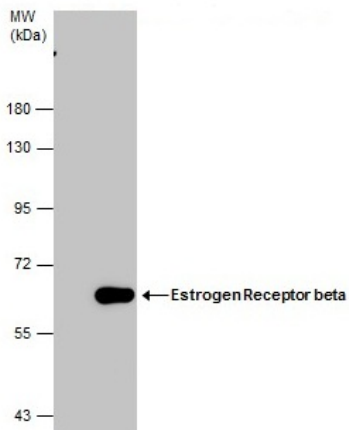
機能	Nuclear hormone receptor. Binds estrogens with an affinity similar to that of ESR1, and activates expression of reporter genes containing estrogen response elements (ERE) in an estrogen-dependent manner. Isoform beta-cx lacks ligand binding ability and has no or only very low ere binding activity resulting in the loss of ligand-dependent transactivation ability. DNA-binding by ESR1 and ESR2 is rapidly lost at 37 degrees Celsius in the absence of ligand while in the presence of 17 beta-estradiol and 4-hydroxy-tamoxifen loss in DNA-binding at elevated temperature is more gradual.
組織特異性	Isoform beta-1 is expressed in testis and ovary, and at a lower level in heart, brain, placenta, liver, skeletal muscle, spleen, thymus, prostate, colon, bone marrow, mammary gland and uterus. Also found in uterine bone, breast, and ovarian tumor cell lines, but not in colon and liver tumors. Isoform beta-2 is expressed in spleen, thymus, testis and ovary and at a lower level in skeletal muscle, prostate, colon, small intestine, leukocytes, bone marrow, mammary gland and uterus. Isoform beta-3 is found in testis. Isoform beta-4 is expressed in testis, and at a lower level in spleen, thymus, ovary, mammary gland and uterus. Isoform beta-5 is expressed in testis, placenta, skeletal muscle, spleen and leukocytes, and at a lower level in heart, lung, liver, kidney, pancreas, thymus, prostate, colon, small intestine, bone marrow, mammary gland and uterus. Not expressed in brain.
配列類似性	Belongs to the nuclear hormone receptor family. NR3 subfamily. Contains 1 nuclear receptor DNA-binding domain.
ドメイン	Composed of three domains: a modulating N-terminal domain, a DNA-binding domain and a C-terminal ligand-binding domain.
細胞内局在	Nucleus.

画像



Immunohistochemistry (Formalin/PFA-fixed paraffin-embedded sections) - Anti-Estrogen Receptor beta antibody [14C8] (ab288)

ab288 staining endocervical epithelium by IHC-P.



Western blot - Anti-Estrogen Receptor beta antibody [14C8] (ab288)

All lanes : Anti-Estrogen Receptor beta antibody [14C8] (ab288) at 1/5000 dilution

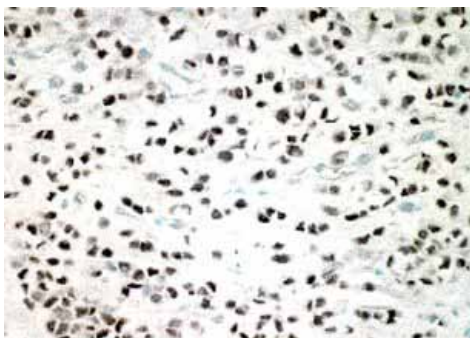
Lane 1 : Non-transfected 293T whole cell extracts

Lane 2 : Transfected 293T whole cell extracts

Lysates/proteins at 30 µg per lane.

Performed under non-reducing conditions.

Predicted band size: 59 kDa



Immunohistochemistry (Formalin/PFA-fixed paraffin-embedded sections) - Anti-Estrogen Receptor beta antibody [14C8] (ab288)

ab288 staining infiltrating lobular carcinoma of the breast by IHC-P.

Please note: All products are "FOR RESEARCH USE ONLY AND ARE NOT INTENDED FOR DIAGNOSTIC OR THERAPEUTIC USE"

Our Abpromise to you: Quality guaranteed and expert technical support

- Replacement or refund for products not performing as stated on the datasheet
- Valid for 12 months from date of delivery
- Response to your inquiry within 24 hours

- We provide support in Chinese, English, French, German, Japanese and Spanish
- Extensive multi-media technical resources to help you
- We investigate all quality concerns to ensure our products perform to the highest standards

If the product does not perform as described on this datasheet, we will offer a refund or replacement. For full details of the Abpromise, please visit <https://www.abcam.co.jp/abpromise> or contact our technical team.

Terms and conditions

- Guarantee only valid for products bought direct from Abcam or one of our authorized distributors