

## Product datasheet

# Anti-Eph receptor A2 antibody [EPR4761] ab110716

リコンビナント RabMAb®

### 画像数 1

#### 製品の概要

製品名	Anti-Eph receptor A2 antibody [EPR4761]
製品の詳細	Rabbit monoclonal [EPR4761] to Eph receptor A2
由来種	Rabbit
アプリケーション	<b>適用あり:</b> WB <b>適用なし:</b> Flow Cyt, ICC, IHC-P or IP
種交差性	<b>交差種:</b> Human
免疫原	Synthetic peptide within Human Eph receptor A2 aa 950-1050 (C terminal). The exact sequence is proprietary.
ポジティブ・コントロール	A431, 293T, SH SY5Y, and BxPC3 cell lysates.
特記事項	Mouse, Rat: We have preliminary internal testing data to indicate this antibody may not react with these species. Please contact us for more information.

Our RabMAb® technology is a patented hybridoma-based technology for making rabbit monoclonal antibodies. For details on our patents, please refer to [RabMAb® patents](#)

This product is a recombinant rabbit monoclonal antibody.

#### 製品の特性

製品の状態	Liquid
保存方法	Shipped at 4°C. Store at -20°C. Stable for 12 months at -20°C.
バッファー	pH: 7.20 Preservative: 0.05% Sodium azide Constituents: 0.1% BSA, 40% Glycerol, 9.85% Tris glycine, 50% Tissue culture supernatant
精製度	Tissue culture supernatant
ポリ/モノ	モノクローナル
クローン名	EPR4761
アイソタイプ	IgG

## アプリケーション

Our [Abpromise guarantee](#) covers the use of **ab110716** in the following tested applications.

The application notes include recommended starting dilutions; optimal dilutions/concentrations should be determined by the end user.

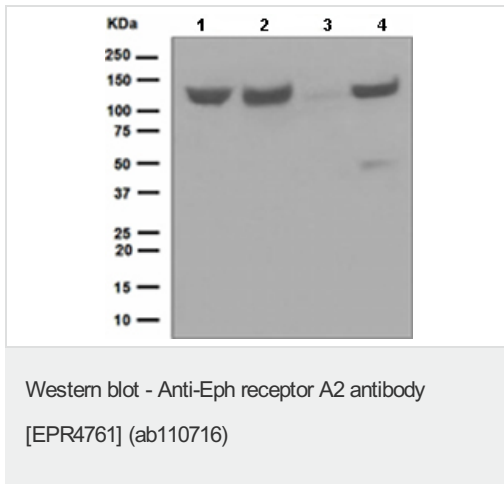
アプリケーション	Abreviews	特記事項
WB		1/1000 - 1/10000. Predicted molecular weight: 108 kDa.

**追加情報** Is unsuitable for Flow Cyt, ICC, IHC-P or IP.

## ターゲット情報

<b>機能</b>	Receptor for members of the ephrin-A family. Binds to ephrin-A1, -A3, -A4 and -A5. Plays an important role in angiogenesis and tumor neovascularization. The recruitment of VAV2, VAV3 and PI3-kinase p85 subunit by phosphorylated EPHA2 is critical for EFNA1-induced RAC1 GTPase activation and vascular endothelial cell migration and assembly (By similarity). Induces apoptosis in a p53/TP53-independent, caspase-8-dependent manner.
<b>組織特異性</b>	Expressed in brain and glioma tissue and glioma cell lines (at protein level). Expressed most highly in tissues that contain a high proportion of epithelial cells, e.g., skin, intestine, lung, and ovary.
<b>関連疾患</b>	<p>Genetic variations in EPHA2 are the cause of susceptibility to cataract cortical age-related type 2 (ARCC2) [MIM:613020]. A developmental punctate opacity common in the cortex and present in most lenses. The cataract is white or cerulean, increases in number with age, but rarely affects vision.</p> <p>Defects in EPHA2 are the cause of cataract posterior polar type 1 (CTPP1) [MIM:116600]. A subcapsular opacity, usually disk-shaped, located at the back of the lens. It can have a marked effect on visual acuity.</p>
<b>配列類似性</b>	<p>Belongs to the protein kinase superfamily. Tyr protein kinase family. Ephrin receptor subfamily. Contains 2 fibronectin type-III domains.</p> <p>Contains 1 protein kinase domain.</p> <p>Contains 1 SAM (sterile alpha motif) domain.</p>
<b>翻訳後修飾</b>	Activated by EFNA1 via tyrosine phosphorylation. Phosphorylated residues Tyr-588 and Tyr-594 are required for binding VAV2 and VAV3 while phosphorylated residues Tyr-735 and Tyr-930 are required for binding PI3-kinase p85 subunit. These phosphorylated residues are critical for recruitment of VAV2 and VAV3 and PI3-kinase p85 subunit which transduce downstream signaling to activate RAC1 GTPase and endothelial cell migration. They also play a critical role in transducing EPHA2 signaling in vascular endothelial cells during tumor angiogenesis.
<b>細胞内局在</b>	Membrane.

## 画像



**All lanes :** Anti-Eph receptor A2 antibody  
[EPR4761] (ab110716) at 1/1000 dilution

**Lane 1 :** A431 cell lysate

**Lane 2 :** 293T cell lysate

**Lane 3 :** SH SY5Y cell lysate

**Lane 4 :** BxPC3 cell lysate

Lysates/proteins at 10 µg per lane.

**Predicted band size:** 108 kDa

**Please note:** All products are "FOR RESEARCH USE ONLY AND ARE NOT INTENDED FOR DIAGNOSTIC OR THERAPEUTIC USE"

### Our Abpromise to you: Quality guaranteed and expert technical support

- Replacement or refund for products not performing as stated on the datasheet
- Valid for 12 months from date of delivery
- Response to your inquiry within 24 hours
- We provide support in Chinese, English, French, German, Japanese and Spanish
- Extensive multi-media technical resources to help you
- We investigate all quality concerns to ensure our products perform to the highest standards

If the product does not perform as described on this datasheet, we will offer a refund or replacement. For full details of the Abpromise, please visit <https://www.abcam.co.jp/abpromise> or contact our technical team.

### Terms and conditions

- Guarantee only valid for products bought direct from Abcam or one of our authorized distributors