

Product datasheet

Anti-EEA1 antibody [mAbcam18175] ab18175

★★★★☆ 5 Abreviews 3 References 画像数 3

製品の概要

製品名	Anti-EEA1 antibody [mAbcam18175]
製品の詳細	Mouse monoclonal [mAbcam18175] to EEA1
由来種	Mouse
アプリケーション	適用あり: WB, Flow Cyt
種交差性	交差種: Mouse, Human 交差が予測される動物種: Rat, Chicken, Cow, Dog, Chimpanzee, Zebrafish ▲
免疫原	Synthetic peptide derived from within residues 1350 to the C-terminus of Human EEA1. Immunogen の所有権に関して (Peptide available as ab14946 .)
ポジティブ・コントロール	This antibody gave a positive signal in HeLa cells in Flow Cytometry.
特記事項	This antibody clone is manufactured by Abcam.

If you require this antibody in a particular buffer formulation or a particular conjugate for your experiments, please contact orders@abcam.com or you can find further information [here](#).

製品の特性

製品の状態	Liquid
保存方法	Shipped at 4°C. Store at +4°C short term (1-2 weeks). Upon delivery aliquot. Store at -20°C or -80°C. Avoid freeze / thaw cycle.
バッファー	Preservative: 0.02% Sodium Azide Constituents: PBS, pH 7.5
精製度	IgG fraction
ポリ/モノ	モノクローナル
クローン名	mAbcam18175
アイソタイプ	IgG2b
軽鎖の種類	kappa

アプリケーション

Our [Abpromise guarantee](#) covers the use of **ab18175** in the following tested applications.

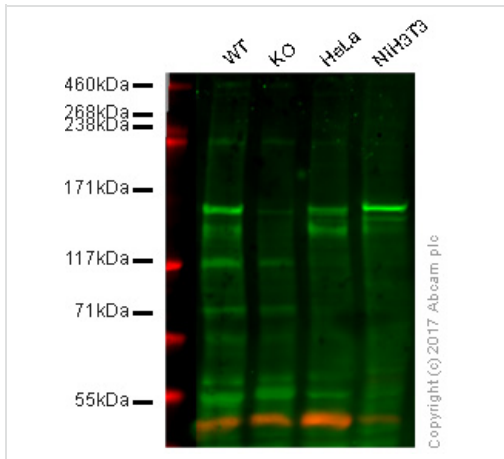
The application notes include recommended starting dilutions; optimal dilutions/concentrations should be determined by the end user.

アプリケーション	Abreviews	特記事項
WB	★★★★☆	Use a concentration of 1 - 5 µg/ml. Detects a band of approximately 160 kDa (predicted molecular weight: 162 kDa). Can be blocked with Human EEA1 peptide (ab14946) .
Flow Cyt		Use 1µg for 10 ⁶ cells. ab170192 - Mouse monoclonal IgG2b, is suitable for use as an isotype control with this antibody.

ターゲット情報

機能	Binds phospholipid vesicles containing phosphatidylinositol 3-phosphate and participates in endosomal trafficking.
配列類似性	Contains 1 C2H2-type zinc finger. Contains 1 FYVE-type zinc finger.
ドメイン	The FYVE-type zinc finger domain mediates interactions with phosphatidylinositol 3-phosphate in membranes of early endosomes and penetrates bilayers. The FYVE domain insertion into PtdIns(3)P-enriched membranes is substantially increased in acidic conditions.
細胞内局在	Cytoplasm. Early endosome membrane.

画像



Western blot - Anti-EEA1 antibody [mAbcam18175] (ab18175)

Lane 1: Wild-type HAP1 whole cell lysate (20 μ g)

Lane 2: EEA1 knockout HAP1 whole cell lysate (20 μ g)

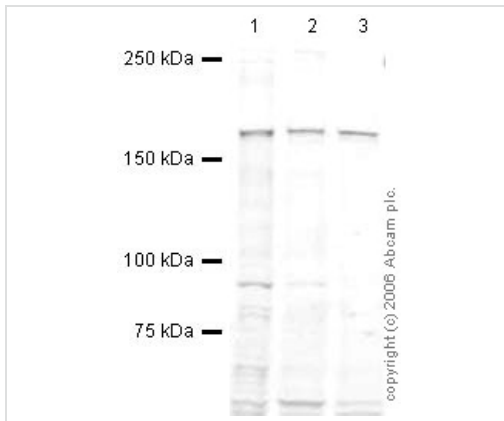
Lane 3: HeLa whole cell lysate (20 μ g)

Lane 4: NIH3T3 whole cell lysate (20 μ g)

Lanes 1 - 4: Merged signal (red and green).

Green - ab18175 observed at 162 kDa. Red - loading control, [ab176560](#), observed at 50 kDa.

ab18175 was found to be non-specific when EEA1 knockout samples were used. Wild-type and EEA1 knockout samples were subjected to SDS-PAGE. Ab18175 and [ab176560](#) (Rabbit anti alpha-Tubulin loading control) were incubated overnight at 4°C at 1 μ g/ml and 1/20000 dilution respectively. Blots were developed with Goat anti-Mouse IgG H&L (IRDye® 800CW) preabsorbed [ab216772](#) and Goat anti-Rabbit IgG H&L (IRDye® 680RD) preabsorbed [ab216777](#) secondary antibodies at 1/10000 dilution for 1 hour at room temperature before imaging.



Western blot - Anti-EEA1 antibody [mAbcam18175] (ab18175)

All lanes : Anti-EEA1 antibody

[mAbcam18175] (ab18175) at 1 µg/ml

Lane 1 : HeLa whole cell lysate

Lane 2 : A431 whole cell lysate (ab7909)

Lane 3 : HEK293 whole cell lysate (ab7902)

Lysates/proteins at 20 µg per lane.

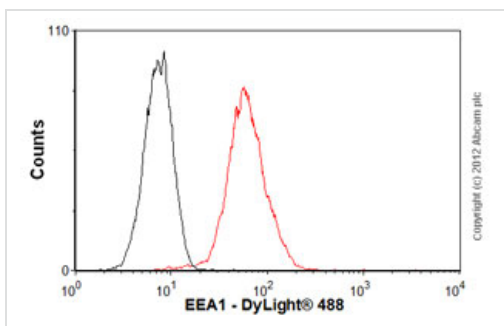
Secondary

All lanes : Rabbit Anti-Mouse IgG H&L (HRP)

(ab6728) at 1/10000 dilution

Performed under reducing conditions.

Predicted band size: 162 kDa



Flow Cytometry - Anti-EEA1 antibody [mAbcam18175] (ab18175)

Overlay histogram showing HeLa cells stained with ab18175 (red line). The cells were fixed with 4% paraformaldehyde (10 min) and then permeabilized with 0.1% PBS-Tween for 20 min. The cells were then incubated in 1x PBS / 10% normal goat serum / 0.3M glycine to block non-specific protein-protein interactions followed by the antibody (ab18175, 1µg/1x10⁶ cells) for 30 min at 22°C. The secondary antibody used was DyLight® 488 goat anti-mouse IgG (H+L) (ab96879) at 1/500 dilution for 30 min at 22°C. Isotype control antibody (black line) was mouse IgG2b [PLPV219] (ab91366, 2µg/1x10⁶ cells) used under the same conditions. Acquisition of >5,000 events was performed. This antibody gave a positive signal in HeLa cells fixed with 80% methanol (5 min)/permeabilized with 0.1% PBS-Tween for 20 min used under the same conditions.

Please note: All products are "FOR RESEARCH USE ONLY AND ARE NOT INTENDED FOR DIAGNOSTIC OR THERAPEUTIC USE"

Our Abpromise to you: Quality guaranteed and expert technical support

- Replacement or refund for products not performing as stated on the datasheet
- Valid for 12 months from date of delivery
- Response to your inquiry within 24 hours

- We provide support in Chinese, English, French, German, Japanese and Spanish
- Extensive multi-media technical resources to help you
- We investigate all quality concerns to ensure our products perform to the highest standards

If the product does not perform as described on this datasheet, we will offer a refund or replacement. For full details of the Abpromise, please visit <https://www.abcam.co.jp/abpromise> or contact our technical team.

Terms and conditions

- Guarantee only valid for products bought direct from Abcam or one of our authorized distributors