

## Product datasheet

# Anti-DUSP22 antibody ab70124

### 画像数 2

#### 製品の概要

---

製品名	Anti-DUSP22 antibody
製品の詳細	Rabbit polyclonal to DUSP22
由来種	Rabbit
特異性	ab70124 detects endogenous levels of total DUSP22 protein.
アプリケーション	<b>適用あり:</b> ICC/IF, WB, ELISA
種交差性	<b>交差種:</b> Mouse, Human
免疫原	Synthetic peptide derived from an internal sequence of human DUSP22.
ポジティブ・コントロール	Jurkat and RAW264.7 cell extracts.

#### 製品の特性

---

製品の状態	Liquid
保存方法	Shipped at 4°C. Store at -20°C. Stable for 12 months at -20°C.
バッファー	pH: 7.40 Preservative: 0.02% Sodium azide Constituents: 50% Glycerol, 0.87% Sodium chloride, PBS  Without Mg <sup>2+</sup> and Ca <sup>2+</sup>
精製度	Immunogen affinity purified
特記事項 (精製)	ab70124 was affinity-purified from rabbit antiserum by affinity-chromatography using epitope-specific immunogen.
ポリ/モノ	ポリクローナル
アイソタイプ	IgG

#### アプリケーション

---

Our [Abpromise guarantee](#) covers the use of **ab70124** in the following tested applications.

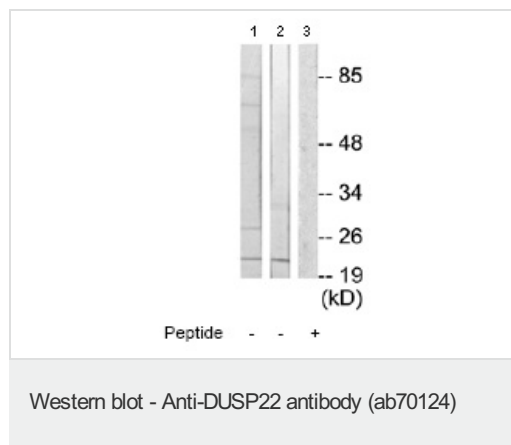
The application notes include recommended starting dilutions; optimal dilutions/concentrations should be determined by the end user.

アプリケーション	Abreviews	特記事項
ICC/IF		Use a concentration of 1 µg/ml.
WB		1/500 - 1/1000. Detects a band of approximately 20 kDa (predicted molecular weight: 20 kDa).
ELISA		1/5000.

## ターゲット情報

機能	Activates the Jnk signaling pathway. Dephosphorylates and deactivates p38 and stress-activated protein kinase/c-Jun N-terminal kinase (SAPK/JNK).
組織特異性	Ubiquitous. Highest expression seen in heart, placenta, lung, liver, kidney and pancreas.
配列類似性	Belongs to the protein-tyrosine phosphatase family. Non-receptor class dual specificity subfamily. Contains 1 tyrosine-protein phosphatase domain.
細胞内局在	Cytoplasm. Nucleus.

## 画像



**All lanes** : Anti-DUSP22 antibody (ab70124)  
at 1/500 dilution

**Lane 1** : Jurkat cell extracts

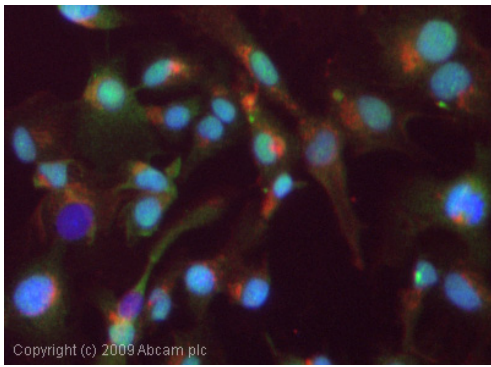
**Lane 2** : RAW264.7 cell extracts

**Lane 3** : RAW264.7 cell extracts with  
immunising peptide at 10 µg

Lysates/proteins at 30 µg per lane.

**Predicted band size:** 20 kDa

**Observed band size:** 20 kDa



Copyright (c) 2009 Abcam plc

Immunocytochemistry/ Immunofluorescence - Anti-DUSP22 antibody (ab70124)

ICC/IF image of ab70124 stained HepG2 cells. The cells were 100% methanol fixed (5 min) and then incubated in 1%BSA / 10% normal goat serum / 0.3M glycine in 0.1% PBS-Tween for 1h to permeabilise the cells and block non-specific protein-protein interactions. The cells were then incubated with the antibody (ab70124, 1 µg/ml) overnight at +4°C. The secondary antibody (green) was Alexa Fluor® 488 goat anti-rabbit IgG (H+L) used at a 1/1000 dilution for 1h. Alexa Fluor® 594 WGA was used to label plasma membranes (red) at a 1/200 dilution for 1h. DAPI was used to stain the cell nuclei (blue) at a concentration of 1.43µM.

**Please note:** All products are "FOR RESEARCH USE ONLY AND ARE NOT INTENDED FOR DIAGNOSTIC OR THERAPEUTIC USE"

### Our Abpromise to you: Quality guaranteed and expert technical support

- Replacement or refund for products not performing as stated on the datasheet
- Valid for 12 months from date of delivery
- Response to your inquiry within 24 hours
- We provide support in Chinese, English, French, German, Japanese and Spanish
- Extensive multi-media technical resources to help you
- We investigate all quality concerns to ensure our products perform to the highest standards

If the product does not perform as described on this datasheet, we will offer a refund or replacement. For full details of the Abpromise, please visit <https://www.abcam.co.jp/abpromise> or contact our technical team.

### Terms and conditions

- Guarantee only valid for products bought direct from Abcam or one of our authorized distributors