


## Product datasheet

# Anti-DDAH1 antibody ab82908

2 References [画像数 7](#)

### 製品の概要

製品名	Anti-DDAH1 antibody
製品の詳細	Rabbit polyclonal to DDAH1
由来種	Rabbit
アプリケーション	<b>適用あり:</b> IHC-P, WB, ICC/IF
種交差性	<b>交差種:</b> Human, Zebrafish <b>交差が予測される動物種:</b> Mouse, Rat, Rabbit, Horse, Chicken, Guinea pig, Cow, Cat, Dog 
免疫原	Synthetic peptide corresponding to a region within the internal sequence amino acids 107-156 (ALEKLQLNIV EMKDENATLD GGDVLFTGRE FFVGLSKRTN QRGAEILADT) of Human DDAH1 (NP_036269). <a href="#">Run BLAST with ExPASy</a> <a href="#">Run BLAST with NCBI</a>
ポジティブ・コントロール	Fetal liver lysate.

### 製品の特性

製品の状態	Liquid
保存方法	Shipped at 4°C. Upon delivery aliquot and store at -20°C. Avoid freeze / thaw cycles.
バッファー	Preservative: 0.09% Sodium azide Constituents: 2% Sucrose, PBS
精製度	Immunogen affinity purified
ポリ/モノ	ポリクローナル
アイソタイプ	IgG

### アプリケーション

Our [Abpromise guarantee](#) covers the use of **ab82908** in the following tested applications.

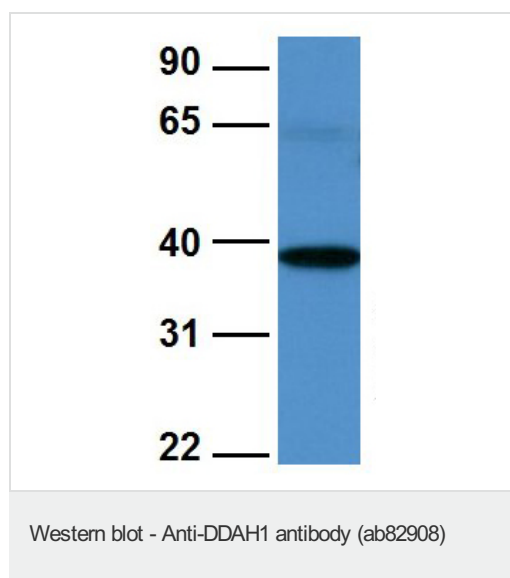
The application notes include recommended starting dilutions; optimal dilutions/concentrations should be determined by the end user.

アプリ ケーション	Abreviews	特記事項
IHC-P		Use a concentration of 2.5 µg/ml.
WB		Use a concentration of 1 µg/ml. Detects a band of approximately 37 kDa (predicted molecular weight: 31 kDa). Good results were obtained when blocked with 5% non-fat dry milk in 0.05% PBS-T.
ICC/IF		Use a concentration of 5 µg/ml.

## ターゲット情報

機能	Hydrolyzes N(G),N(G)-dimethyl-L-arginine (ADMA) and N(G)-monomethyl-L-arginine (MMA) which act as inhibitors of NOS. Has therefore a role in the regulation of nitric oxide generation.
組織特異性	Detected in brain, liver, kidney and pancreas, and at low levels in skeletal muscle.
配列類似性	Belongs to the DDAH family.

## 画像



Western blot analysis of Human fetal brain tissue lysate labeling DDAH1 with ab82908 at 1.0µg/ml

90 kDa\_\_  
65 kDa\_\_  
40 kDa\_\_  
31 kDa\_\_  
22 kDa\_\_



Western blot - Anti-DDAH1 antibody (ab82908)

Anti-DDAH1 antibody (ab82908) at 1  $\mu\text{g/ml}$   
(5% skim milk / PBS buffer) + fetal liver lysate  
at 10  $\mu\text{g}$

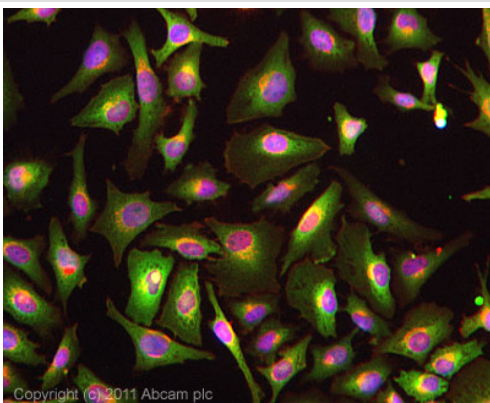
#### Secondary

HRP conjugated anti-Rabbit IgG at 1/50000  
dilution

**Predicted band size:** 31 kDa

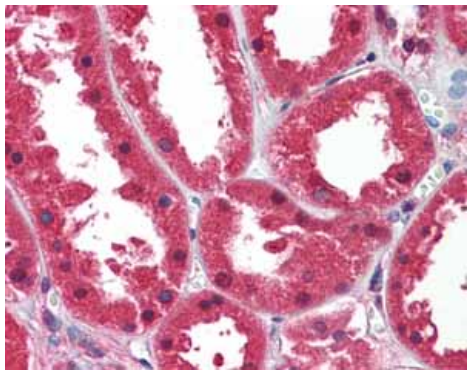
**Observed band size:** 37 kDa

Gel concentration 12%



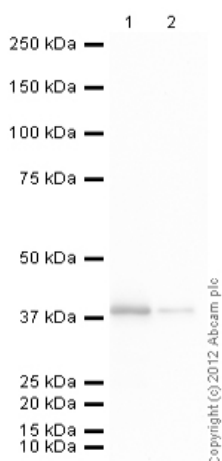
Immunocytochemistry/ Immunofluorescence - Anti-DDAH1 antibody (ab82908)

ICC/IF image of ab82908 stained HeLa cells. The cells were 4% formaldehyde fixed (10 min) and then incubated in 1%BSA / 10% normal goat serum / 0.3M glycine in 0.1% PBS-Tween for 1h to permeabilise the cells and block non-specific protein-protein interactions. The cells were then incubated with the antibody (ab82908, 5 $\mu\text{g/ml}$ ) overnight at +4°C. The secondary antibody (green) was [ab96899](#), DyLight® 488 goat anti-rabbit IgG (H+L) used at a 1/250 dilution for 1h. Alexa Fluor® 594 WGA was used to label plasma membranes (red) at a 1/200 dilution for 1h. DAPI was used to stain the cell nuclei (blue) at a concentration of 1.43 $\mu\text{M}$ .

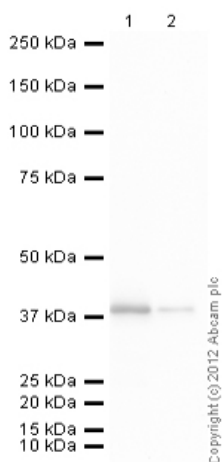


Immunohistochemistry (Formalin/PFA-fixed paraffin-embedded sections) analysis of human kidney tissue labelling DDAH1 with ab82908 at 2.5 µg/ml.

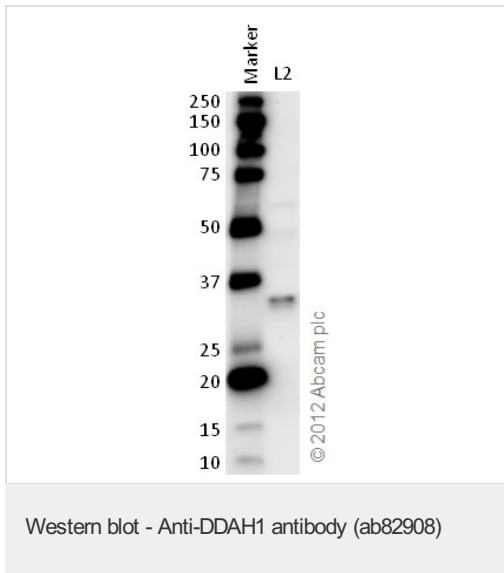
Immunohistochemistry (Formalin/PFA-fixed paraffin-embedded sections) - Anti-DDAH1 antibody (ab82908)



Western blot



Western blot - Anti-DDAH1 antibody (ab82908)



**All lanes :** Anti-DDAH1 antibody (ab82908)  
at 1 µg/ml

**Lane 1 :** Marker

**Lane 2 :** Zebrafish brain homogenate at 20 µg/ml

**Secondary**

**All lanes :** Goat polyclonal to Rabbit IgG –  
H&L – Pre-Adsorbed (HRP) at 1/6000 dilution

Developed using the ECL technique.

Performed under reducing conditions.

**Predicted band size:** 31 kDa

**Observed band size:** 31 kDa

**Exposure time:** 5 minutes

**Please note:** All products are "FOR RESEARCH USE ONLY AND ARE NOT INTENDED FOR DIAGNOSTIC OR THERAPEUTIC USE"

**Our Abpromise to you: Quality guaranteed and expert technical support**

- Replacement or refund for products not performing as stated on the datasheet
- Valid for 12 months from date of delivery
- Response to your inquiry within 24 hours
- We provide support in Chinese, English, French, German, Japanese and Spanish
- Extensive multi-media technical resources to help you
- We investigate all quality concerns to ensure our products perform to the highest standards

If the product does not perform as described on this datasheet, we will offer a refund or replacement. For full details of the Abpromise, please visit <https://www.abcam.co.jp/abpromise> or contact our technical team.

**Terms and conditions**

- Guarantee only valid for products bought direct from Abcam or one of our authorized distributors