


## Product datasheet

# Anti-DCL-1 antibody ab109991

### 画像数 2

#### 製品の概要

製品名	Anti-DCL-1 antibody
製品の詳細	Rabbit polyclonal to DCL-1
由来種	Rabbit
アプリケーション	適用あり: WB, IHC-P
種交差性	交差種: Human 交差が予測される動物種: Mouse, Rat 
免疫原	A synthesized peptide derived from internal region of Human DCL-1
ポジティブ・コントロール	Human lymph node tissue HT-29 cells

#### 製品の特性

製品の状態	Liquid
保存方法	Frozen Stock (-20C). Shelf life 12 months.
バッファー	pH: 7.40 Preservative: 0.02% Sodium azide Constituents: PBS, 50% Glycerol, 0.88% Sodium chloride
精製度	Immunogen affinity purified
ポリ/モノ	ポリクローナル
アイソタイプ	IgG

#### アプリケーション

Our [Abpromise guarantee](#) covers the use of **ab109991** in the following tested applications.

The application notes include recommended starting dilutions; optimal dilutions/concentrations should be determined by the end user.

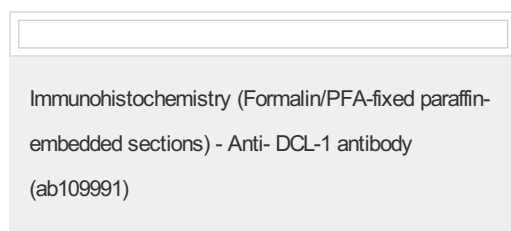
アプリケーション	Abreviews	特記事項
WB		1/500 - 1/1000. Predicted molecular weight: 26 kDa.

アプリケーション	Abreviews	特記事項
IHC-P		1/50 - 1/100. Perform heat mediated antigen retrieval with citrate buffer pH 6 before commencing with IHC staining protocol.

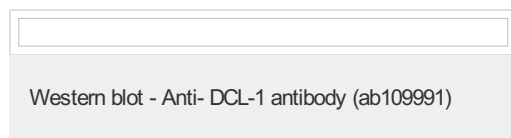
## ターゲット情報

組織特異性	Expressed in myeloid and B lymphoid cell lines. Isoform 2 and isoform 3 are expressed in malignant Hodgkin lymphoma cells called Hodgkin and Reed-Sternberg (HRS) cells.
配列類似性	Contains 1 C-type lectin domain.
細胞内局在	Membrane.

## 画像



Immunohistochemistry analysis of paraffin-embedded human lymph node tissue, using ab109991. The picture on the right is treated with the synthesized peptide.



**All lanes :** Anti-DCL-1 antibody (ab109991) at 1/500 dilution

**Lane 1 :** HT-29 cells

**Lane 2 :** HT-29 cells with synthesized peptide at 10 µg

Lysates/proteins at 30 µg per lane.

**Predicted band size:** 26 kDa

**Please note:** All products are "FOR RESEARCH USE ONLY AND ARE NOT INTENDED FOR DIAGNOSTIC OR THERAPEUTIC USE"

## Our Abpromise to you: Quality guaranteed and expert technical support

- Replacement or refund for products not performing as stated on the datasheet
- Valid for 12 months from date of delivery
- Response to your inquiry within 24 hours
- We provide support in Chinese, English, French, German, Japanese and Spanish
- Extensive multi-media technical resources to help you

- We investigate all quality concerns to ensure our products perform to the highest standards

If the product does not perform as described on this datasheet, we will offer a refund or replacement. For full details of the Abpromise, please visit <https://www.abcam.co.jp/abpromise> or contact our technical team.

### **Terms and conditions**

---

- Guarantee only valid for products bought direct from Abcam or one of our authorized distributors