

Product datasheet

Anti-DAZAP1 antibody ab51010

1 References [画像数 2](#)

製品の概要

製品名	Anti-DAZAP1 antibody
製品の詳細	Rabbit polyclonal to DAZAP1
由来種	Rabbit
アプリケーション	適用あり: WB, IHC-P, ELISA
種交差性	交差種: Human
免疫原	A region within synthetic peptide: QAAPDMSKPP TAQPDPFYGQ YGLGSSYPAP PGCGRPHFVYS LMVRLSSDVA, corresponding to amino acids 240-289 of Human DAZAP1 Run BLAST with ExPASy Run BLAST with NCBI
ポジティブ・コントロール	HepG2 cell lysate, Human kidney.

製品の特性

製品の状態	Liquid
保存方法	Shipped at 4°C. Upon delivery aliquot and store at -20°C. Avoid freeze / thaw cycles.
バッファー	Preservative: 0.09% Sodium azide Constituents: 2% Sucrose, PBS
精製度	Immunogen affinity purified
ポリ/モノ	ポリクローナル
アイソタイプ	IgG

アプリケーション

Our [Abpromise guarantee](#) covers the use of **ab51010** in the following tested applications.

The application notes include recommended starting dilutions; optimal dilutions/concentrations should be determined by the end user.

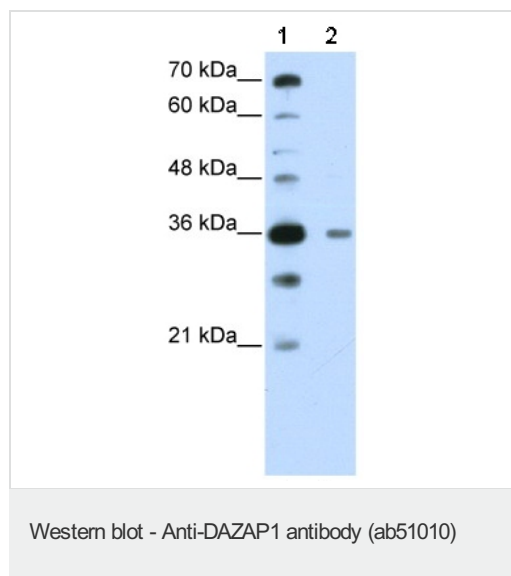
アプリケーション	Abreviews	特記事項
WB		Use a concentration of 0.5 µg/ml. Predicted molecular weight: 43 kDa. Good results were obtained when blocked with 5% non-fat dry milk in 0.05% PBS-T.
IHC-P		Use a concentration of 4 - 8 µg/ml.

アプリケーション	Abreviews	特記事項
ELISA		1/312500. Titre using peptide based assay 1/312500.

ターゲット情報

機能	RNA-binding protein, which may be required during spermatogenesis.
組織特異性	Mainly expressed in testis. Expressed to a lower level in thymus. Weakly or not expressed in heart, liver, brain, placenta, lung, skeletal muscle, kidney and pancreas.
配列類似性	Contains 2 RRM (RNA recognition motif) domains.
翻訳後修飾	Phosphorylated upon DNA damage, probably by ATM or ATR.
細胞内局在	Cytoplasm. Nucleus. Predominantly cytoplasmic (By similarity). Nuclear at some stages of spermatozoides development. In midpachytene spermatocytes, it is localized in both the cytoplasm and the nuclei and is clearly excluded from the sex vesicles. In round spermatids, it localizes mainly in the nuclei, whereas in elongated spermatids, it localizes to the cytoplasm.

画像



Lane 1 : Marker

Lane 2 : Anti-DAZAP1 antibody (ab51010) at 0.5 µg/ml

Lane 2 : HepG2 cell lysate at 10 µg with skim milk/ PBS at 5 %

Secondary

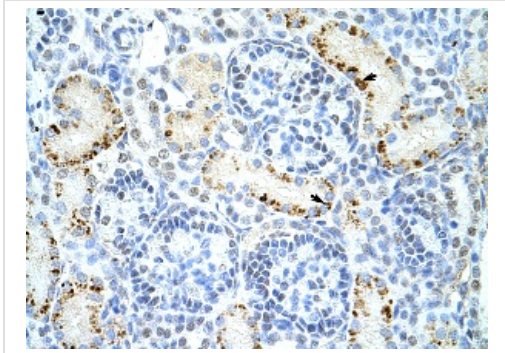
Lane 2 : HRP conjugated anti-Rabbit IgG at 1/50000 dilution

Predicted band size: 43 kDa

Observed band size: 36 kDa

[why is the actual band size different from the predicted?](#)

Gel concentration: 12%



Ab51010 at 4.0 µg/ml staining epithelial cells of renal tubule from human kidney; paraffin embedded; magnification 400x.

Immunohistochemistry (Formalin/PFA-fixed paraffin-embedded sections) - Anti-DAZAP1 antibody (ab51010)

Please note: All products are "FOR RESEARCH USE ONLY AND ARE NOT INTENDED FOR DIAGNOSTIC OR THERAPEUTIC USE"

Our Abpromise to you: Quality guaranteed and expert technical support

- Replacement or refund for products not performing as stated on the datasheet
- Valid for 12 months from date of delivery
- Response to your inquiry within 24 hours
- We provide support in Chinese, English, French, German, Japanese and Spanish
- Extensive multi-media technical resources to help you
- We investigate all quality concerns to ensure our products perform to the highest standards

If the product does not perform as described on this datasheet, we will offer a refund or replacement. For full details of the Abpromise, please visit <https://www.abcam.co.jp/abpromise> or contact our technical team.

Terms and conditions

- Guarantee only valid for products bought direct from Abcam or one of our authorized distributors