

## Product datasheet

# Anti-Cytochrome C Oxidase subunit VIc antibody [3G5F7G3] ab110267

6 References [画像数 3](#)

### 製品の概要

製品名	Anti-Cytochrome C Oxidase subunit VIc antibody [3G5F7G3]
製品の詳細	Mouse monoclonal [3G5F7G3] to Cytochrome C Oxidase subunit VIc
由来種	Mouse
アプリケーション	<b>適用あり:</b> ICC/IF, Flow Cyt, WB
種交差性	<b>交差種:</b> Rat, Cow, Human
免疫原	Cytochrome C Oxidase subunit VIc from Bovine Heart
ポジティブ・コントロール	Isolated mitochondria from Human heart, bovine heart, and rat heart. IF/ICC: HeLa cell line
特記事項	<p>This antibody clone is manufactured by Abcam.</p> <p>Product was previously marketed under the MitoSciences sub-brand.</p> <p>If you require this antibody in a particular buffer formulation or a particular conjugate for your experiments, please contact <a href="mailto:orders@abcam.com">orders@abcam.com</a> or you can find further information <a href="#">here</a>.</p>

### 製品の特性

製品の状態	Liquid
保存方法	Shipped at 4°C. Store at +4°C. Do Not Freeze.
バッファー	Preservative: 0.02% Sodium azide Constituent: HEPES buffered saline
特記事項(精製)	Near homogeneity as judged by SDS-PAGE. ab110267 was produced in vitro using hybridomas grown in serum-free medium, and then purified by biochemical fractionation.
ポリ/モノ	モノクローナル
クローン名	3G5F7G3
アイソタイプ	IgG2b
軽鎖の種類	kappa

### アプリケーション

Our [Abpromise guarantee](#) covers the use of **ab110267** in the following tested applications.

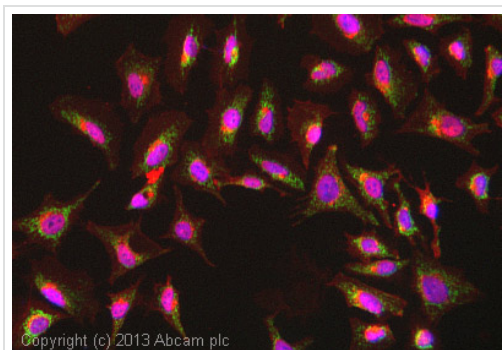
The application notes include recommended starting dilutions; optimal dilutions/concentrations should be determined by the end user.

アプリケーション	Abreviews	特記事項
ICC/IF		Use a concentration of 5 µg/ml.
Flow Cyt		Use 1 µg for 10 <sup>6</sup> cells. <a href="#">ab170192</a> - Mouse monoclonal IgG2b, is suitable for use as an isotype control with this antibody.
WB		Use a concentration of 2 µg/ml. Predicted molecular weight: 9 kDa.

## ターゲット情報

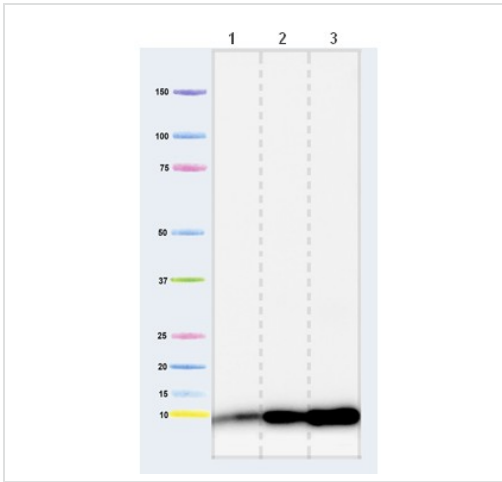
機能	This protein is one of the nuclear-coded polypeptide chains of cytochrome c oxidase, the terminal oxidase in mitochondrial electron transport.
配列類似性	Belongs to the cytochrome c oxidase subunit 6c family.
細胞内局在	Mitochondrion inner membrane.

## 画像



Immunocytochemistry/ Immunofluorescence - Anti-Cytochrome C Oxidase subunit VIc antibody [3G5F7G3] (ab110267)

ICC/IF image of ab110267 stained HeLa cells. The cells were 4% formaldehyde fixed (10 min) and then incubated in 1%BSA / 10% normal goat serum / 0.3M glycine in 0.1% PBS-Tween for 1h to permeabilise the cells and block non-specific protein-protein interactions. The cells were then incubated with the antibody (ab110267, 5µg/ml) overnight at +4°C. The secondary antibody (green) was [ab96879](#), DyLight® 488 goat anti-mouse IgG (H+L) used at a 1/250 dilution for 1h. Alexa Fluor® 594 WGA was used to label plasma membranes (red) at a 1/200 dilution for 1h. DAPI was used to stain the cell nuclei (blue) at a concentration of 1.43µM.



Western blot - Anti-Cytochrome C Oxidase subunit Vlc antibody [3G5F7G3] (ab110267)

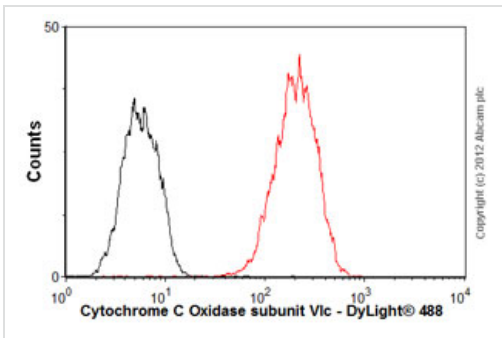
**All lanes :** Anti-Cytochrome C Oxidase subunit Vlc antibody [3G5F7G3] (ab110267) at 2 µg/ml

**Lane 1 :** Isolated mitochondria from Human heart at 50 µg

**Lane 2 :** Isolated mitochondria from Bovine heart at 1 µg

**Lane 3 :** Isolated mitochondria from Rat heart at 10 µg

**Predicted band size:** 9 kDa



Flow Cytometry - Anti-Cytochrome C Oxidase subunit Vlc antibody [3G5F7G3] (ab110267)

Overlay histogram showing HepG2 cells stained with ab110267 (red line). The cells were fixed with 80% methanol (5 min) and then permeabilized with 0.1% PBS-Tween for 20 min. The cells were then incubated in 1x PBS / 10% normal goat serum / 0.3M glycine to block non-specific protein-protein interactions. The cells were then incubated with the antibody (ab110267, 1µg/1x10<sup>6</sup> cells) for 30 min at 22°C. The secondary antibody used was DyLight® 488 goat anti-mouse IgG (H+L) (ab96879) at 1/500 dilution for 30 min at 22°C. Isotype control antibody (black line) was mouse IgG2b [PLPV219] (ab91366, 2µg/1x10<sup>6</sup> cells) used under the same conditions. Acquisition of >5,000 events was performed. This antibody gave a positive signal in HepG2 cells fixed with 4% paraformaldehyde (10 min)/permeabilized with 0.1% PBS-Tween for 20 min used under the same conditions.

**Please note:** All products are "FOR RESEARCH USE ONLY AND ARE NOT INTENDED FOR DIAGNOSTIC OR THERAPEUTIC USE"

**Our Abpromise to you: Quality guaranteed and expert technical support**

- Replacement or refund for products not performing as stated on the datasheet

- Valid for 12 months from date of delivery
- Response to your inquiry within 24 hours
  
- We provide support in Chinese, English, French, German, Japanese and Spanish
- Extensive multi-media technical resources to help you
- We investigate all quality concerns to ensure our products perform to the highest standards

If the product does not perform as described on this datasheet, we will offer a refund or replacement. For full details of the Abpromise, please visit <https://www.abcam.co.jp/abpromise> or contact our technical team.

## **Terms and conditions**

---

- Guarantee only valid for products bought direct from Abcam or one of our authorized distributors