

## Product datasheet

### Anti-CrkL antibody [Y243] ab32126

リコンビナント RabMAb®

4 References 画像数 2

#### 製品の概要

---

製品名	Anti-CrkL antibody [Y243]
製品の詳細	Rabbit monoclonal [Y243] to CrkL
由来種	Rabbit
アプリケーション	<b>適用あり:</b> WB, IHC-P, ICC <b>適用なし:</b> Flow Cyt or IP
種交差性	<b>交差種:</b> Human
免疫原	A synthetic peptide corresponding to residues in the SH2 domain, near the N-term of human CrkL
ポジティブ・コントロール	K562 cell lysate and human breast carcinoma
特記事項	Mouse, Rat: We have preliminary internal testing data to indicate this antibody may not react with these species. Please contact us for more information.

Our RabMAb® technology is a patented hybridoma-based technology for making rabbit monoclonal antibodies. For details on our patents, please refer to [RabMAb® patents](#)

This product is a recombinant rabbit monoclonal antibody.

#### 製品の特性

---

製品の状態	Liquid
保存方法	Shipped at 4°C. Upon delivery aliquot and store at -20°C. Avoid freeze / thaw cycles.
バッファー	PBS 49%, Sodium azide 0.01%, Glycerol 50%, BSA 0.05%
精製度	IgG fraction
ポリ/モノ	モノクローナル
クローン名	Y243
アイソタイプ	IgG

#### アプリケーション

---

Our [Abpromise guarantee](#) covers the use of **ab32126** in the following tested applications.

The application notes include recommended starting dilutions; optimal dilutions/concentrations should be determined by the end user.

アプリケーション	Abreviews	特記事項
WB		1/1000. Detects a band of approximately 39 kDa (predicted molecular weight: 33 kDa).
IHC-P		1/50 - 1/100.
ICC		1/50 - 1/100.

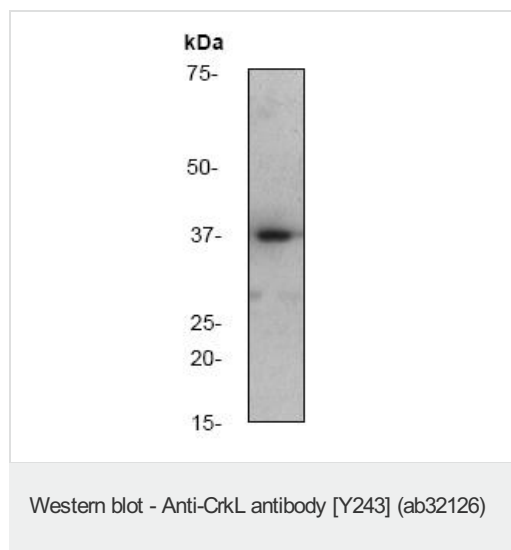
**追加情報** Is unsuitable for Flow Cyt or IP.

### ターゲット情報

**機能** May mediate the transduction of intracellular signals.

**配列類似性** Belongs to the CRK family.  
Contains 1 SH2 domain.  
Contains 2 SH3 domains.

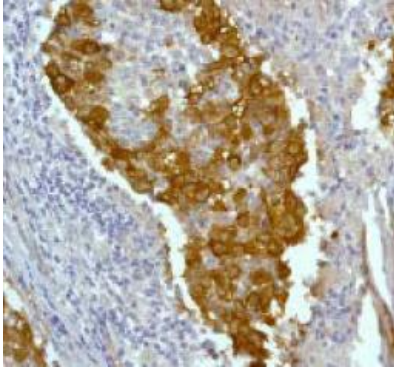
### 画像



Anti-CrkL antibody [Y243] (ab32126) at  
1/1000 dilution + K562 cell lysate

**Predicted band size:** 33 kDa

**Observed band size:** 39 kDa



ab32126, staining human breast carcinoma by immunohistochemistry, Paraffin embedded tissue

Immunohistochemistry (Formalin/PFA-fixed paraffin-embedded sections) - Anti-CrkL antibody [Y243] (ab32126)

**Please note:** All products are "FOR RESEARCH USE ONLY AND ARE NOT INTENDED FOR DIAGNOSTIC OR THERAPEUTIC USE"

### Our Abpromise to you: Quality guaranteed and expert technical support

- Replacement or refund for products not performing as stated on the datasheet
- Valid for 12 months from date of delivery
- Response to your inquiry within 24 hours
- We provide support in Chinese, English, French, German, Japanese and Spanish
- Extensive multi-media technical resources to help you
- We investigate all quality concerns to ensure our products perform to the highest standards

If the product does not perform as described on this datasheet, we will offer a refund or replacement. For full details of the Abpromise, please visit <https://www.abcam.co.jp/abpromise> or contact our technical team.

### Terms and conditions

- Guarantee only valid for products bought direct from Abcam or one of our authorized distributors