


## Product datasheet

# Anti-Crk p38 antibody [mAbcam69723] ab69723

### 画像数 1

#### 製品の概要

製品名	Anti-Crk p38 antibody [mAbcam69723]
製品の詳細	Mouse monoclonal [mAbcam69723] to Crk p38
由来種	Mouse
アプリケーション	適用あり: WB
種交差性	交差種: Mouse 交差が予測される動物種: Rat, Chicken, Human 
免疫原	Synthetic peptide conjugated to KLH derived from within residues 250 to the C-terminus of Mouse Crk p38. Immunogen の所有権に関して (Peptide available as <a href="#">ab95851</a> .)
ポジティブ・コントロール	This antibody gave a positive signal in the following whole cell lysates: K562; HepG2; HeLa; HEK293; MCF7.
特記事項	This antibody clone is manufactured by Abcam. If you require this antibody in a particular buffer formulation or a particular conjugate for your experiments, please contact <a href="mailto:orders@abcam.com">orders@abcam.com</a> or you can find further information <a href="#">here</a> .

#### 製品の特性

製品の状態	Liquid
保存方法	Shipped at 4°C. Store at +4°C short term (1-2 weeks). Upon delivery aliquot. Store at -20°C or -80°C. Avoid freeze / thaw cycle.
バッファー	Preservative: 0.02% Sodium Azide Constituents: 1% BSA, PBS, pH 7.4
精製度	IgG fraction
ポリ/モノ	モノクローナル
クローン名	mAbcam69723
ミエローマ	Sp2/0-Ag14
アイソタイプ	IgG

#### アプリケーション

Our [Abpromise guarantee](#) covers the use of **ab69723** in the following tested applications.

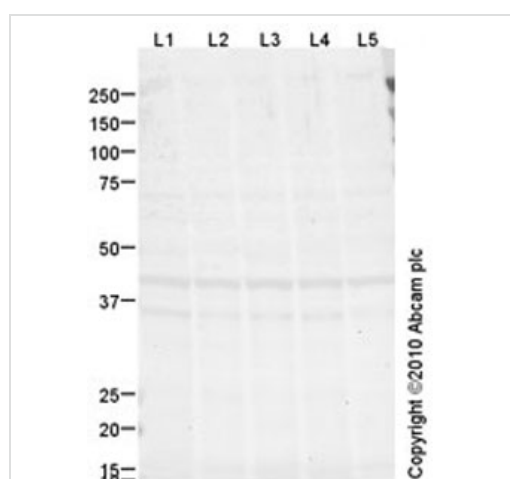
The application notes include recommended starting dilutions; optimal dilutions/concentrations should be determined by the end user.

アプリケーション	Abreviews	特記事項
WB		Use a concentration of 1 mg/ml. Detects a band of approximately 36 kDa (predicted molecular weight: 34 kDa).

## ターゲット情報

機能	The Crk-I and Crk-II forms differ in their biological activities. Crk-II has less transforming activity than Crk-I. Crk-II mediates attachment-induced MAPK8 activation, membrane ruffling and cell motility in a Rac-dependent manner. Involved in phagocytosis of apoptotic cells and cell motility via its interaction with DOCK1 and DOCK4.
配列類似性	Belongs to the CRK family. Contains 1 SH2 domain. Contains 2 SH3 domains.
ドメイン	The C-terminal SH3 domain function as a negative modulator for transformation and the N-terminal SH3 domain appears to function as a positive regulator for transformation. The SH2 domain mediates interaction with SHB.
翻訳後修飾	Phosphorylation of Crk-II (40 kDa) gives rise to a 42 kDa form. Phosphorylated on Tyr-221 upon cell adhesion. Results in the negative regulation of the association with SH2- and SH3-binding partners, possibly by the formation of an intramolecular interaction of phosphorylated Tyr-221 with the SH2 domain. This leads finally to the down-regulation of the Crk signaling pathway.
細胞内局在	Cytoplasm. Cell membrane. Translocated to the plasma membrane upon cell adhesion.

## 画像



Western blot - Anti-Crk p38 antibody  
[mAbcam69723] (ab69723)

**All lanes** : Anti-Crk p38 antibody [mAbcam69723] (ab69723) at 1 µg/ml

**Lane 1** : K562 (Human erythromyeloblastoid leukemia cell line) Whole Cell Lysate

**Lane 2** : HepG2 (Human hepatocellular liver carcinoma cell line) Whole Cell Lysate

**Lane 3** : HeLa (Human epithelial carcinoma cell line) Whole Cell Lysate

**Lane 4** : HEK293 (Human embryonic kidney cell line) Whole Cell Lysate

**Lane 5** : MCF7 (Human breast adenocarcinoma cell line) Whole Cell Lysate

Lysates/proteins at 20 µg per lane.

## Secondary

**All lanes** : Goat polyclonal to Mouse IgG - H&L - Pre-Adsorbed (HRP) at 1/3000 dilution

Developed using the ECL technique.

Performed under reducing conditions.

**Predicted band size:** 34 kDa

**Observed band size:** 36,45 kDa

[why is the actual band size different from the predicted?](#)

**Exposure time:** 20 minutes

Crk p38 contains a number of potential phosphorylation sites (SwissProt) which may explain the migration pattern observed.

**Please note:** All products are "FOR RESEARCH USE ONLY AND ARE NOT INTENDED FOR DIAGNOSTIC OR THERAPEUTIC USE"

## Our Abpromise to you: Quality guaranteed and expert technical support

---

- Replacement or refund for products not performing as stated on the datasheet
- Valid for 12 months from date of delivery
- Response to your inquiry within 24 hours
- We provide support in Chinese, English, French, German, Japanese and Spanish
- Extensive multi-media technical resources to help you
- We investigate all quality concerns to ensure our products perform to the highest standards

If the product does not perform as described on this datasheet, we will offer a refund or replacement. For full details of the Abpromise, please visit <https://www.abcam.co.jp/abpromise> or contact our technical team.

## Terms and conditions

---

- Guarantee only valid for products bought direct from Abcam or one of our authorized distributors