

Product datasheet

Anti-Cpn10 antibody [EPR4475] ab108611

リコンビナント **RabMAb**

画像数 2

製品の概要

製品名	Anti-Cpn10 antibody [EPR4475]
製品の詳細	Rabbit monoclonal [EPR4475] to Cpn10
由来種	Rabbit
アプリケーション	適用あり: WB, IP, Flow Cyt 適用なし: ICC or IHC-P
種交差性	交差種: Rat, Human
免疫原	Synthetic peptide within Human Cpn10 aa 50-150. The exact sequence is proprietary.
ポジティブ・コントロール	HeLa, HepG2, Raji, and Jurkat cell lysates. Permeabilized Jurkat cells.
特記事項	Mouse: We have preliminary internal testing data to indicate this antibody may not react with this species. Please contact us for more information.

Our RabMAb[®] technology is a patented hybridoma-based technology for making rabbit monoclonal antibodies. For details on our patents, please refer to [RabMAb[®] patents](#)

This product is a recombinant rabbit monoclonal antibody.

製品の特性

製品の状態	Liquid
保存方法	Shipped at 4°C. Store at -20°C. Stable for 12 months at -20°C.
バッファー	pH: 7.20 Preservative: 0.05% Sodium azide Constituents: 0.1% BSA, 40% Glycerol, 9.85% Tris glycine, 50% Tissue culture supernatant
精製度	Tissue culture supernatant
ポリ/モノ	モノクローナル
クローン名	EPR4475
アイソタイプ	IgG

アプリケーション

Our [Abpromise guarantee](#) covers the use of **ab108611** in the following tested applications.

The application notes include recommended starting dilutions; optimal dilutions/concentrations should be determined by the end user.

アプリケーション	Abreviews	特記事項
WB		1/1000 - 1/10000. Detects a band of approximately 11 kDa (predicted molecular weight: 11 kDa).
IP		1/10 - 1/100.
Flow Cyt		1/10 - 1/100. ab172730 - Rabbit monoclonal IgG, is suitable for use as an isotype control with this antibody.

追加情報 Is unsuitable for ICC or IHC-P.

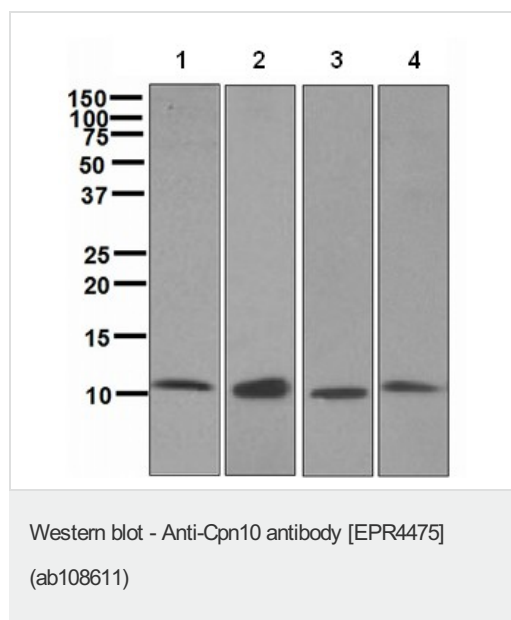
ターゲット情報

機能 Eukaryotic CPN10 homolog which is essential for mitochondrial protein biogenesis, together with CPN60. Binds to CPN60 in the presence of Mg-ATP and suppresses the ATPase activity of the latter.

配列類似性 Belongs to the GroES chaperonin family.

細胞内局在 Mitochondrion matrix.

画像



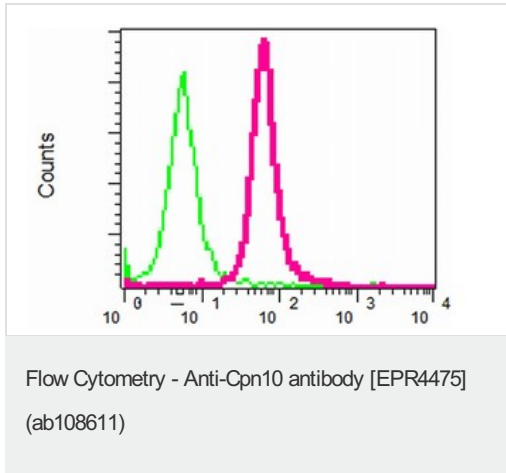
All lanes : Anti-Cpn10 antibody [EPR4475] (ab108611) at 1/1000 dilution

- Lane 1** : HeLa cell lysate
- Lane 2** : HepG2 cell lysate
- Lane 3** : Raji cell lysate
- Lane 4** : Jurkat cell lysate

Lysates/proteins at 10 µg per lane.

Predicted band size: 11 kDa

Observed band size: 11 kDa



Flow cytometric analysis of permeabilized Jurkat cells using ab108611 at 1/10 (red) or a Rabbit IgG (negative) (green).

Please note: All products are "FOR RESEARCH USE ONLY AND ARE NOT INTENDED FOR DIAGNOSTIC OR THERAPEUTIC USE"

Our Abpromise to you: Quality guaranteed and expert technical support

- Replacement or refund for products not performing as stated on the datasheet
- Valid for 12 months from date of delivery
- Response to your inquiry within 24 hours
- We provide support in Chinese, English, French, German, Japanese and Spanish
- Extensive multi-media technical resources to help you
- We investigate all quality concerns to ensure our products perform to the highest standards

If the product does not perform as described on this datasheet, we will offer a refund or replacement. For full details of the Abpromise, please visit <https://www.abcam.co.jp/abpromise> or contact our technical team.

Terms and conditions

- Guarantee only valid for products bought direct from Abcam or one of our authorized distributors