

## Product datasheet

# Anti-Coronin 1a antibody ab53395

2 References [画像数 1](#)

### 製品の概要

製品名	Anti-Coronin 1a antibody
製品の詳細	Chicken polyclonal to Coronin 1a
由来種	Chicken
アプリケーション	<b>適用あり:</b> ICC/IF
種交差性	<b>交差種:</b> Mouse, Rat, Human
免疫原	Synthetic peptide (Human)
ポジティブ・コントロール	Cultured adult mouse brain cells.

### 製品の特性

製品の状態	Liquid
保存方法	Shipped at 4°C. Store at +4°C short term (1-2 weeks). Upon delivery aliquot. Store at -20°C long term. Avoid freeze / thaw cycle. Store In the Dark.
バッファー	Preservative: 0.02% Sodium Azide Constituents: PBS
精製度	Protein L purified
ポリ/モノ	ポリクローナル
アイソタイプ	IgY

### アプリケーション

Our [Abpromise guarantee](#) covers the use of **ab53395** in the following tested applications.

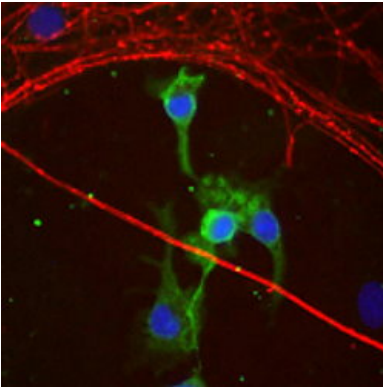
The application notes include recommended starting dilutions; optimal dilutions/concentrations should be determined by the end user.

アプリケーション	Abreviews	特記事項
ICC/IF		1/1000.

### ターゲット情報

<b>機能</b>	May be a crucial component of the cytoskeleton of highly motile cells, functioning both in the invagination of large pieces of plasma membrane, as well as in forming protrusions of the plasma membrane involved in cell locomotion. In mycobacteria-infected cells, its retention on the phagosomal membrane prevents fusion between phagosomes and lysosomes.
<b>組織特異性</b>	Expressed in brain, thymus, spleen, bone marrow and lymph node. Low in lung and gut.
<b>配列類似性</b>	Belongs to the WD repeat coronin family. Contains 7 WD repeats.
<b>細胞内局在</b>	Cytoplasm > cytoskeleton. Cytoplasm > cell cortex. Cytoplasmic vesicle > phagosome membrane. In non-infected macrophages, associated with the cortical microtubule network. In mycobacteria-infected macrophages, becomes progressively relocalized and retained around the mycobacterial phagosomes. Retention on the phagosomal membrane is strictly dependent on mycobacterial viability and not due to impaired acidification.

## 画像



Ab53395 at 1/1000 dilution staining cultured adult mouse brain cells.

Immunocytochemistry/ Immunofluorescence - Anti-Coronin 1a antibody (ab53395)

**Please note:** All products are "FOR RESEARCH USE ONLY AND ARE NOT INTENDED FOR DIAGNOSTIC OR THERAPEUTIC USE"

## Our Abpromise to you: Quality guaranteed and expert technical support

- Replacement or refund for products not performing as stated on the datasheet
- Valid for 12 months from date of delivery
- Response to your inquiry within 24 hours
- We provide support in Chinese, English, French, German, Japanese and Spanish
- Extensive multi-media technical resources to help you
- We investigate all quality concerns to ensure our products perform to the highest standards

If the product does not perform as described on this datasheet, we will offer a refund or replacement. For full details of the Abpromise, please visit <https://www.abcam.co.jp/abpromise> or contact our technical team.

## Terms and conditions

- Guarantee only valid for products bought direct from Abcam or one of our authorized distributors