


Product datasheet

Anti-Connexin 45 / GJA7 antibody ab70365

画像数 2

製品の概要

製品名	Anti-Connexin 45 / GJA7 antibody
製品の詳細	Rabbit polyclonal to Connexin 45 / GJA7
由来種	Rabbit
アプリケーション	適用あり: WB
種交差性	交差種: Rat, Human 交差が予測される動物種: Mouse, Dog 
免疫原	Synthetic peptide conjugated to KLH derived from within residues 350 to the C-terminus of Human Connexin 45/ GJA7. Immunogen の所有権に関して (Peptide available as ab91444 .)
ポジティブ・コントロール	This antibody gave a positive signal in Rat Lung Tissue Lysate and in the following whole cell lysates: SHSY5Y; SKNBE; SKNSH.

製品の特性

製品の状態	Liquid
保存方法	Shipped at 4°C. Store at +4°C short term (1-2 weeks). Upon delivery aliquot. Store at -20°C or -80°C. Avoid freeze / thaw cycle.
バッファー	Preservative: 0.02% Sodium Azide Constituents: 1% BSA, PBS, pH 7.4
精製度	Immunogen affinity purified
ポリ/モノ	ポリクローナル
アイソタイプ	IgG

アプリケーション

Our [Abpromise guarantee](#) covers the use of **ab70365** in the following tested applications.

The application notes include recommended starting dilutions; optimal dilutions/concentrations should be determined by the end user.

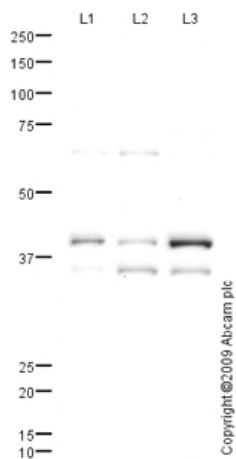
アプリケーション	Abreviews	特記事項

アプリケーション	Abreviews	特記事項
WB		Use a concentration of 1 µg/ml. Detects a band of approximately 41 kDa (predicted molecular weight: 45 kDa).

ターゲット情報

機能	One gap junction consists of a cluster of closely packed pairs of transmembrane channels, the connexons, through which materials of low MW diffuse from one cell to a neighboring cell.
配列類似性	Belongs to the connexin family. Gamma-type subfamily.
細胞内局在	Cell membrane. Cell junction > gap junction.

画像



Western blot - Anti-Connexin 45 / GJA7 antibody
(ab70365)

All lanes : Anti-Connexin 45 / GJA7 antibody
(ab70365) at 1 µg/ml

Lane 1 : SHSY-5Y (Human neuroblastoma
cell line) Whole Cell Lysate

Lane 2 : SK N BE (Human neuroblastoma)
Whole Cell Lysate

Lane 3 : SK N SH (Human neuroblastoma)
Whole Cell Lysate

Lysates/proteins at 10 µg per lane.

Secondary

All lanes : Goat polyclonal to Rabbit IgG -
H&L - Pre-Adsorbed (HRP) at 1/3000 dilution

Developed using the ECL technique.

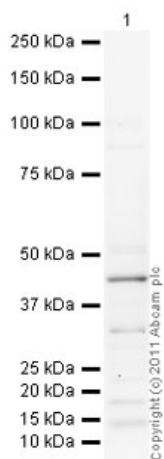
Performed under reducing conditions.

Predicted band size: 45 kDa

Observed band size: 41 kDa

Additional bands at: 35 kDa, 68 kDa. We
are unsure as to the identity of these extra
bands.

Exposure time: 8 minutes



Western blot - Anti-Connexin 45 / GJA7 antibody
(ab70365)

Anti-Connexin 45 / GJA7 antibody (ab70365)
at 1 µg/ml + Lung (Rat) Tissue Lysate at 10 µg

Secondary

Goat Anti-Rabbit IgG H&L (HRP) preadsorbed
(ab97080) at 1/5000 dilution

Developed using the ECL technique.

Performed under reducing conditions.

Predicted band size: 45 kDa

Observed band size: 45 kDa

Exposure time: 20 minutes

Please note: All products are "FOR RESEARCH USE ONLY AND ARE NOT INTENDED FOR DIAGNOSTIC OR THERAPEUTIC USE"

Our Abpromise to you: Quality guaranteed and expert technical support

- Replacement or refund for products not performing as stated on the datasheet
- Valid for 12 months from date of delivery
- Response to your inquiry within 24 hours
- We provide support in Chinese, English, French, German, Japanese and Spanish
- Extensive multi-media technical resources to help you
- We investigate all quality concerns to ensure our products perform to the highest standards

If the product does not perform as described on this datasheet, we will offer a refund or replacement. For full details of the Abpromise, please visit <https://www.abcam.co.jp/abpromise> or contact our technical team.

Terms and conditions

- Guarantee only valid for products bought direct from Abcam or one of our authorized distributors