

## Product datasheet

# Anti-Claudin 10 antibody ab52234

★★★★★ 2 Abreviews 2 References 画像数 2

### 製品の概要

製品名	Anti-Claudin 10 antibody
製品の詳細	Rabbit polyclonal to Claudin 10
由来種	Rabbit
アプリケーション	適用あり: ELISA, WB, IHC-P
種交差性	交差種: Human 交差が予測される動物種: Mouse
免疫原	Synthetic peptide (Human)
ポジティブ・コントロール	Extracts from LOVO cells.

### 製品の特性

製品の状態	Liquid
保存方法	Shipped at 4°C. Store at -20°C. Stable for 12 months at -20°C.
バッファー	pH: 7.40 Preservative: 0.02% Sodium azide Constituents: PBS, 50% Glycerol, 0.87% Sodium chloride
精製度	Immunogen affinity purified
ポリ/モノ	ポリクローナル
アイソタイプ	IgG

### アプリケーション

Our [Abpromise guarantee](#) covers the use of **ab52234** in the following tested applications.

The application notes include recommended starting dilutions; optimal dilutions/concentrations should be determined by the end user.

アプリケーション	Abreviews	特記事項
ELISA		1/10000.
WB	★★★★★	1/300 - 1/1000. Detects a band of approximately 24 kDa (predicted molecular weight: 24 kDa).

**アプリケーション****Abreviews****特記事項**

IHC-P



Use at an assay dependent concentration.

**ターゲット情報****機能**

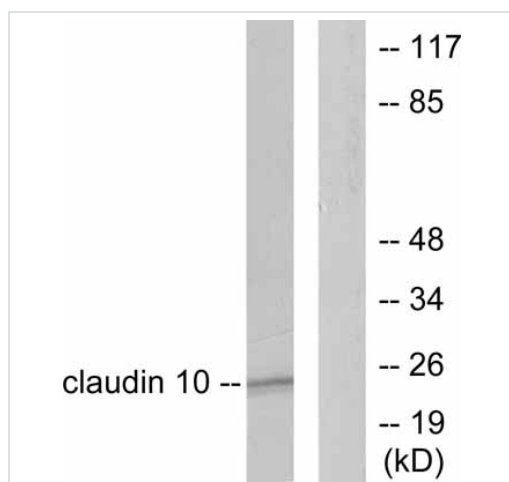
Plays a major role in tight junction-specific obliteration of the intercellular space, through calcium-independent cell-adhesion activity.

**配列類似性**

Belongs to the claudin family.

**細胞内局在**

Cell junction > tight junction. Cell membrane.

**画像**

Western blot - Anti-Claudin 10 antibody (ab52234)

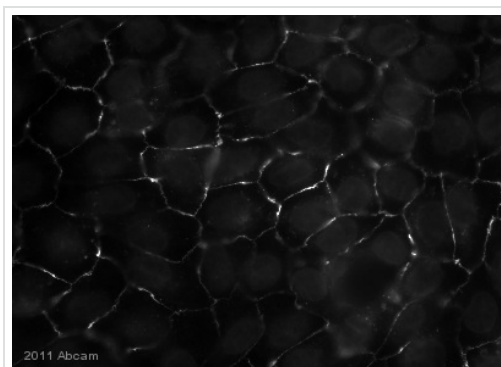
**All lanes :** Anti-Claudin 10 antibody (ab52234) at 1/300 dilution

**Lane 1 :** Extracts from LOVO cells, untreated.

**Lane 2 :** Extracts from LOVO cells, treated with the immunising peptide.

**Predicted band size:** 24 kDa

**Observed band size:** 24 kDa



Immunohistochemistry (Formalin/PFA-fixed paraffin-embedded sections) - Anti-Claudin 10 antibody (ab52234)

This image is courtesy of Anonymous Abreview.

ab52234 staining Claudin 10 in sections of Human proximal tubular cells by Immunohistochemistry (Formalin/PFA-fixed paraffin-embedded tissue sections). The sections were fixed in methanol prior to blocking with 5% BSA for 30 minutes at 20°C. The primary antibody was diluted 1/300 in 0.5% BSA/0.1% Triton X-100 and incubated with the sample for 1 hour at 20°C. An Alexa Fluor® 488-conjugated Donkey anti-Rabbit polyclonal was used as the secondary antibody, diluted 1/800.

**Please note:** All products are "FOR RESEARCH USE ONLY AND ARE NOT INTENDED FOR DIAGNOSTIC OR THERAPEUTIC USE"

## **Our Abpromise to you: Quality guaranteed and expert technical support**

---

- Replacement or refund for products not performing as stated on the datasheet
- Valid for 12 months from date of delivery
- Response to your inquiry within 24 hours
  
- We provide support in Chinese, English, French, German, Japanese and Spanish
- Extensive multi-media technical resources to help you
- We investigate all quality concerns to ensure our products perform to the highest standards

If the product does not perform as described on this datasheet, we will offer a refund or replacement. For full details of the Abpromise, please visit <https://www.abcam.co.jp/abpromise> or contact our technical team.

## **Terms and conditions**

---

- Guarantee only valid for products bought direct from Abcam or one of our authorized distributors