

Product datasheet

Anti-Centlein antibody ab122356

画像数 3

製品の概要

製品名	Anti-Centlein antibody
製品の詳細	Rabbit polyclonal to Centlein
由来種	Rabbit
アプリケーション	<b>適用あり:</b> IHC-P, WB, ICC/IF
種交差性	<b>交差種:</b> Human
免疫原	antigen sequence: LIEARKEVEV SQSKYNALSL QLSNKQTELI QKDMDITLVR KELQELQNLV KQNSTHTAQQ AELIQQLQVL NMDTQKVLRLN QEDVHTAESI S corresponding to amino acids 289-379 of Human Centlein. <a href="#">Run BLAST with ExPASy</a> <a href="#">Run BLAST with NCBI</a>
ポジティブ・コントロール	Human liver tissue; Human liver lysate; Human cell line U-251 MG

製品の特性

製品の状態	Liquid
保存方法	Shipped at 4°C. Upon delivery aliquot and store at -20°C. Avoid freeze / thaw cycles.
バッファー	pH: 7.20 Preservative: 0.02% Sodium azide Constituents: 59% PBS, 40% Glycerol
精製度	Immunogen affinity purified
ポリ/モノ	ポリクローナル
アイソタイプ	IgG

アプリケーション

Our [Abpromise guarantee](#) covers the use of **ab122356** in the following tested applications.

The application notes include recommended starting dilutions; optimal dilutions/concentrations should be determined by the end user.

アプリケーション	Abreviews	特記事項

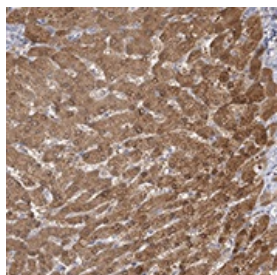
アプリケーション	Abreviews	特記事項
IHC-P		1/50 - 1/200. Perform heat mediated antigen retrieval with citrate buffer pH 6 before commencing with IHC staining protocol.
WB		1/250 - 1/500.
ICC/IF		Use a concentration of 1 - 4 µg/ml. Fixation/Permeabilization: PFA/Triton X-100.

## ターゲット情報

### 細胞内局在

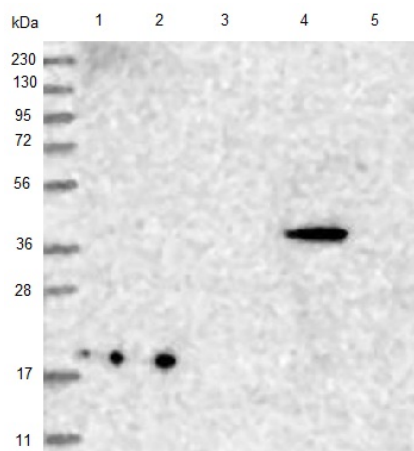
Cytoplasm > cytoskeleton > centrosome > centriole. Colocalizes with gamma-tubulin during interphase and mitosis. Appears to associated with the mother centriole during G1 phase and with daughter centrioles towards G1/S phase.

## 画像



ab122356, at 1/60 dilution, staining Centlein in paraffin-embedded Human liver tissue by Immunohistochemistry.

Immunohistochemistry (Formalin/PFA-fixed paraffin-embedded sections) - Anti-Centlein antibody (ab122356)



Western blot - Anti-Centlein antibody (ab122356)

**All lanes** : Anti-Centlein antibody (ab122356) at 1/250 dilution

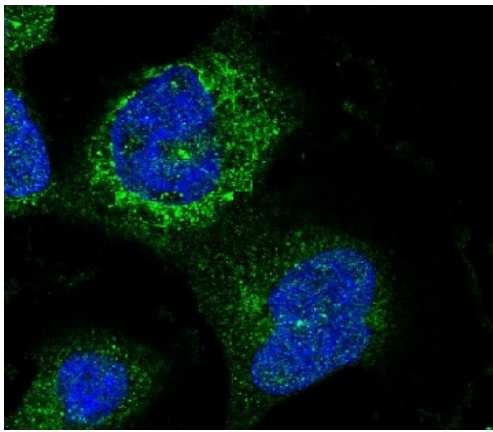
**Lane 1** : RT-4 cell lysate

**Lane 2** : U-251 MG cell lysate

**Lane 3** : Human plasma lysate

**Lane 4** : Human liver lysate

**Lane 5** : Human tonsil lysate



ab122356, at 4  $\mu\text{g/ml}$ , staining Centlein in Human cell line U-251 MG by Immunofluorescence. Antibody staining is shown in green.

Immunocytochemistry/ Immunofluorescence - Anti-Centlein antibody (ab122356)

**Please note:** All products are "FOR RESEARCH USE ONLY AND ARE NOT INTENDED FOR DIAGNOSTIC OR THERAPEUTIC USE"

### Our Abpromise to you: Quality guaranteed and expert technical support

- Replacement or refund for products not performing as stated on the datasheet
- Valid for 12 months from date of delivery
- Response to your inquiry within 24 hours
- We provide support in Chinese, English, French, German, Japanese and Spanish
- Extensive multi-media technical resources to help you
- We investigate all quality concerns to ensure our products perform to the highest standards

If the product does not perform as described on this datasheet, we will offer a refund or replacement. For full details of the Abpromise, please visit <https://www.abcam.co.jp/abpromise> or contact our technical team.

### Terms and conditions

- Guarantee only valid for products bought direct from Abcam or one of our authorized distributors