

## Product datasheet

# Anti-Cdk9 antibody ab6544

★★★★☆ 3 Abreviews 5 References 画像数 2

### 製品の概要

製品名	Anti-Cdk9 antibody
製品の詳細	Rabbit polyclonal to Cdk9
由来種	Rabbit
特異性	No reaction is observed against other related cyclin dependent kinases.
アプリケーション	<b>適用あり:</b> ICC/IF, ELISA, IHC-P, IP, WB
種交差性	<b>交差種:</b> Mouse, Rat, Human
免疫原	Multiple synthetic peptides corresponding to C-terminal and N-terminal domains of the protein coded by the human gene cdk9 (PITALRE)
特記事項	cdk9(PITALRE) interacts with a conserved domain in the TRAF-C region of the tumor necrosis factor signal transducer TRAF2. The positive transcription elongation factor b (P-TEFb) is identified as cdk9 paired with cyclin T1.

### 製品の特性

製品の状態	Liquid
保存方法	Shipped at 4°C. Store at +4°C short term (1-2 weeks). Upon delivery aliquot. Store at -20°C or -80°C. Avoid freeze / thaw cycle.
バッファー	pH: 7.20 Preservative: 0.01% Sodium azide Constituents: 0.88% Sodium chloride, 0.42% Potassium phosphate
精製度	Whole antiserum
特記事項(精製)	Sterile filtered.
ポリモノ	ポリクローナル
アイソタイプ	IgG

### アプリケーション

Our [Abpromise guarantee](#) covers the use of **ab6544** in the following tested applications.

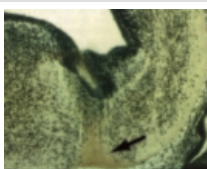
The application notes include recommended starting dilutions; optimal dilutions/concentrations should be determined by the end user.

アプリケーション	Abreviews	特記事項
ICC/IF	★★★★☆	Use at an assay dependent concentration. PubMed: 21378166
ELISA		1/500 - 1/2000.
IHC-P		1/200 - 1/1000.
IP		Use at an assay dependent concentration.
WB	★★★★☆	1/500 - 1/1000. Predicted molecular weight: 43 kDa.

## ターゲット情報

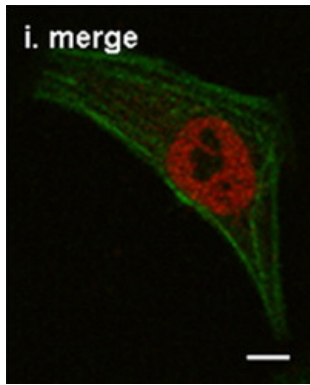
機能	Member of the cyclin-dependent kinase pair (CDK9/cyclin-T) complex, also called positive transcription elongation factor b (P-TEFb), which facilitates the transition from abortive to production elongation by phosphorylating the CTD (C-terminal domain) of the large subunit of RNA polymerase II (RNAP II), SUPT5H and RDBP. The CDK9/cyclin-K complex has also a kinase activity toward CTD of RNAP II and can substitute for P-TEFb in vitro.
組織特異性	Ubiquitous.
配列類似性	Belongs to the protein kinase superfamily. CMGC Ser/Thr protein kinase family. CDC2/CDKX subfamily. Contains 1 protein kinase domain.
細胞内局在	Nucleus.

## 画像



Immunohistochemistry (Formalin/PFA-fixed paraffin-embedded sections) - Anti-Cdk9 antibody (ab6544)

Immunohistochemical staining of mouse tissue using anti-cdk9 (PITALRE) antiserum. The staining shows the location of cdk9 / PITALRE protein in developing mouse tissue. Arrow indicates area of high expression.



Immunofluorescence analysis of HeLa cells, staining Cdk9 (red) with ab6544.

The cells were fixed with 4% paraformaldehyde and permeabilized with 0.5% Triton X-100 for 10 min at 4°C. The cells were incubated with 0.05% PBS-T before incubating with primary antibody at 1/2000 dilution.

Immunocytochemistry/ Immunofluorescence - Anti-Cdk9 antibody (ab6544)

Image from Qi T et al., J Biol Chem, 286, 15171-81. Fig 3.; doi: 10.1074/jbc.M110.184374. Epub 2011 Mar 4.

**Please note:** All products are "FOR RESEARCH USE ONLY AND ARE NOT INTENDED FOR DIAGNOSTIC OR THERAPEUTIC USE"

### Our Abpromise to you: Quality guaranteed and expert technical support

- Replacement or refund for products not performing as stated on the datasheet
- Valid for 12 months from date of delivery
- Response to your inquiry within 24 hours
- We provide support in Chinese, English, French, German, Japanese and Spanish
- Extensive multi-media technical resources to help you
- We investigate all quality concerns to ensure our products perform to the highest standards

If the product does not perform as described on this datasheet, we will offer a refund or replacement. For full details of the Abpromise, please visit <https://www.abcam.co.jp/abpromise> or contact our technical team.

### Terms and conditions

- Guarantee only valid for products bought direct from Abcam or one of our authorized distributors