

Product datasheet

Anti-Cdc37 antibody ab115166

★★★★★ 1 Abreviews [画像数 2](#)

製品の概要

製品名	Anti-Cdc37 antibody
製品の詳細	Rabbit polyclonal to Cdc37
由来種	Rabbit
アプリケーション	適用あり: WB, IP, ICC/IF
種交差性	交差種: Mouse, Human 交差が予測される動物種: Rat, Rabbit, Horse, Chicken, Guinea pig, Cow, Dog, Pig, Xenopus laevis, Chimpanzee, Rhesus monkey, Gorilla, Orangutan, Xenopus tropicalis
免疫原	Synthetic peptide, corresponding to a region within amino acids 1 -50 of Human Cdc37 (Q16543).
ポジティブ・コントロール	Hela, 293T and mpuse NIH3T3 cell lysates.

製品の特性

製品の状態	Liquid
保存方法	Shipped at 4°C. Upon delivery aliquot and store at -20°C. Avoid freeze / thaw cycles.
バッファー	Preservative: 0.09% Sodium azide Constituent: 99% Tris citrate/phosphate Note: pH 7 to 8.
精製度	Immunogen affinity purified
ポリ/モノ	ポリクローナル
アイソタイプ	IgG

アプリケーション

Our [Abpromise guarantee](#) covers the use of **ab115166** in the following tested applications.

The application notes include recommended starting dilutions; optimal dilutions/concentrations should be determined by the end user.

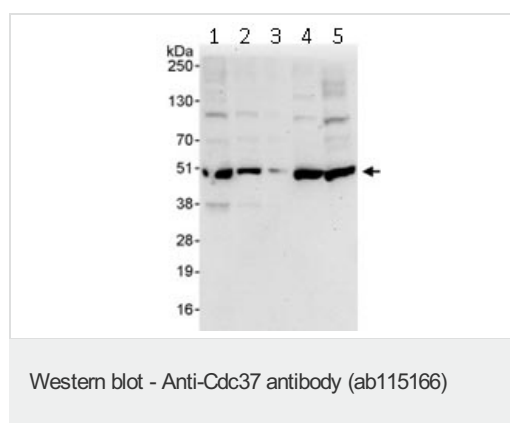
アプリケーション	Abreviews	特記事項
WB		1/1000 - 1/5000. Predicted molecular weight: 44 kDa.

アプリケーション	Abreviews	特記事項
IP		Use at 2-5 µg/mg of lysate.
ICC/IF	★★★★★	Use at an assay dependent concentration.

ターゲット情報

機能	Co-chaperone that binds to numerous kinases and promotes their interaction with the Hsp90 complex, resulting in stabilization and promotion of their activity.
配列類似性	Belongs to the CDC37 family.
翻訳後修飾	Constitutively sumoylated by UBE2I.
細胞内局在	Cytoplasm.

画像



All lanes : Anti-Cdc37 antibody (ab115166)
at 0.4 µg/ml

Lane 1 : HeLa cell lysate at 50 µg

Lane 2 : HeLa cell lysate at 15 µg

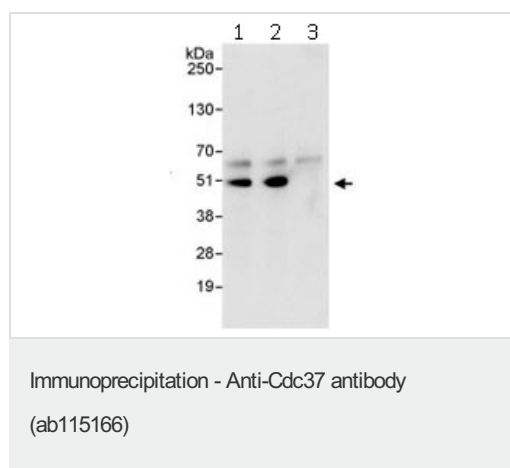
Lane 3 : HeLa cell lysate at 5 µg

Lane 4 : 293T cell lysate at 50 µg

Lane 5 : Mouse NIH3T3 cell lysate at 50 µg

Predicted band size: 44 kDa

Exposure time: 30 seconds



Immunoprecipitation of Cdc37 (3 µg of antibody per mg of HeLa cell lysate; 20% of the IP loaded). Lane 1- Immunoprecipitation with anti-Cdc37 antibody (ab115166); Lane 2- Immunoprecipitation with an anti-Cdc37 antibody that recognizes a downstream epitope ; Lane 3- Immunoprecipitation with IgG control. Anti-Cdc37 antibody (ab115166) used at 1 µg/ml for western blot. Detection: Chemiluminescence with exposure time of 10 sec.

Our Abpromise to you: Quality guaranteed and expert technical support

- Replacement or refund for products not performing as stated on the datasheet
- Valid for 12 months from date of delivery
- Response to your inquiry within 24 hours

- We provide support in Chinese, English, French, German, Japanese and Spanish
- Extensive multi-media technical resources to help you
- We investigate all quality concerns to ensure our products perform to the highest standards

If the product does not perform as described on this datasheet, we will offer a refund or replacement. For full details of the Abpromise, please visit <https://www.abcam.co.jp/abpromise> or contact our technical team.

Terms and conditions

- Guarantee only valid for products bought direct from Abcam or one of our authorized distributors