

Product datasheet

Anti-Cathepsin L/MEP antibody ab95154

画像数 1

製品の概要

製品名	Anti-Cathepsin L/MEP antibody
製品の詳細	Rabbit polyclonal to Cathepsin L/MEP
由来種	Rabbit
アプリケーション	適用あり: WB
種交差性	交差種: Human
免疫原	Synthetic peptide corresponding to Human Cathepsin L/MEP aa 200-300 conjugated to keyhole limpet haemocyanin. (Peptide available as <a href="#">ab109646</a> )
ポジティブ・コントロール	This antibody gave a positive signal in both HeLa and HCT116 whole cell lysates.

製品の特性

製品の状態	Liquid
保存方法	Shipped at 4°C. Store at +4°C short term (1-2 weeks). Upon delivery aliquot. Store at -20°C or -80°C. Avoid freeze / thaw cycle.
バッファー	Preservative: 0.02% Sodium Azide Constituents: 1% BSA, PBS, pH 7.4
精製度	Immunogen affinity purified
ポリ/モノ	ポリクローナル
アイソタイプ	IgG

アプリケーション

Our [Abpromise guarantee](#) covers the use of **ab95154** in the following tested applications.

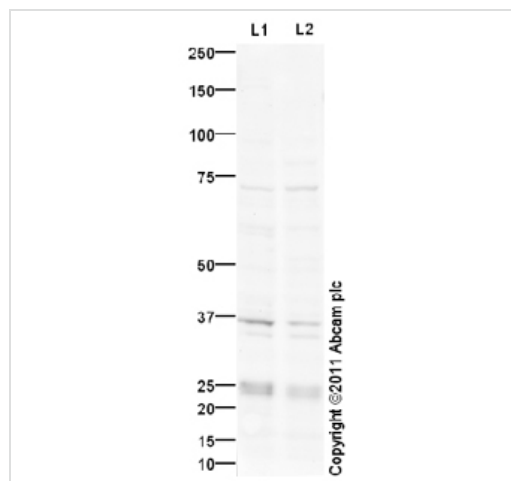
The application notes include recommended starting dilutions; optimal dilutions/concentrations should be determined by the end user.

アプリケーション	Abreviews	特記事項
WB		Use a concentration of 1 µg/ml. Detects a band of approximately 37, 25 kDa (predicted molecular weight: 37 kDa).

## ターゲット情報

機能	Important for the overall degradation of proteins in lysosomes.
配列類似性	Belongs to the peptidase C1 family.
細胞内局在	Lysosome.

## 画像



Western blot - Anti-Cathepsin L/MEP antibody (ab95154)

**All lanes :** Anti-Cathepsin L/MEP antibody (ab95154) at 1 µg/ml

**Lane 1 :** HeLa (Human epithelial carcinoma cell line) Whole Cell Lysate

**Lane 2 :** HCT 116 (Human Colorectal Carcinoma) Whole Cell Lysate

Lysates/proteins at 10 µg per lane.

### Secondary

**All lanes :** Goat Anti-Rabbit IgG H&L (HRP) preadsorbed (ab97080) at 1/3000 dilution

Developed using the ECL technique.

Performed under reducing conditions.

**Predicted band size:** 37 kDa

**Observed band size:** 37 kDa

**Additional bands at:** 25 kDa (possible cleavage fragment), 35 kDa (possible cleavage fragment), 71 kDa. We are unsure as to the identity of these extra bands.

**Exposure time:** 12 minutes

The bands observed at 35 + 25 kDa could potentially be cleaved forms of Cathepsin L/MEP due to the presence of both a 17 amino acid signal peptide and a 96 amino acid activation peptide. This suggests that both the pre and mature form are observed in this blot.

## **Our Abpromise to you: Quality guaranteed and expert technical support**

---

- Replacement or refund for products not performing as stated on the datasheet
- Valid for 12 months from date of delivery
- Response to your inquiry within 24 hours
  
- We provide support in Chinese, English, French, German, Japanese and Spanish
- Extensive multi-media technical resources to help you
- We investigate all quality concerns to ensure our products perform to the highest standards

If the product does not perform as described on this datasheet, we will offer a refund or replacement. For full details of the Abpromise, please visit <https://www.abcam.co.jp/abpromise> or contact our technical team.

## **Terms and conditions**

---

- Guarantee only valid for products bought direct from Abcam or one of our authorized distributors