

## Product datasheet

# Anti-Caspase-6 antibody [EPR4405] ab108335

リコンビナント RabMAb®

★★★★☆ 3 Abreviews 1 References 画像数 2

### 製品の概要

製品名	Anti-Caspase-6 antibody [EPR4405]
製品の詳細	Rabbit monoclonal [EPR4405] to Caspase-6
由来種	Rabbit
特異性	ab108335 detects both the full length and cleaved forms of Caspase-6.
アプリケーション	<b>適用あり:</b> WB, IP, Flow Cyt <b>適用なし:</b> ICC or IHC-P
種交差性	<b>交差種:</b> Mouse, Rat, Human
免疫原	Synthetic peptide within Human Caspase-6 aa 150-250. The exact sequence is proprietary. Database link: <a href="#">P55212</a>
ポジティブ・コントロール	Jurkat cells and cell lysate.
特記事項	A trial size is available to purchase for this antibody.

Our RabMAb® technology is a patented hybridoma-based technology for making rabbit monoclonal antibodies. For details on our patents, please refer to [RabMab® patents](#)

This product is a recombinant rabbit monoclonal antibody.

### 製品の特性

製品の状態	Liquid
保存方法	Shipped at 4°C. Store at +4°C short term (1-2 weeks). Upon delivery aliquot. Store at -20°C. Avoid freeze / thaw cycle.
バッファー	pH: 7.20 Preservative: 0.01% Sodium azide Constituents: 9% PBS, 40% Glycerol, 0.05% BSA, 50% Tissue culture supernatant
精製度	Tissue culture supernatant
ポリ/モノ	モノクローナル
クローン名	EPR4405
アイソタイプ	IgG

## アプリケーション

Our [Abpromise guarantee](#) covers the use of **ab108335** in the following tested applications.

The application notes include recommended starting dilutions; optimal dilutions/concentrations should be determined by the end user.

アプリケーション	Abreviews	特記事項
WB		1/1000 - 1/10000. Predicted molecular weight: 33 kDa.
IP		1/10 - 1/100.
Flow Cyt	★★★★☆	1/10 - 1/100. <a href="#">ab172730</a> - Rabbit monoclonal IgG, is suitable for use as an isotype control with this antibody.

## 追加情報

Is unsuitable for ICC or IHC-P.

## ターゲット情報

### 機能

Involved in the activation cascade of caspases responsible for apoptosis execution. Cleaves poly(ADP-ribose) polymerase in vitro, as well as lamins. Overexpression promotes programmed cell death.

### 配列類似性

Belongs to the peptidase C14A family.

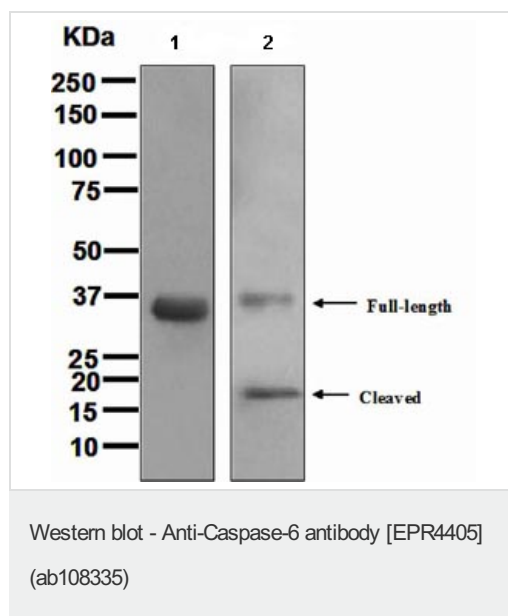
### 翻訳後修飾

Cleavages by caspase-3, caspase-8 or -10 generate the two active subunits.

### 細胞内局在

Cytoplasm.

## 画像



**All lanes :** Anti-Caspase-6 antibody

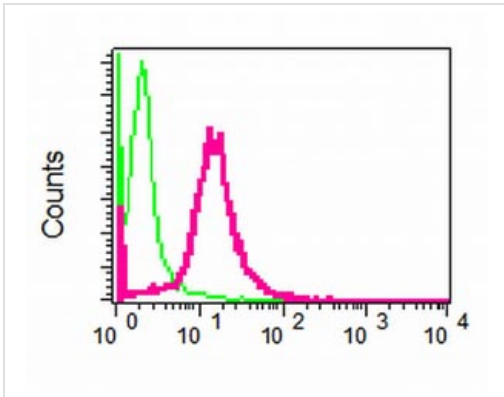
[EPR4405] (ab108335) at 1/1000 dilution

**Lane 1 :** Jurkat cell lysate

**Lane 2 :** Jurkat + staurosporine cell lysate

Lysates/proteins at 10 µg per lane.

**Predicted band size:** 33 kDa



ab108335, at 1:10 dilution, staining Caspase-6 in permeabilized Jurkat cells by Flow cytometry (shown in red). Rabbit IgG shown in green (negative).

Flow Cytometry - Anti-Caspase-6 antibody  
[EPR4405] (ab108335)

**Please note:** All products are "FOR RESEARCH USE ONLY AND ARE NOT INTENDED FOR DIAGNOSTIC OR THERAPEUTIC USE"

### Our Abpromise to you: Quality guaranteed and expert technical support

- Replacement or refund for products not performing as stated on the datasheet
- Valid for 12 months from date of delivery
- Response to your inquiry within 24 hours
- We provide support in Chinese, English, French, German, Japanese and Spanish
- Extensive multi-media technical resources to help you
- We investigate all quality concerns to ensure our products perform to the highest standards

If the product does not perform as described on this datasheet, we will offer a refund or replacement. For full details of the Abpromise, please visit <https://www.abcam.co.jp/abpromise> or contact our technical team.

### Terms and conditions

- Guarantee only valid for products bought direct from Abcam or one of our authorized distributors